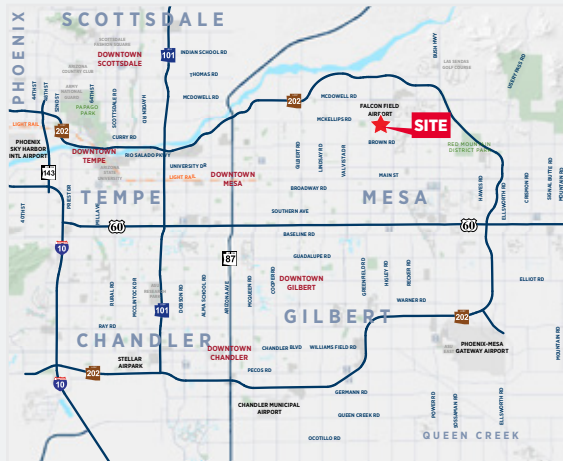


# FOR LEASE - 4725 E IVY ST MESA, ARIZONA



## Property Highlights:

- Space:  $\pm 10,000$  SF
- Office:  $\pm 1,000$  SF
- Storage Lot:  $\pm .75$  Acres
- Zoning: LI (Light Industrial)
- Clear Height:  $\pm 18'$
- Loading: Grade Level  
(1)  $12' \times 14'$
- Power: 800 Amps 120-208
- Sprinklers
- Evaporative Coolers
- Year Built: 2007
- Parcel #: 141-34-302
- Lease Rate: **\$0.88 NNN**



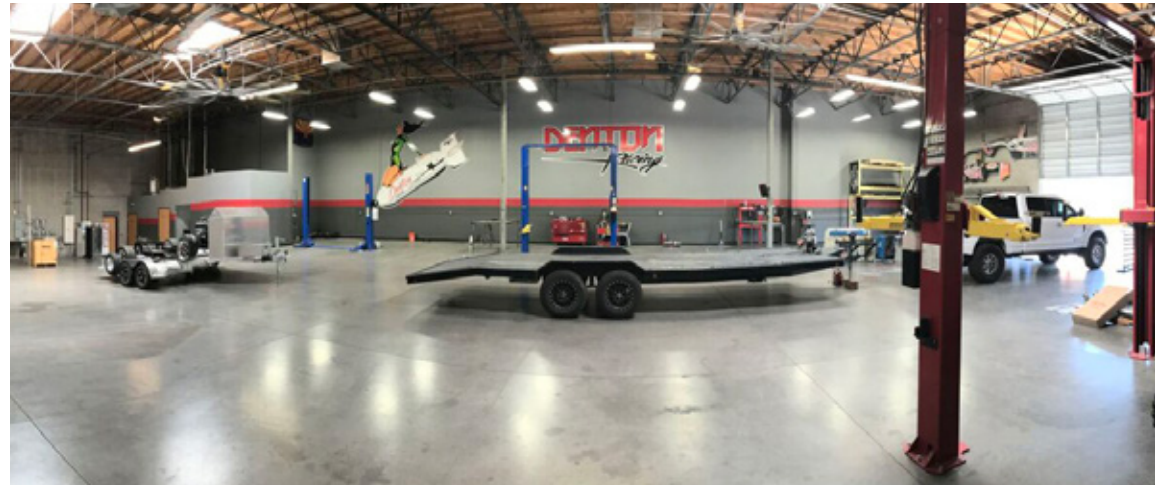
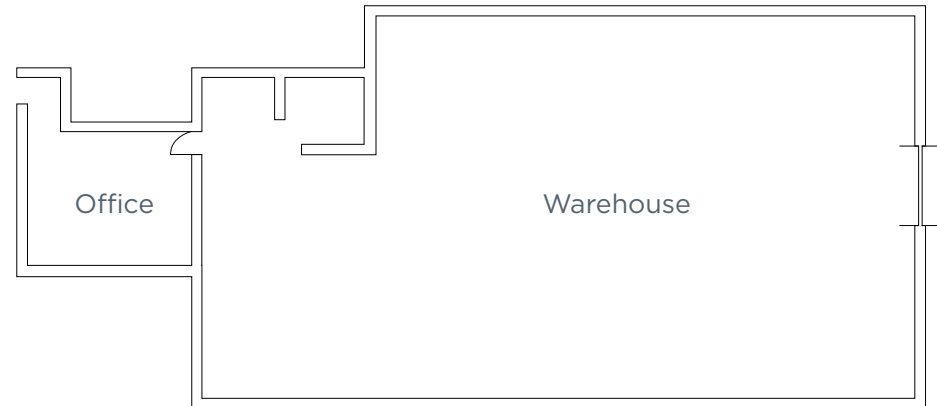
**Kent Hanson**  
Senior Director  
+1 602 224 4433  
kent.hanson@cushwake.com

2555 E. Camelback Rd, Suite 400  
Phoenix, Arizona 85016  
ph: +1 602 954 9000  
fx: +1 602 253 0528  
cushmanwakefield.com



# FOR LEASE - 4725 E IVY ST

## MESA, ARIZONA



**Kent Hanson**  
Senior Director  
+1 602 224 4433  
[kent.hanson@cushwake.com](mailto:kent.hanson@cushwake.com)

2555 E. Camelback Rd, Suite 400  
Phoenix, Arizona 85016  
ph: +1 602 954 9000  
fx: +1 602 253 0528  
[www.cushmanwakefield.com](http://www.cushmanwakefield.com)

