

Washington Place Business Center

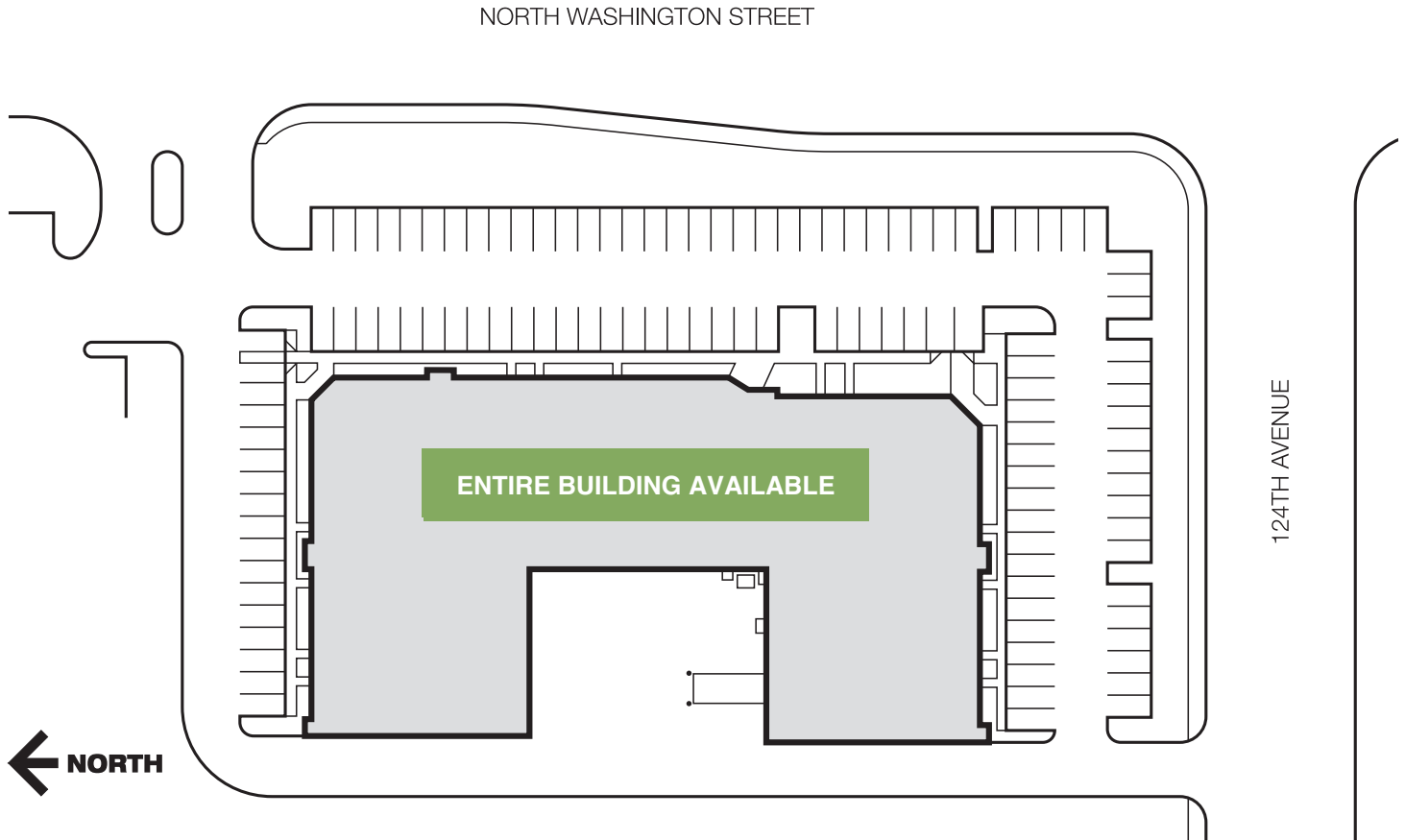
33,700 Sq. Ft. INDUSTRIAL

12421 Washington Street, Thornton, CO 80241

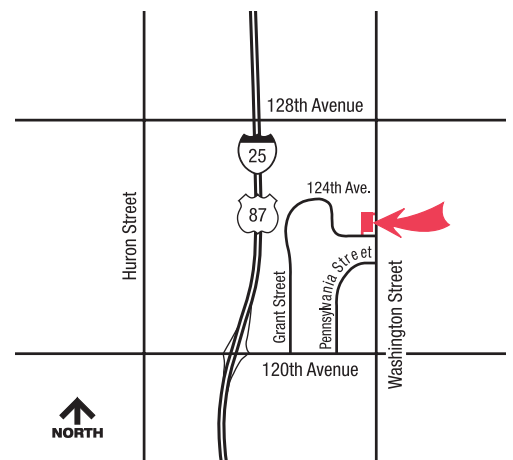


Lease rates & terms
are negotiable.

■ AVAILABLE



- Located in the Washington Square Business Park, a master-planned business and light industrial park
- Attractive single-story building surrounded by mature landscaping
- Excellent access to I-25
- Ideally situated to the majority of north Denver's commercial development
- 15' Clear-span ceiling height
- Air-conditioned production space
- Ample parking
- Grade-level doors & dock-level doors for maximum productivity
- Local ownership
- Responsive, professional management



CONTACT: Ryan Good, Vice President Leasing/Sales 303.223.0496 rgood@etkinjohnson.com

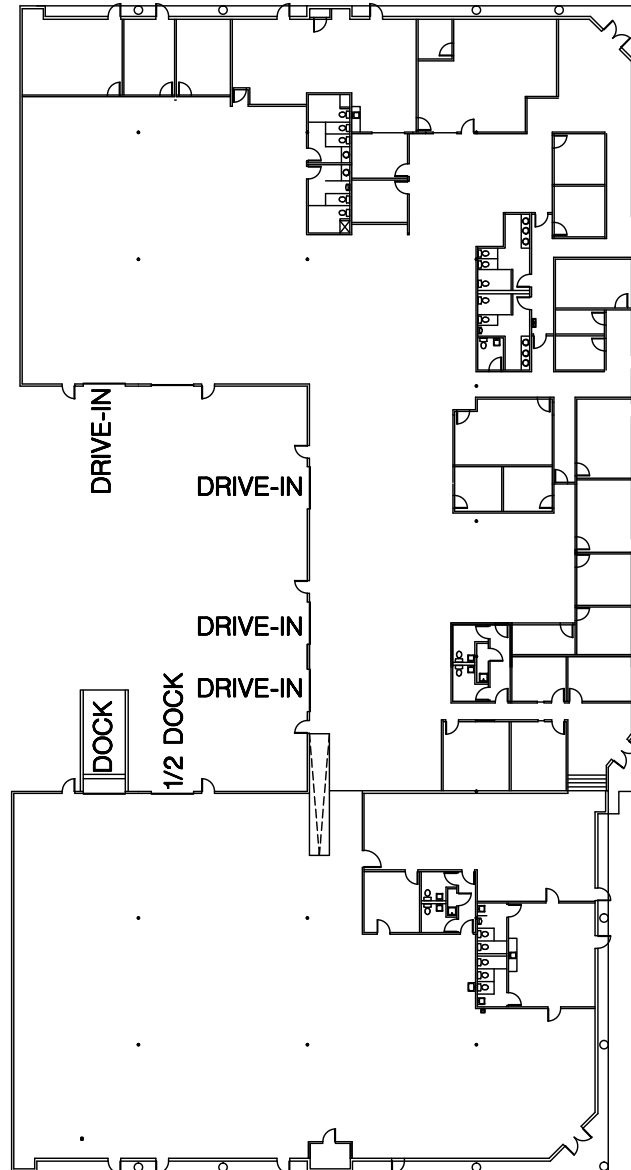
Washington Place Business Center

33,700 Sq. Ft. INDUSTRIAL

12421 Washington Street, Thornton, CO 80241

33,700 SF

Lease rates & terms are negotiable.



ETKIN
JOHNSON
GROUP



- 19,600 SF Warehouse
- 14' Clear
- 1 Dock Door, 10'x10'
- 1 Half Dock Door, 10' x 10'
- 1 Drive-In Door, 10' x 10'
- 3 Drive-In Doors, 10' x 8'
- All Air Conditioned
800A 208 3PH
- Good Access To I-25
- Available Now

CONTACT: Ryan Good, Vice President Leasing/Sales 303.223.0496 rgood@etkinjohnson.com