

For Sale

Vacant Land

±11.3 Acres | \$975,000



Map data ©2020 Imagery ©2020, Maxar Technologies, U.S. Geological Survey, USDA Farm Service Agency

Big Lake Road

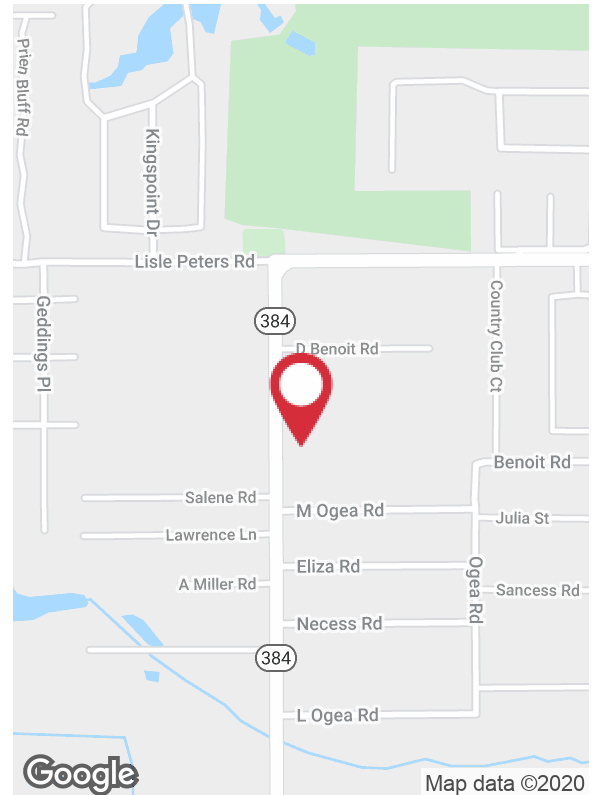
Lake Charles, Louisiana 70605

Property Highlights

- ±11.3 acres available for sale
- Located just south of the intersection of Big Lake Road & Country Club Road
- Residential zoning (R2)
- Flood Zone X
- Additional acreage available from a different owner

Sale Price

\$975,000



Map data ©2020

CALL OR EMAIL FOR MORE INFORMATION

For more information

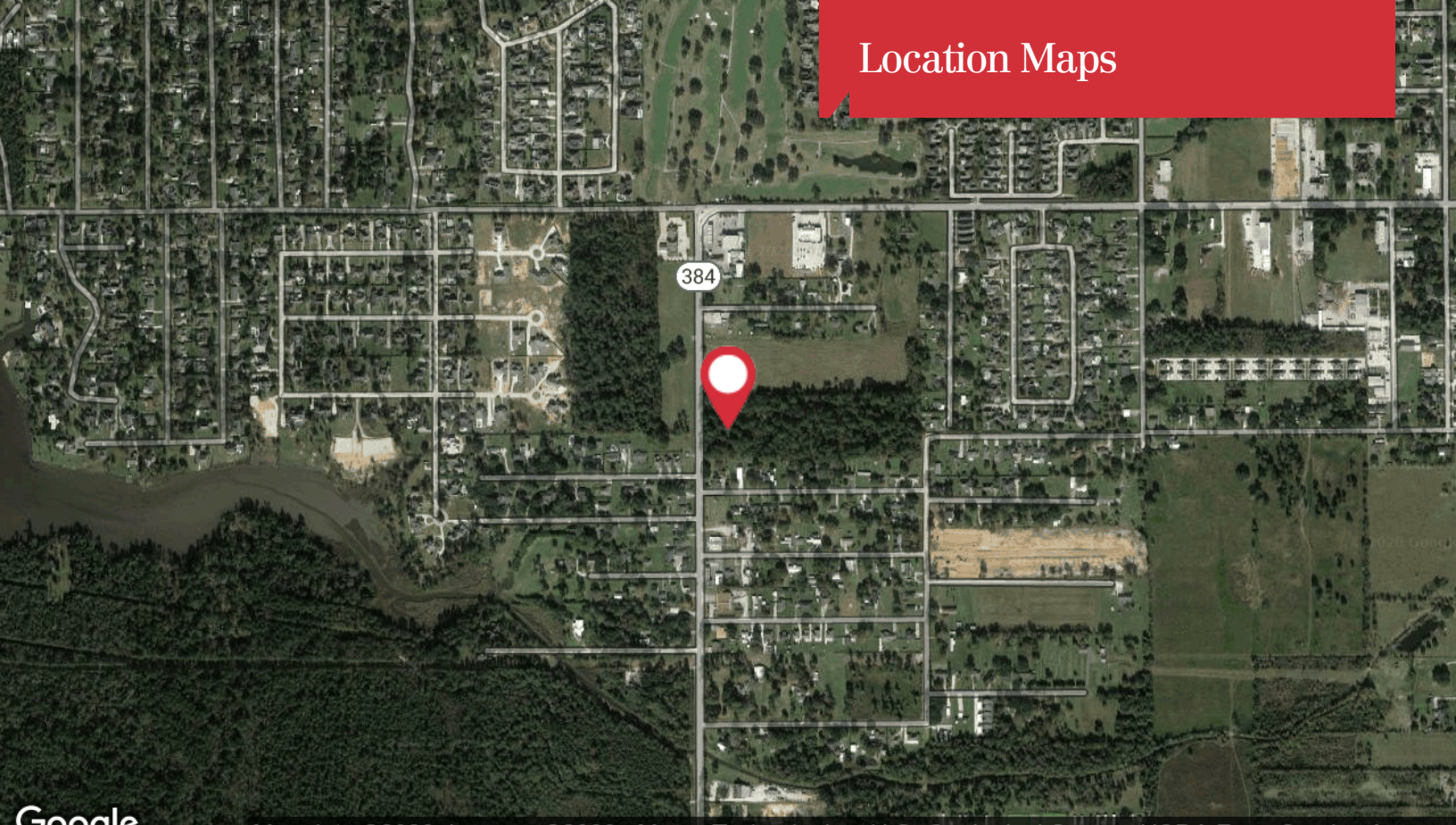
Andrew Vanchiere, CCIM, SIOR

O: 337 310 7333 x214 | C: 337 304 1341
andrewvanchiere@latterblum.com

NO WARRANTY OR REPRESENTATION, EXPRESS OR IMPLIED, IS MADE AS TO THE ACCURACY OF THE INFORMATION CONTAINED HEREIN, AND THE SAME IS SUBMITTED SUBJECT TO ERRORS, OMISSIONS, CHANGE OF PRICE, RENTAL OR OTHER CONDITIONS, PRIOR SALE, LEASE OR FINANCING, OR WITHDRAWAL WITHOUT NOTICE, AND OF ANY SPECIAL LISTING CONDITIONS IMPOSED BY OUR PRINCIPALS NO WARRANTIES OR REPRESENTATIONS ARE MADE AS TO THE CONDITION OF THE PROPERTY OR ANY HAZARDS CONTAINED THEREIN ARE ANY TO BE IMPLIED. LICENSED IN LOUISIANA.

1424 Ryan Street
Lake Charles, LA 70601
337 310 7333 tel
latterblum.com

Location Maps



Google

Map data ©2020 Imagery ©2020 , Maxar Technologies, U.S. Geological Survey, USDA Farm Service Agency



Google

Map data ©2020