

TREK

RETAIL | OFFICE | PROFESSIONAL SPACE

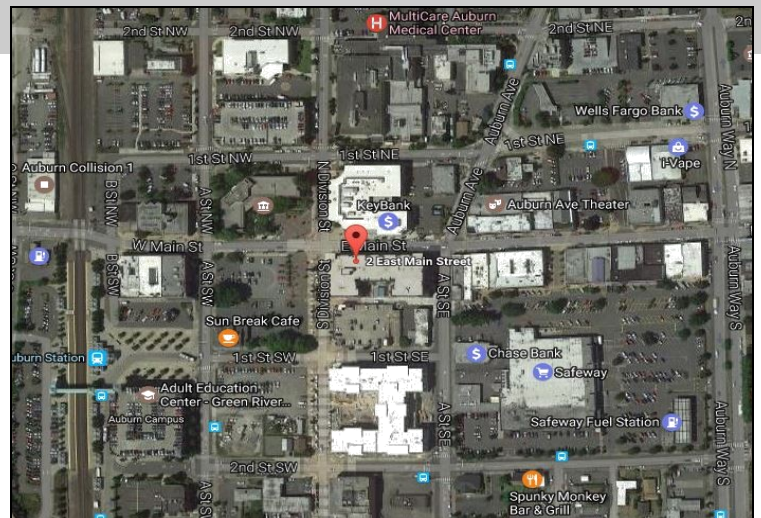
2 East Main Street | Auburn, WA 98002



FEATURES

- Space Available
 - Main Street: 2,400 SF
 - Division Street: 1,800 SF LEASED
 - Division Street: 800 SF LEASED
 - Division Street: 1,400 - 2,400 SF (Divisible)
- 126 residential units above
- Located .07 miles from the Sounder Commuter Rail Station
- Great Visibility
- Convenient access to Downtown Auburn
- Surface Parking Available for these spaces
- Food use okay
- Rate: \$19.00/ PSF, \$5.50 NNN / PSF

Wine Bar/Tap House | Coffee Shop | Insurance Office | Physical Therapy
Bank/Credit Union | Cellular Phone | Pet Groomer | Dryer Cleaner | Mini-Market



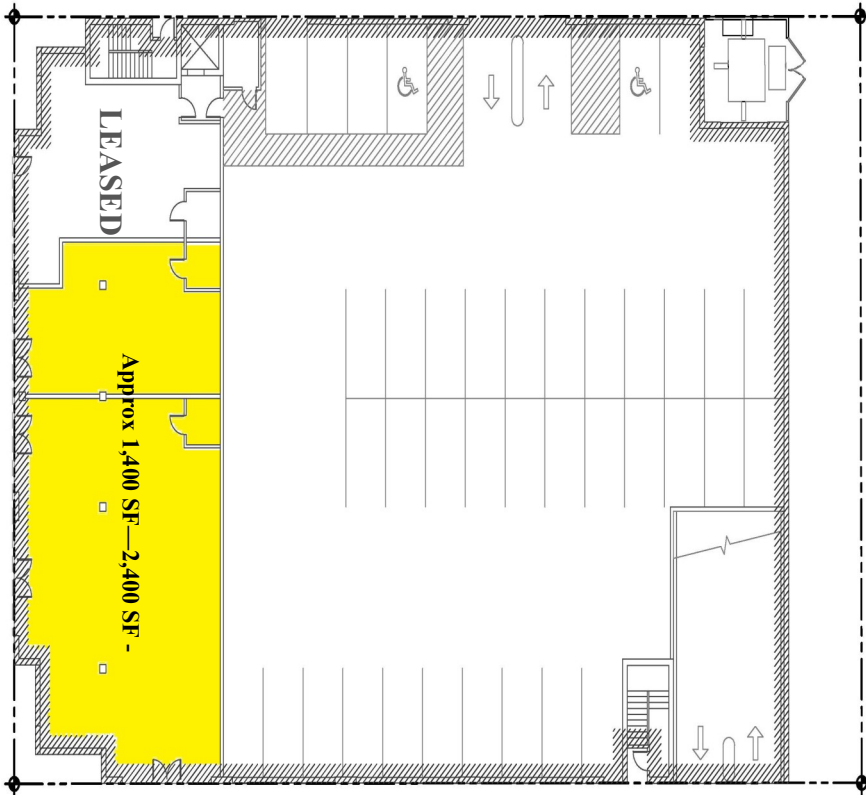
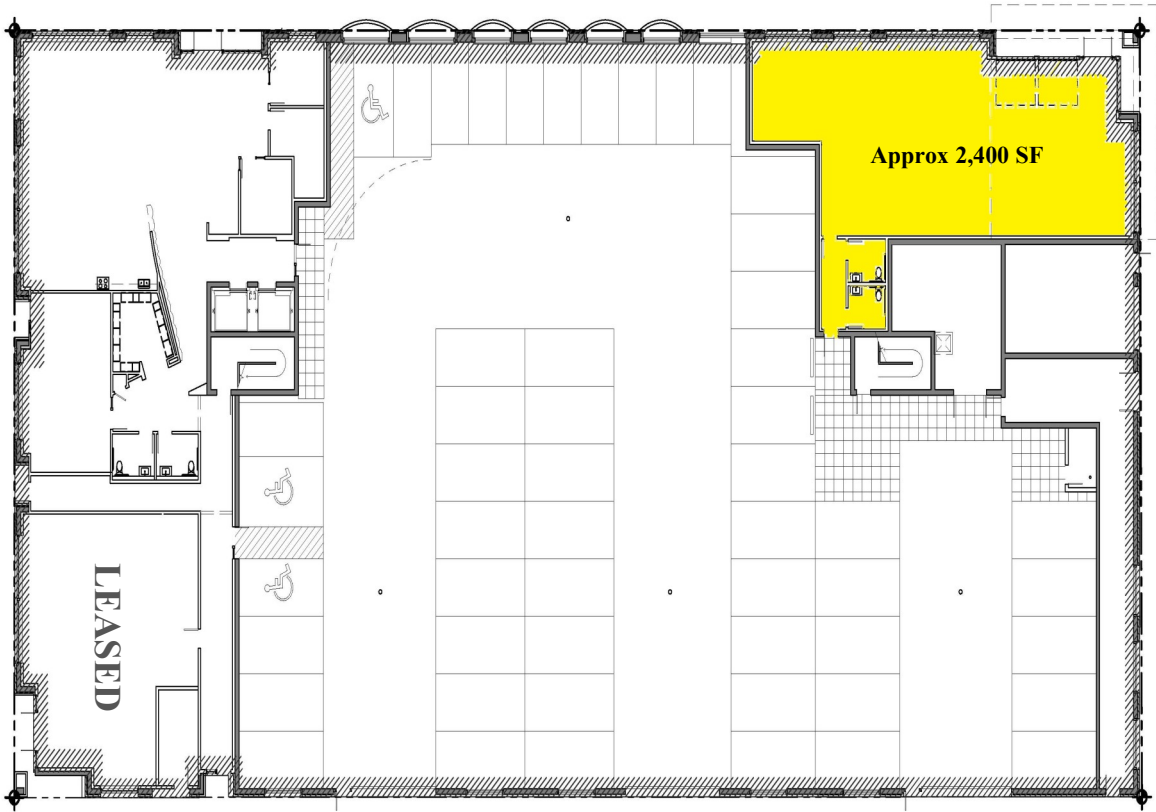
	1 mile	3 mile	5 mile
2015 Population:	10,053	74,906	200,085
2015 Households:	4,202	27,747	73,981
2015 Average HHI:	\$33,867	\$54,733	\$56,956
2015 Daytime Population:	25,057	115,977	289,839

Eric Turbak
253-293-7001
eric@turbak.com

Kristina Bailey
253-293-7003
kristina@turbak.com

The information contained here in has been obtained from sources deemed reliable but is not guaranteed

East Main Street



South Division Street



TREK
 RETAIL | OFFICE | FLEX/PROFESSIONAL SPACE
 2 East Main Street | Auburn, WA 98002

DEMOGRAPHICS			
Radius	1 Mile	3 Mile	5 Mile
Population:			
2020 Projection	10,920	81,192	217,370
2015 Estimate	10,053	74,906	200,085
2010 Census	9,240	69,587	182,414
Growth 2015-2020	8.62%	8.39%	8.64%
Growth 2010-2015	8.80%	7.64%	9.69%
2015 Population Hispanic Origin	1,500	10,802	29,492
2015 Population by Race:			
White	7,809	56,759	140,142
Black	630	3,971	16,078
Am. Indian & Alaskan	298	1,968	3,908
Asian	487	6,879	24,663
Hawaiian & Pacific Island	285	1,461	4,026
Other	545	3,867	11,268
Households:			
2020 Projection	4,578	30,165	80,589
2015 Estimate	4,202	27,747	73,981
2010 Census	3,819	25,498	66,773
Growth 2015 - 2020	8.95%	8.71%	8.93%
Growth 2010 - 2015	10.03%	8.82%	10.79%
Owner Occupied	1,596	16,051	42,182
Renter Occupied	2,607	11,696	31,799
2015 Avg Household Income	\$48,649	\$69,060	\$72,995
2015 Med Household Income	\$33,867	\$54,733	\$56,956
2015 Households by Household Inc:			
<\$25,000	1,501	5,799	14,935
\$25,000 - \$50,000	1,287	6,973	17,463
\$50,000 - \$75,000	602	5,256	14,263
\$75,000 - \$100,000	349	3,958	9,965
\$100,000 - \$125,000	254	2,511	6,964
\$125,000 - \$150,000	101	1,219	3,852
\$150,000 - \$200,000	69	1,308	4,085
\$200,000+	41	722	2,455

Eric Turbak
 253-293-7001
 eric@turbak.com

Kristina Bailey
 253-293-7003
 kristina@turbak.com

The information contained here in has been obtained from sources deemed reliable but is not guaranteed