

# STARRETT LEHIGH

30,325 RSF SUBLEASE AVAILABLE

 Newmark  
Knight Frank





# STARRETT LEHIGH

## FLOORS / AREA

Partial 9th / **30,325 RSF**

## POSSESSION

Arranged

## TERMS

Through December 31, 2033

## COMMENTS

- Built, kitchen and studio space
- Individual, working Commercial kitchens
- Individual open areas, suitable for open bullpen workspace or photography use
- Adequate storage and work rooms
- Fantastic natural light and River Views
- **Building amenities:**
  - Fitness center on site
  - Bicycle Storage: Racks can accommodate up to 300 Bikes
  - Shuttle Bus service: Service to and from Penn Station, Grand Central and Port Authority, first stop on 23rd and 8th Ave, morning / evenings only

### JARAD WINTER

212.372.2361

jarad.winter@ngkf.com

### JD COHEN

212.850.5476

jcohen@ngkf.com

### WILLIAM COHEN

212.372.2233

wcohen@ngkf.com

### BRIAN COHEN

212.372.2178

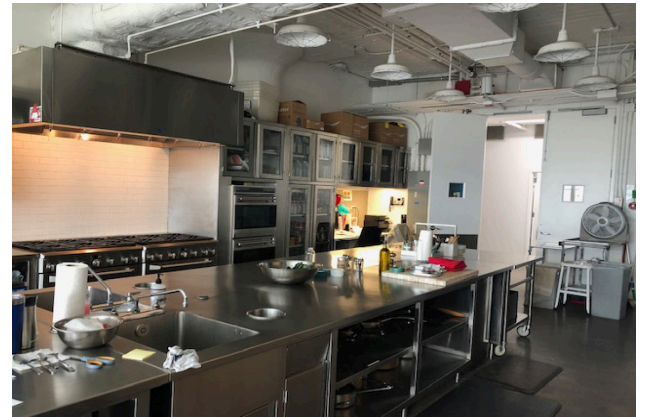
bcohen@ngkf.com

EXISTING SPACE

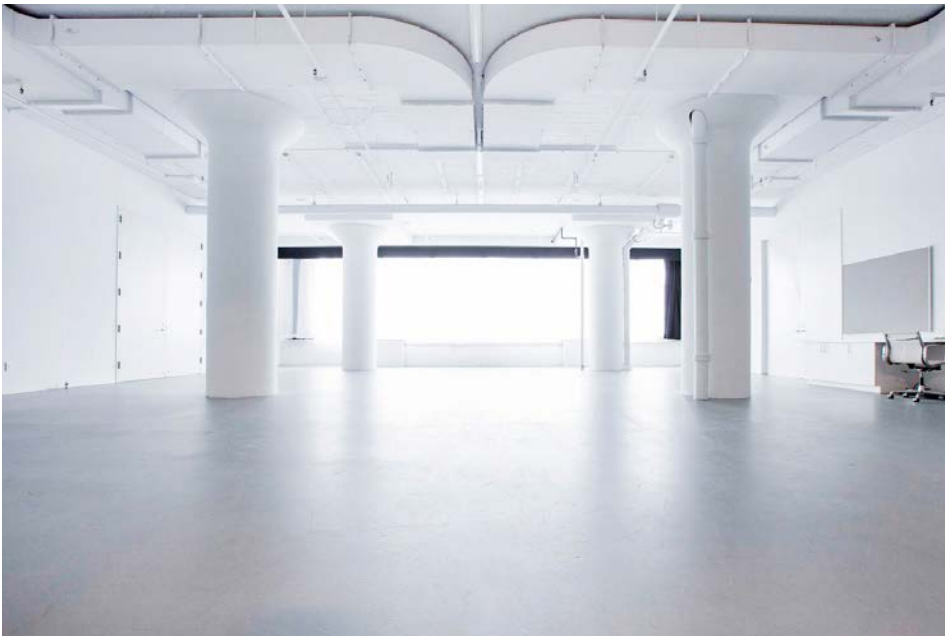
STARRETT  LEHIGH



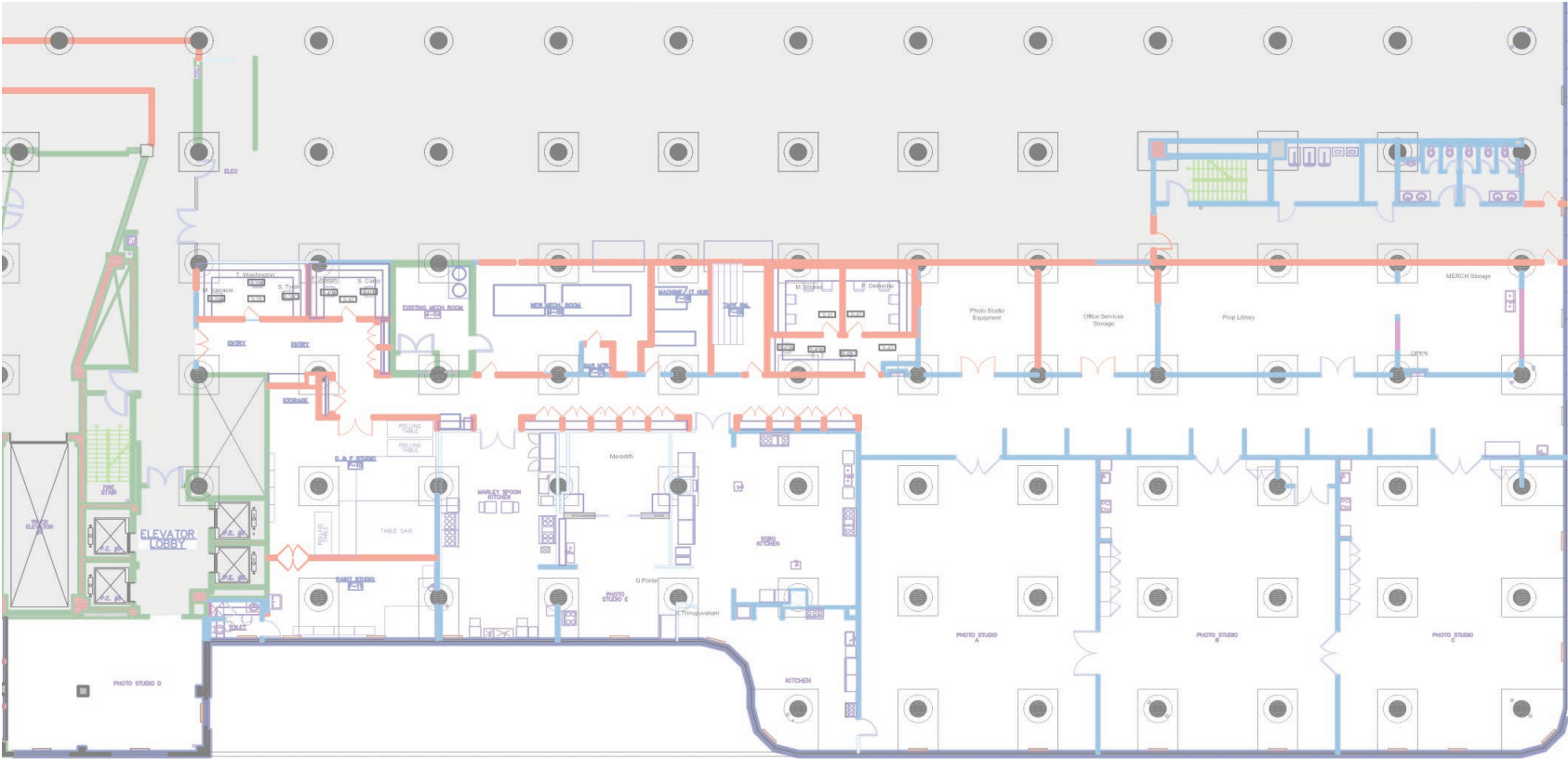
# EXISTING SPACE



EXISTING SPACE



# FLOOR PLAN



# STARRETT LEHIGH

30,325 RSF SUBLEASE AVAILABLE

---

JARAD WINTER  
212.372.2361  
jarad.winter@ngkf.com

JD COHEN  
212.850.5476  
jcohen@ngkf.com

WILLIAM COHEN  
212.372.2233  
wcohen@ngkf.com

BRIAN COHEN  
212.372.2178  
bcohen@ngkf.com

