

McDowell Mountain Business Park | Office/Flex Space

FOR LEASE

±2,415 SQ. FT.

16674 N 91st Street | Suite 102 | Scottsdale, Arizona 85260

100% HVAC

MUSIC & ACTING

Lobby with built-in reception desk | Four downstairs offices | Flex space | Two restrooms
Mezzanine with three offices, one restroom, kitchenette

For further property information or to schedule a tour please contact:



John Quatrini
Associate Broker
C 602.859.0506
O 480.443.3992

john@shellcommercial.com



Suzanne Enright
Senior Associate
C 602.471.2981
O 480.443.3992

suzanne@shellcommercial.com

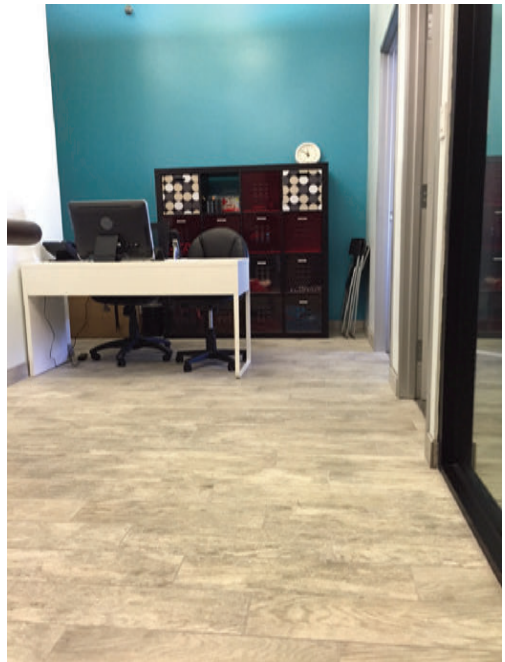


480.443.3992 shellcommercial.com



16410 N 91st Street | Suite 112 | Scottsdale, Arizona 85260

Warm finishes with **Contemporary Appeal!**



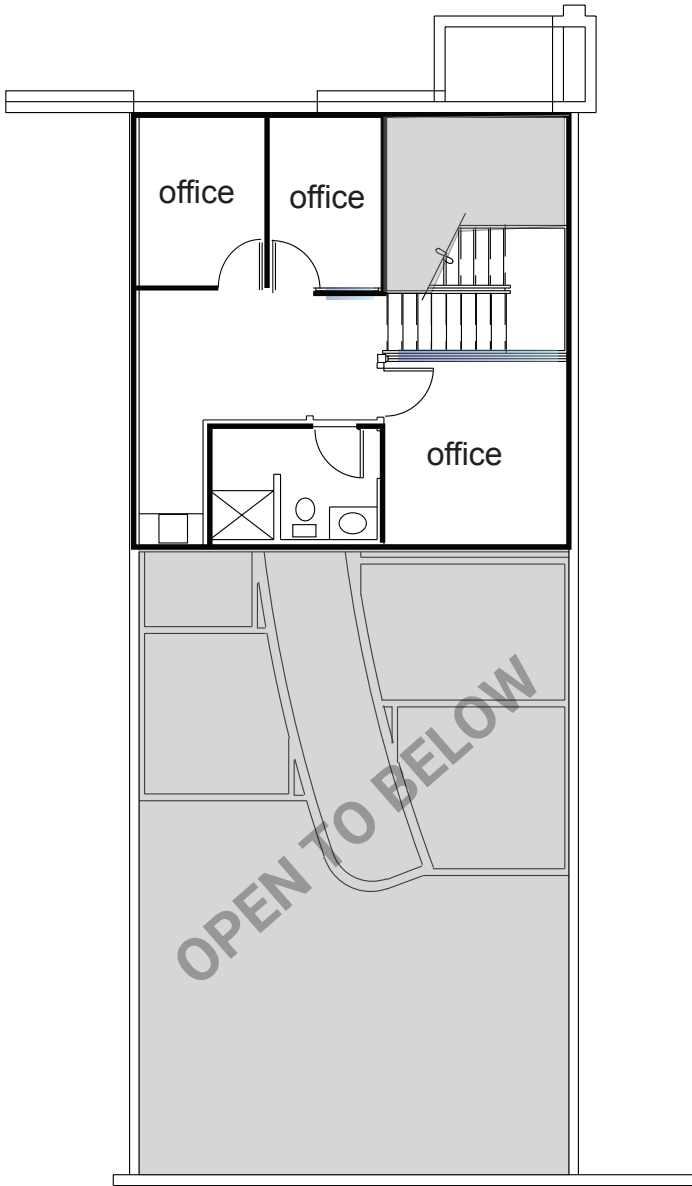
480.443.3992 shellcommercial.com



16410 N 91st Street | Suite 112 | Scottsdale, Arizona 85260

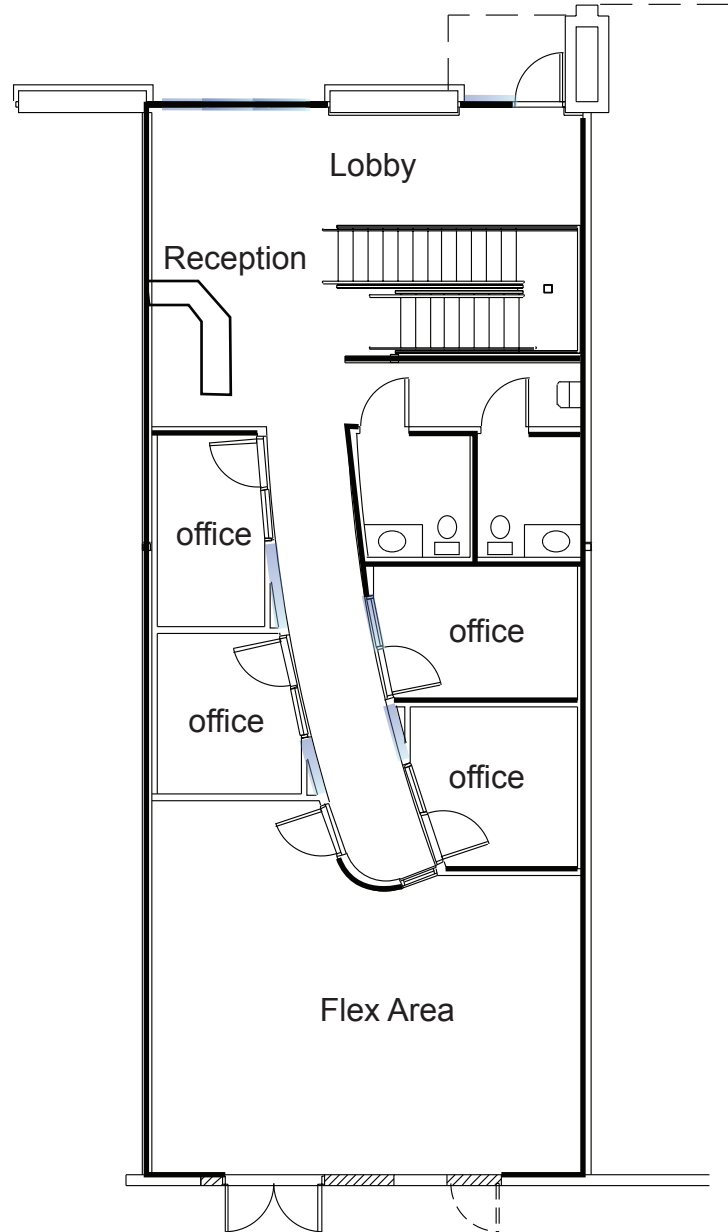
The above is subject to prior sales and leasing. This information has been secured from sources we believe to be reliable, but we make no representation or warranties, expressed or implied as to the accuracy of this information.

16674 N 91st Street
Suite 102
±2,415 SF



SECOND FLOOR

WINDOW



FIRST FLOOR

NOT TO SCALE

All information furnished regarding property for sale, rental or financing is from sources deemed reliable, but no warranty or representation is made to the accuracy thereof and same is submitted to errors, omissions, change of price, rental or other conditions, prior to sale, lease or financing or withdrawal without notice. No liability of any kind is to be imposed on the broker herein. This information has been secured from sources deemed reliable, however, we make no warranties as to its accuracy.

