



2664 Route 206

Springfield (Burlington County), New Jersey

Size

- +/- 2.70 Acres

Asking Price

- \$1.5 MM

Taxes

- \$8,506 (2016)

Demographics

Radius	Population	Median HH Income	Average Age
3 Mile	12,044	\$79,138	40.8
5 Mile	46,868	\$83,200	40.9
7 Mile	94,330	\$87,843	41.1

Land for Sale - Contact

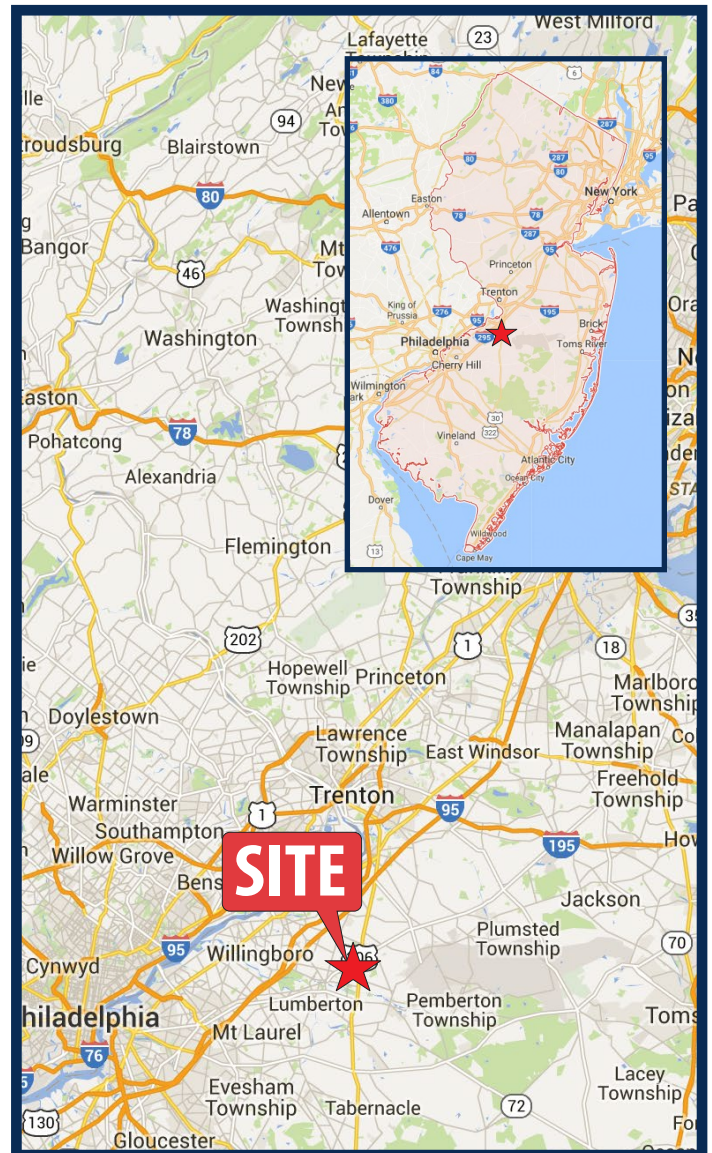
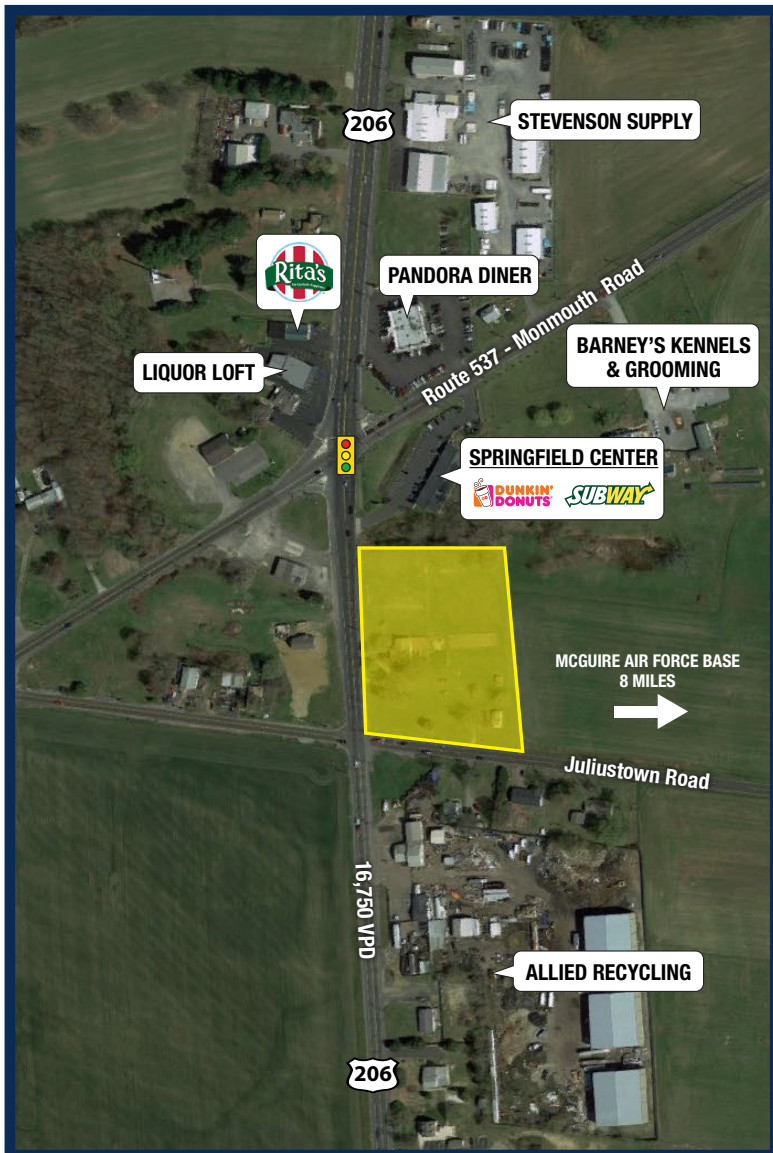
Jason Pierson
Ph. 732-707-6900 x1
jason@piersonre.com

PIERSON
COMMERCIAL REAL ESTATE

2664 Route 206

Springfield (Burlington County), New Jersey

- Prime land for redevelopment along growing Route 206 corridor
- DOT expanding Route 206 with additional lanes and improved intersection at Juliustown Road
- Curb cuts and utilities in place
- Traffic counts of 16,750 VPD
- Juliustown Road is a major thoroughway to McGuire Air Force Base



Land for Sale - Contact

Jason Pierson
Ph. 732-707-6900 x1
jason@piersonre.com

PIERSON
COMMERCIAL REAL ESTATE