

SURVEY FOR THE ESTATE OF MINNIE M. BURNHAM LOCATED IN LAND LOT 2, OF THE 11th DISTRICT, OF CARROLL COUNTY, GEORGIA

CONTAINING 72.32 ACRES

FILED 00 DEC 15 11 9 52

Table with columns COURSE, BEARING, DISTANCE. Rows 1-5 with bearings like S 03°58'08"W and distances like 232.41'.

RAD: 2788.33' TAN: 86.12' LEN: 176.18' DELTA: 3°38'58"

RAD: 2786.33' TAN: 23.60' LEN: 47.19' DELTA: 0°58'39"

RAD: 2753.21' TAN: 106.93' LEN: 213.75' DELTA: 4°28'54"

RAD: 2753.21' TAN: 145.69' LEN: 280.91' DELTA: 6°03'14"

RAD: 842.20' TAN: 98.34' LEN: 195.18' DELTA: 17°24'42"

RAD: 1975.60' TAN: 42.85' LEN: 85.69' DELTA: 2°29'06"

RAD: 1844.36' TAN: 51.13' LEN: 102.22' DELTA: 3°10'32"

RAD: 513.97' TAN: 78.23' LEN: 155.28' DELTA: 17°24'33"

RAD: 1080.38' TAN: 48.58' LEN: 97.10' DELTA: 5°08'59"

RAD: 1080.38' TAN: 144.95' LEN: 288.17' DELTA: 15°16'57"

RAD: 2889.74' TAN: 152.75' LEN: 305.22' DELTA: 5°53'19"

RAD: 2963.18' TAN: 85.65' LEN: 171.25' DELTA: 3°18'41"

RAD: 2963.18' TAN: 85.65' LEN: 171.25' DELTA: 3°18'41"

RAD: 2963.18' TAN: 85.65' LEN: 171.25' DELTA: 3°18'41"

RAD: 2963.18' TAN: 85.65' LEN: 171.25' DELTA: 3°18'41"

RAD: 2963.18' TAN: 85.65' LEN: 171.25' DELTA: 3°18'41"

RAD: 2963.18' TAN: 85.65' LEN: 171.25' DELTA: 3°18'41"

RAD: 2963.18' TAN: 85.65' LEN: 171.25' DELTA: 3°18'41"

RAD: 2963.18' TAN: 85.65' LEN: 171.25' DELTA: 3°18'41"

RAD: 2963.18' TAN: 85.65' LEN: 171.25' DELTA: 3°18'41"

RAD: 2963.18' TAN: 85.65' LEN: 171.25' DELTA: 3°18'41"

RAD: 2963.18' TAN: 85.65' LEN: 171.25' DELTA: 3°18'41"

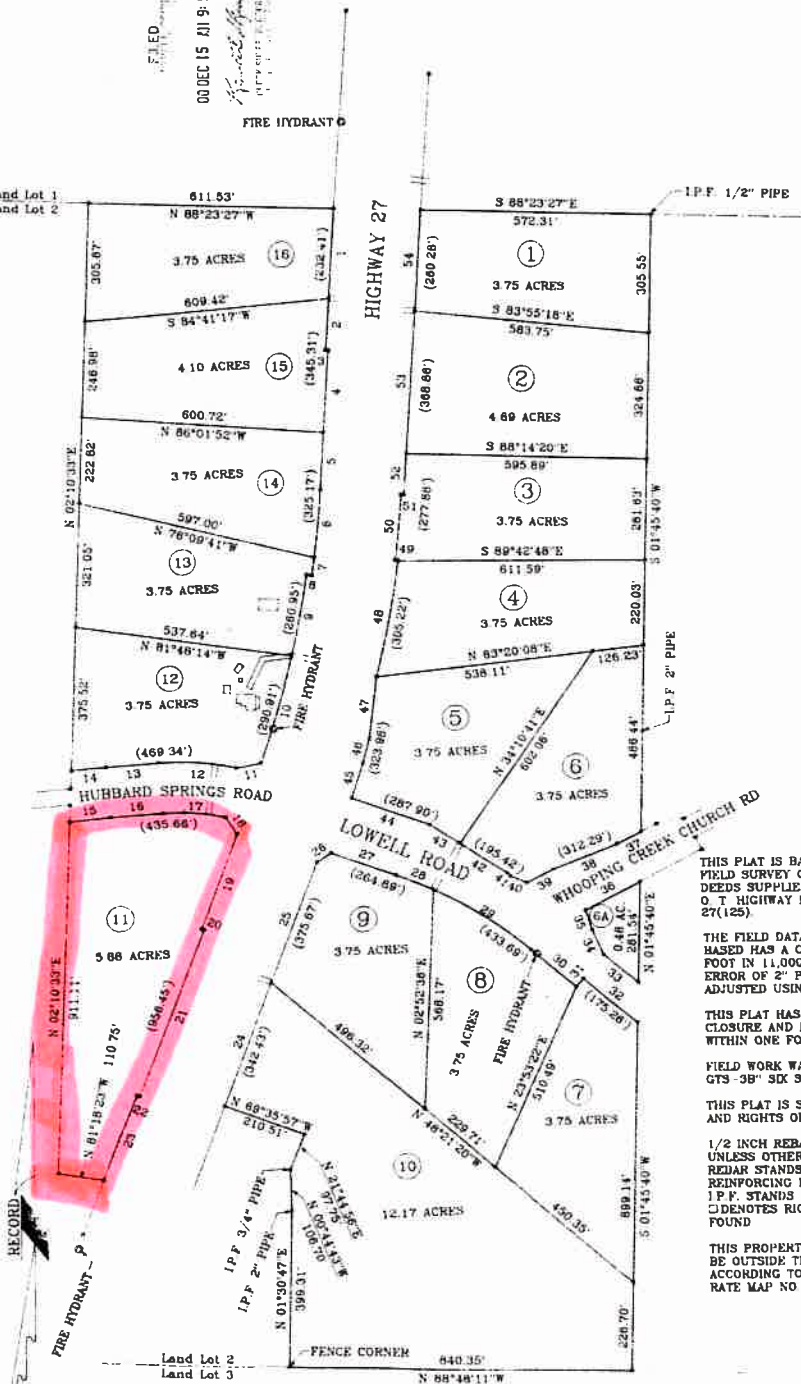
RAD: 2963.18' TAN: 85.65' LEN: 171.25' DELTA: 3°18'41"

RAD: 2963.18' TAN: 85.65' LEN: 171.25' DELTA: 3°18'41"

RAD: 2963.18' TAN: 85.65' LEN: 171.25' DELTA: 3°18'41"

RAD: 2963.18' TAN: 85.65' LEN: 171.25' DELTA: 3°18'41"

RAD: 2963.18' TAN: 85.65' LEN: 171.25' DELTA: 3°18'41"



THIS PLAT IS BASED ON INFORMATION FROM FIELD SURVEY COMPLETED ON 11/17/00; DEEDS SUPPLIED BY CLIENT; AND GEORGIA D O T HIGHWAY PLANS - PROJECT # EDS - 27(125).

THE FIELD DATA UPON WHICH THIS PLAT IS BASED HAS A CLOSURE PRECISION OF ONE FOOT IN 11,000+ FEET, AND AN ANGULAR ERROR OF 2" PER ANGLE POINT, AND HAS ADJUSTED USING THE COMPASS RULE.

THIS PLAT HAS BEEN CALCULATED FOR CLOSURE AND FOUND TO BE ACCURATE WITHIN ONE FOOT IN 20,000+ FEET

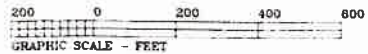
FIELD WORK WAS DONE USING A "TOPCON GTS-38" SIX SECOND, TOTAL STATION

THIS PLAT IS SUBJECT TO ALL EASEMENTS AND RIGHTS OF WAY

1/2 INCH REBAR SET AT ALL CORNERS UNLESS OTHERWISE SHOWN. REBAR STANDS FOR CONCRETE REINFORCING ROD. I.P.F. STANDS FOR IRON PIN FOUND. C DENOTES RIGHT OF WAY MONUMENT FOUND

THIS PROPERTY HAS BEEN DETERMINED TO BE OUTSIDE THE 500 YEAR FLOOD PLAIN, ACCORDING TO F.E.M.A FLOOD INSURANCE RATE MAP NO 130484 0175 B

SCALE : 1 INCH = 200 FEET



DATE : NOVEMBER 20, 2000

CANNON SURVEYING 100 SANTA FE TRAIL DALTON, GA 30721 PHONE 706 259-5152



RICHARD W. CANNON GEORGIA R.L.S. #2446 J - 0030 A