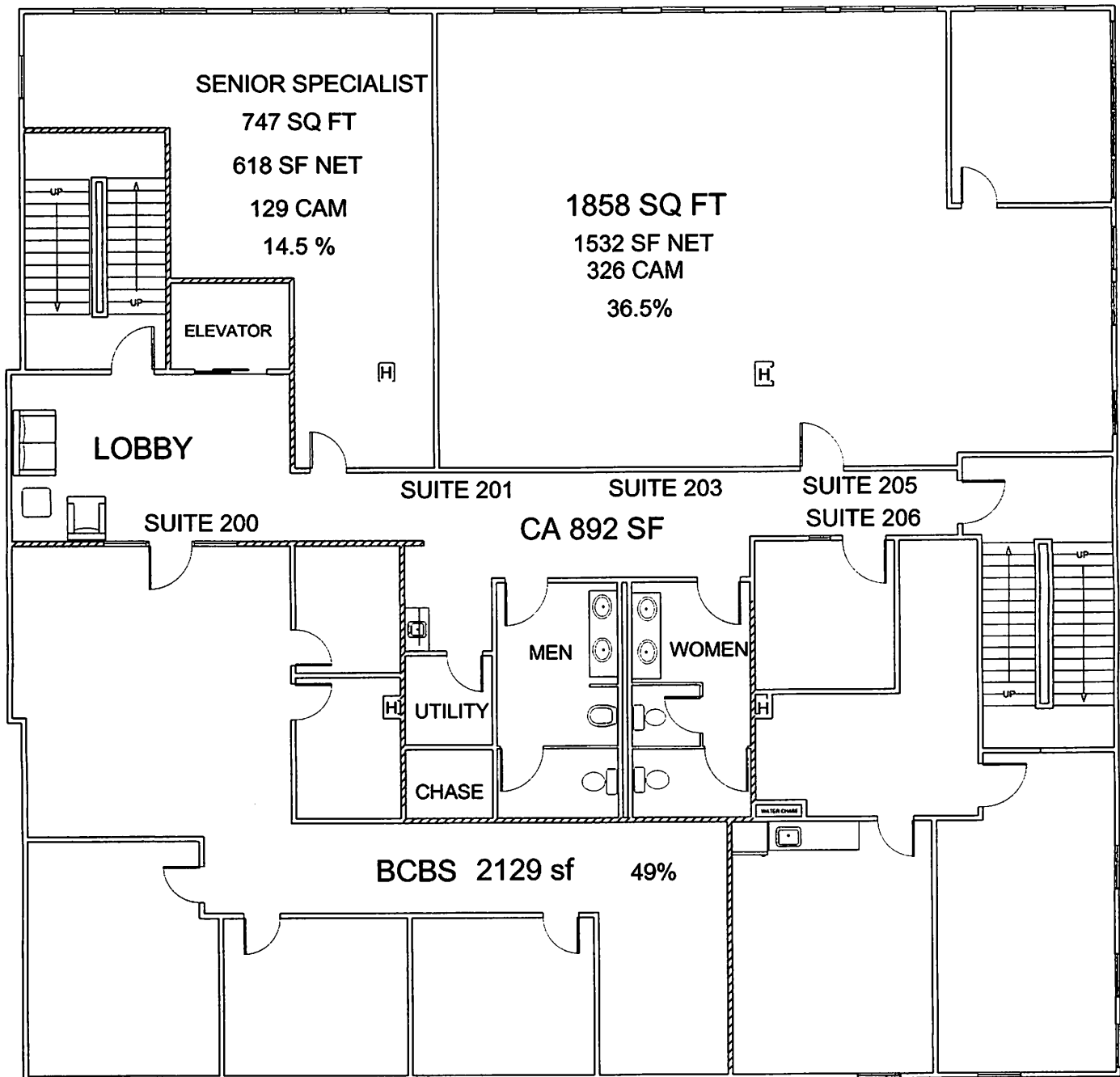


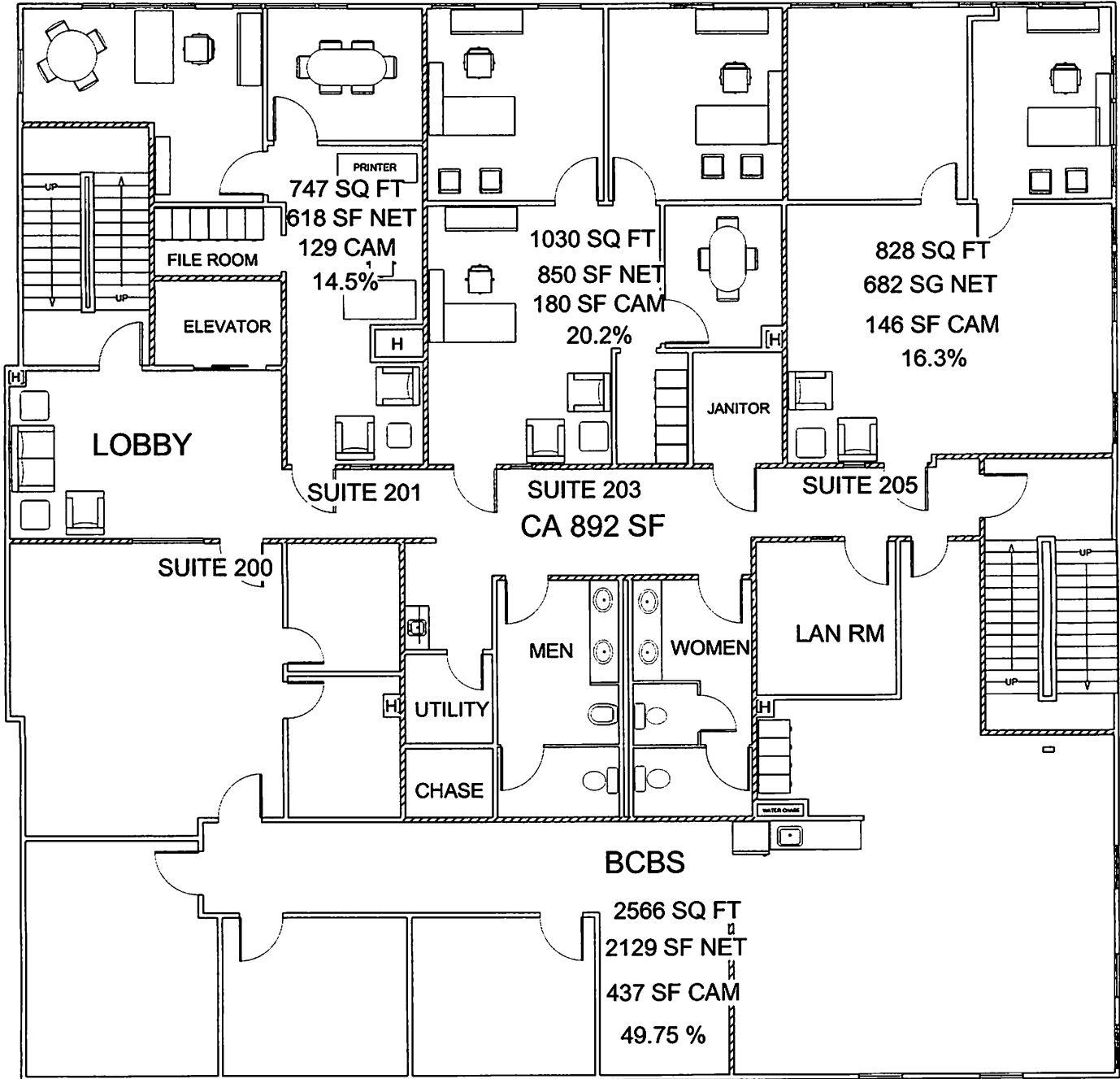
UMB BANK BLDG



2ND FLOOR

FLOOR PLATE(76' X 76')	5776 SF	--
NET RENTABLE	4279 SF	
FLOOR COM AREA	892 SF	
STAIRWELLS & ELEVATOR	605 SF	

UMB BANK BLDG



2ND FLOOR

FLOOR PLATE(76' X 76')	5776 SF	--
NET RENTABLE	4279 SF	
FLOOR COM AREA	892 SF	
STAIRWELLS & ELEVATOR	605 SF	