

The Greene on Douglas

Office Space for Lease



1110 Douglas Avenue,
Altamonte Springs, Florida 32714

Property Details:

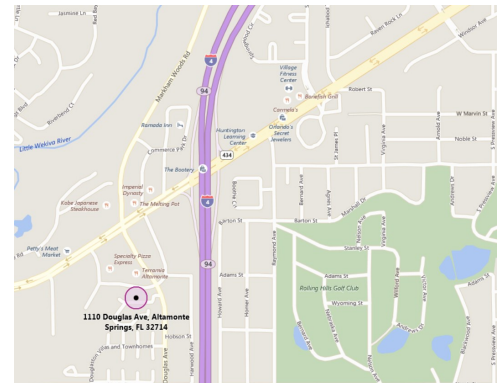
Total Space Available	5,264 SF
Rental Rate	TBD
Min. Divisible	1,003 SF
Max. Contiguous	2,403 SF
Property Type	Office
Zoned	MCO-1
Building Class	B
Year Built	1986

Spaces:

Suite	Space Available	Min Divisible	Max Contiguous	Price	Date Available	Description
1018	1,858 SF	1,858 SF	1,858 SF	TBD	6/1/18	Office
2000	2,403 SF	2,403 SF	2,403 SF	TBD	6/1/18	Office
2050	1,003 SF	1,003 SF	1,003 SF	TBD	Now	Office

Location Description:

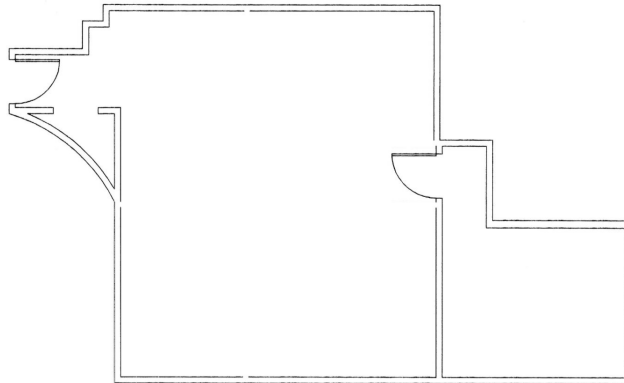
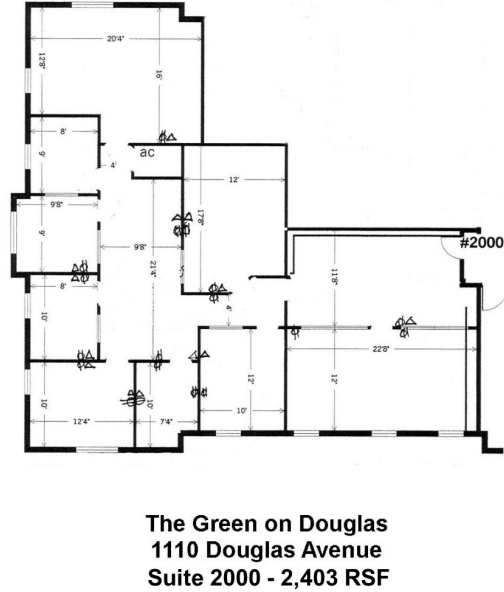
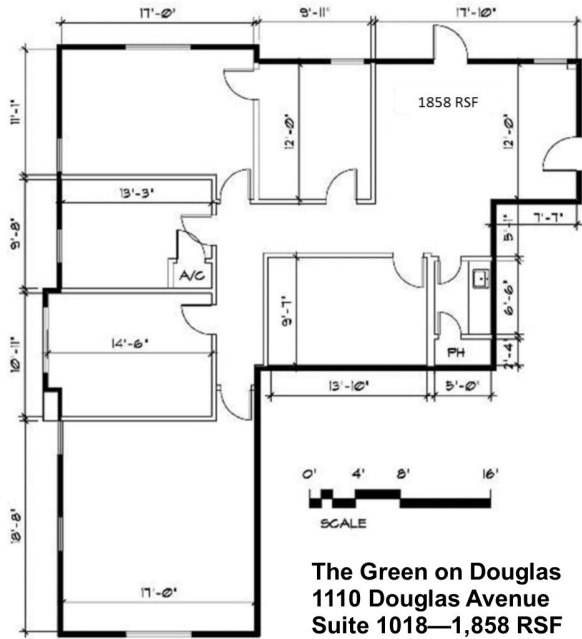
- Beautiful 3-story brick building
- Tiled lobby
- Exterior staircase with patio entrance
- Ample parking
- Convenient access to Highway 434, Interstate 4, and Highway 436



Commercial Sales & Leasing | Property Management | Project Development | Acquisitions & Dispositions | Construction Services

Southeastern Realty Group, Inc. - 933 Lee Road Suite 400 - Orlando, FL 32810 - t: 407-629-5595 - f: 407-645-2035

Floor Plans:



Southeastern Realty Group
 933 Lee Road, Suite 400, Orlando, Florida 32810
 407-629-5595 phone, 407-645-2035 fax
 Visit our website at www.southeasternrealty.com