

PRIME MEDICAL/OFFICE SPACE AVAILABLE FOR LEASE

15-01 Broadway,
Fair Lawn, New Jersey 07452



BIOC Commercial Real Estate, LLC



Available Medical Space:

- Building Size: Approx. 66,250 SF
- 4 Story Building with 2 Elevators
- 935 SF Three Room Suite Available
- Modern Building with Skylights, Atrium & Fountain
- Handicap Accessible with Ramp and Automotive Entry
- Ample Parking
- Prime Bergen County Location
- Easy Access to Broadway Commuter Rail and Radburn Commuter Rail
- **Asking \$20.00 per SF NNN**



BIOC Commercial Real Estate, LLC

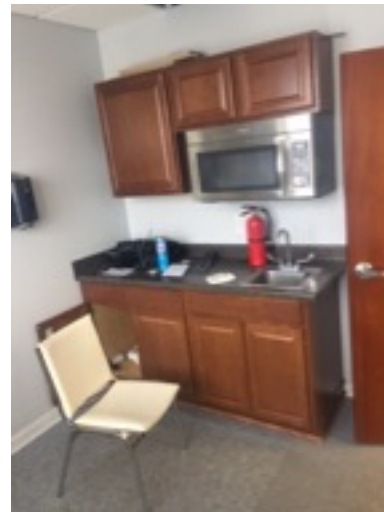
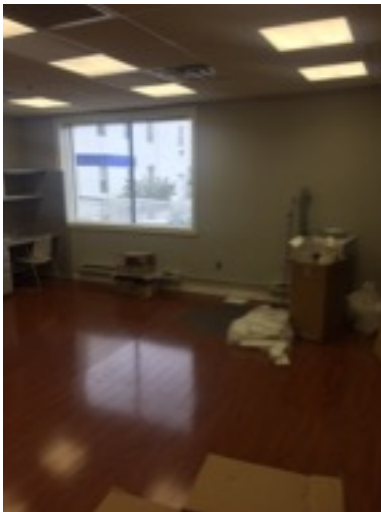
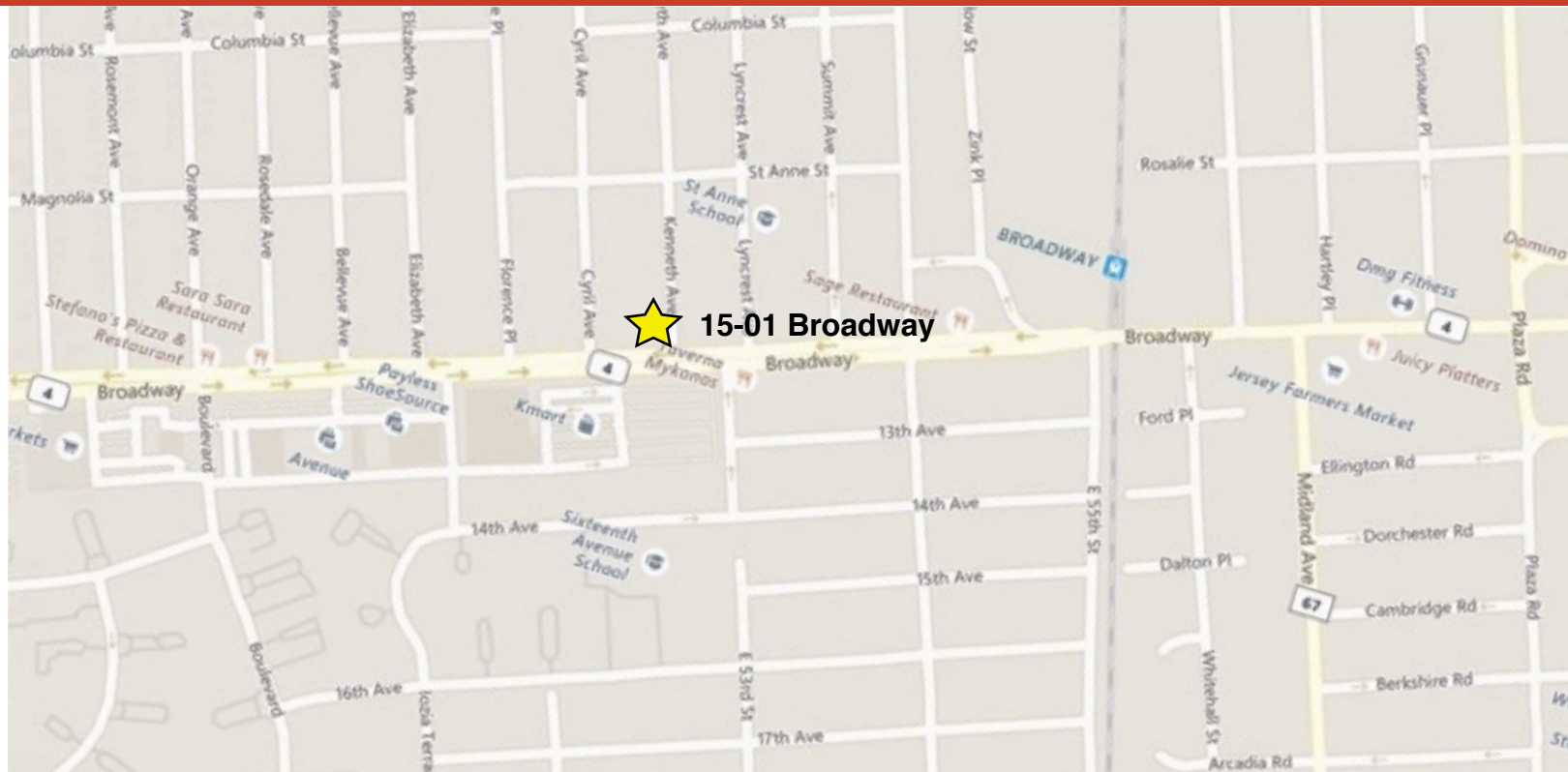
“In the Best Interest of Our Clients”

PRIME MEDICAL/OFFICE SPACE AVAILABLE FOR LEASE

15-01 Broadway,
Fair Lawn, New Jersey 07452



BIOC Commercial Real Estate, LLC



For more information, contact exclusive agents:

Jonathan D. Stravitz
jstravitz@biocre.com
212.252.8799

John B. Aires
jaires@biocre.com
212.252.8766



BIOC Commercial Real Estate 6 East 39th Street, Suite 304, New York, New York 10016