

Upper Arlington Office Suites For Lease



1560 Fishinger Road Upper Arlington



For More Information Contact

Jim Murr

614.224.3388

murr@careyrealtypartners.com

Fax: (614) 461-0011

- Excellent location on Fishinger Road, just east of the “5-Points” intersection, north of the remodeled Kingsdale Shopping Center. Two Owner-managed office buildings with the owner on-site.
- Leased at very competitive full-service lease rates with no common area factor. Pay only for the space over which you have exclusive use. The full service lease eliminates surprises in your rental rate during the term of your lease.
- Remodeled office suites ranging in size from 864 square feet to 2,410 square feet. Flexible floor plans built-out to your specifications. Choose the layout that works best for you. See attached (proposed) floor plans.
- Suite areas are generally 900 to 1,000 square feet; 1,400 square feet or 2,400 square feet. All are efficient and attractive, with good natural light. You choose the carpet.

Carey Realty Partners
140 E. Town Street
Suite 1150
Columbus, Ohio 43215

No representation or warranty is made as to the accuracy of the information contained herein. This submission may be withdrawn or modified at any time by the owner or agent of the property.



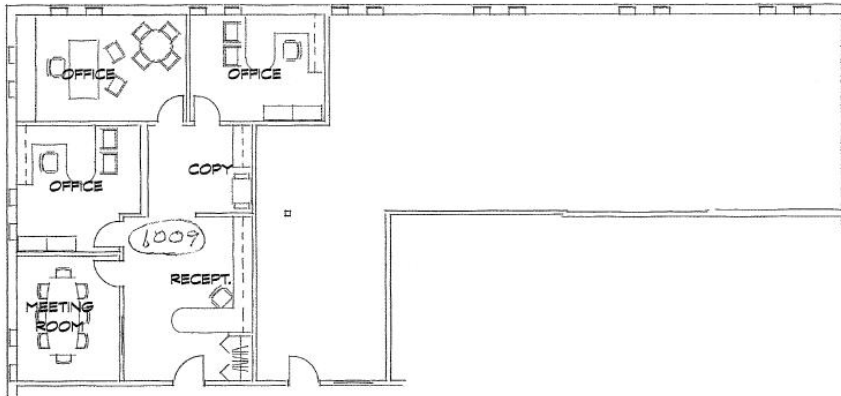
These suites are currently being remodeled.
They will be finished to your specifications.



1560 FISHINGER ROAD FOR PARK STREET VENTURE

1560 Fishinger Road, Upper Arlington, Ohio

July 12, 2011



SUITE 140 FLOOR PLAN - OPTION 1

SCALE: 1/4" = 1'-0"



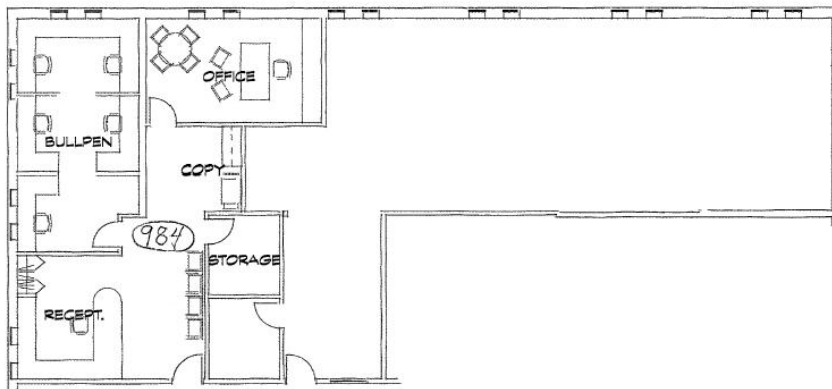
RP Architects, Inc.

4588 Kenny Road, Suite 202 Columbus, Ohio 43221 (614) 457-8710 Fax: (614) 457-8744 design@rparchitectsinc.com

1560 FISHINGER ROAD FOR PARK STREET VENTURE

1560 Fishinger Road, Upper Arlington, Ohio

July 12, 2011



SUITE 140 FLOOR PLAN - OPTION 2

SCALE: 1/4" = 1'-0"



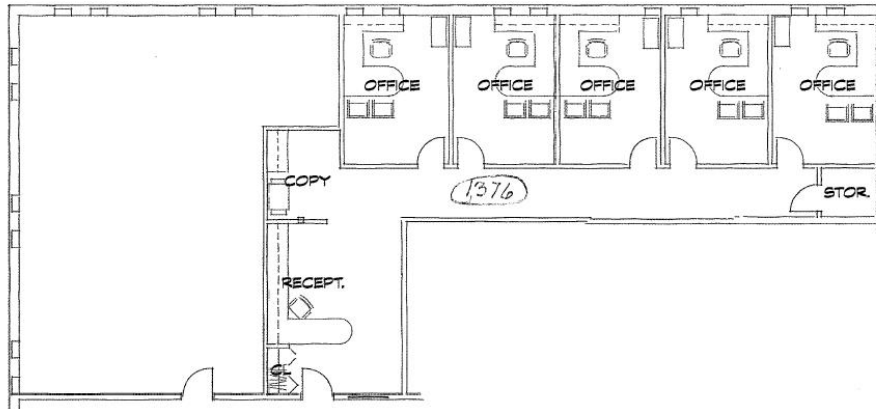
RP Architects, Inc.

4588 Kenny Road, Suite 202 Columbus, Ohio 43221 (614) 457-8710 Fax: (614) 457-8744 design@rparchitectsinc.com

1560 FISHINGER ROAD FOR PARK STREET VENTURE

1560 Fishinger Road, Upper Arlington, Ohio

July 12, 2011



SUITE 150 FLOOR PLAN - OPTION 1

SCALE: 1/4" = 1'-0"

RP Architects, Inc.

4588 Kenny Road, Suite 202

Columbus, Ohio 43221

(614) 457-8710

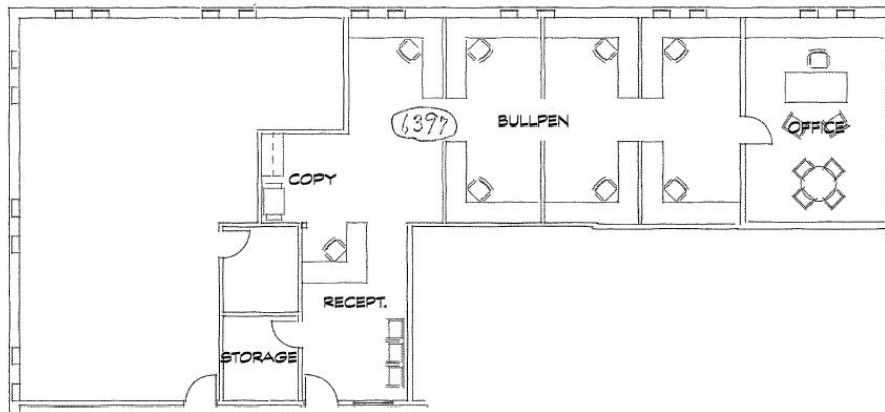
Fax: (614) 457-8744

design@rparchitectsinc.com

1560 FISHINGER ROAD FOR PARK STREET VENTURE

1560 Fishinger Road, Upper Arlington, Ohio

July 12, 2011



SUITE 150 FLOOR PLAN - OPTION 2

SCALE: 1/4" = 1'-0"

RP Architects, Inc.

4588 Kenny Road, Suite 202

Columbus, Ohio 43221

(614) 457-8710

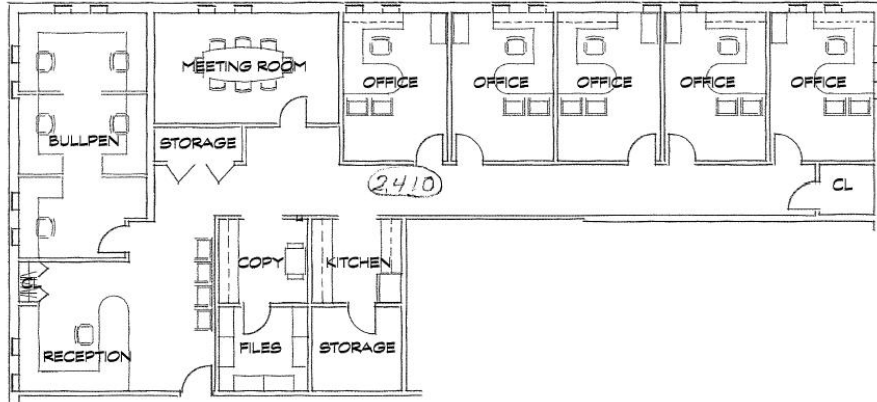
Fax: (614) 457-8744

design@rparchitectsinc.com

1560 FISHINGER ROAD FOR PARK STREET VENTURE

1560 Fishinger Road, Upper Arlington, Ohio

July 12, 2011



SUITE 140/150 FLOOR PLAN - OPTION 2

SCALE: 1/4" = 1'-0"

RP Architects, Inc.

4588 Kenny Road, Suite 202

Columbus, Ohio 43221

(614) 457-8710

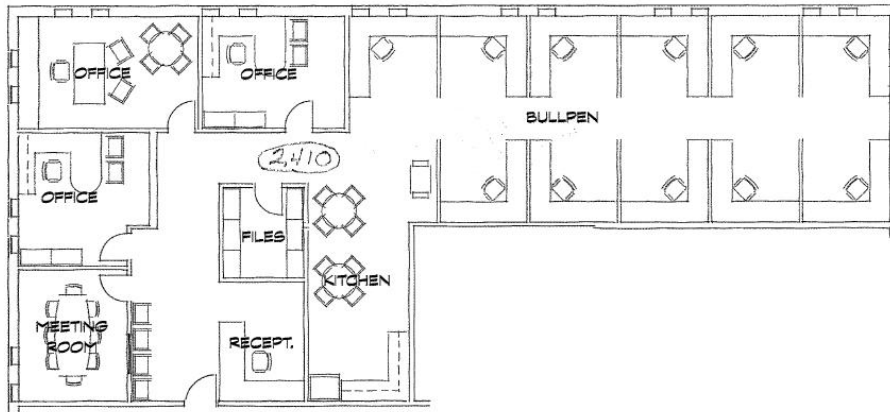
Fax: (614) 457-8744

design@rparchitectsinc.com

1560 FISHINGER ROAD FOR PARK STREET VENTURE

1560 Fishinger Road, Upper Arlington, Ohio

July 12, 2011



SUITE 140/150 FLOOR PLAN - OPTION 1

SCALE: 1/4" = 1'-0"

RP Architects, Inc.

4588 Kenny Road, Suite 202

Columbus, Ohio 43221

(614) 457-8710

Fax: (614) 457-8744

design@rparchitectsinc.com