



29275 Northwestern Highway – Southfield, Michigan



OFFICE / MEDICAL SPACE FOR LEASE

- Up to 2,982 Square Feet Available
- Turn-key Ready Space Adjacent to Elevator
- Exterior Signage Available
- Abundant Parking
- Excellent Access to Highways
- Upgraded Lobby & Common Areas
- Beautifully Landscaped
- Professionally Managed



Northwestern
Medical Center

SUITE DETAILS:

Suite 207: 2,982 SF



For more information, please contact:

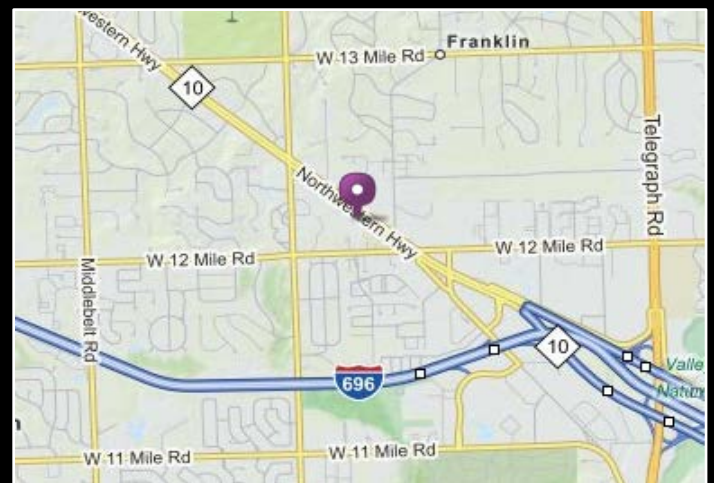
SCOTT MARCUS

Office: 248.645.2600

Cell: 248.730.2227

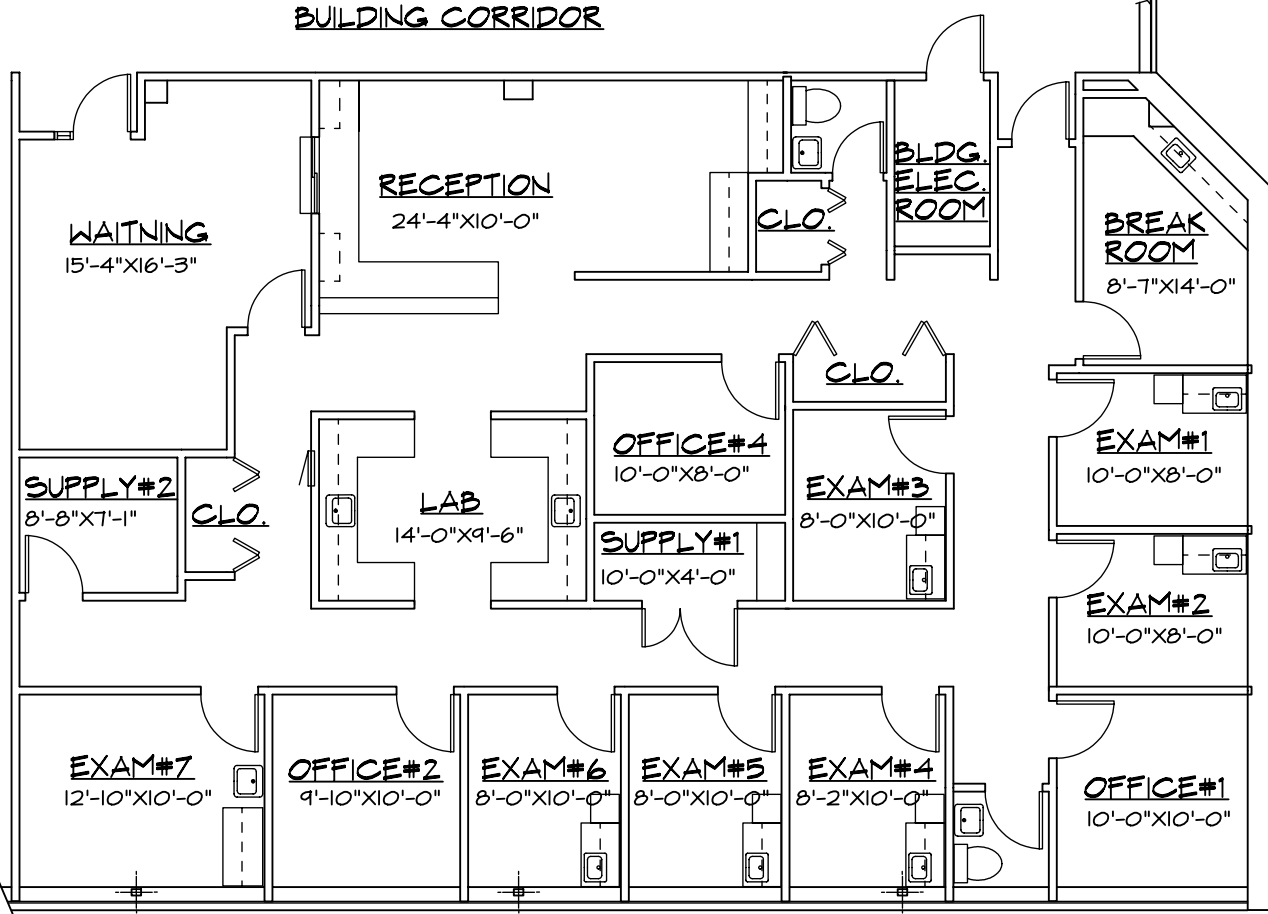
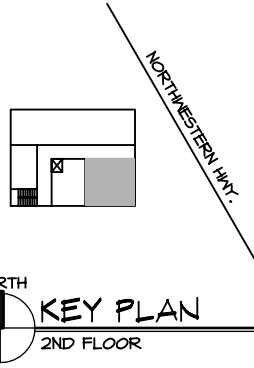
Marcus@RSMDevelopment.com

RSM DEVELOPMENT
& MANAGEMENT



NORTHWESTERN MEDICAL BUILDING

29275 NORTHWESTERN HIGHWAY
SOUTHFIELD, MI

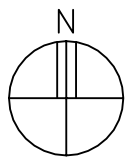


SUITE #207
AREA: 2,982 RENTABLE SQ.FT

FOR INFORMATION CALL:

RSM DEVELOPMENT
& MANAGEMENT

C/O SCOTT J. MARCUS
RSM MANAGEMENT
(248) 645-2600



SPACE AVAILABLE: SUITE #207

NOT TO SCALE



NOTE:
1. ALL DIMENSIONS ARE APPROX.
INTERIOR DIMENSIONS