

FOR LEASE

18-20 Memorial Medical Drive Greenville, SC 29605

NAI Earle Furman



Medical | 2,663 - 5,326 SF

- Can be combined or leased separate
- Renovations underway
- Medical or general office use
- Outside city limits - zoned C-2
- Ample parking
- 27 parking spaces (5 x 1,000)
- Located in Memorial Medical Park
- Easy access to Prisma Health Main Campus, Cancer Institute, Shiners Hospital, VA Clinic and Downtown Greenville
- Lease rate: \$12.00/SF NNN



✉ **Keith Jones, CCIM, SIOR** ✉ **Patrick "McNeil" Epps, CCIM**
O: +1 864 232 9040
keith@naiearlefurman.com
O: +1 864 232 9040 x5956
C: +1 803 473 0179
mepps@naiearlefurman.com

No Warranty, Or Representation, Express Or Implied, Is Made As To The Accuracy Of The Information Contained Herein, And The Same Is Submitted Subject To Errors, Omissions, Change Of Price, Partial Or Other Conditions, Prior Sale, Lease Or Financing, Or Withdrawal Without Notice, And Of Any Special Listing Conditions Imposed By Our Principals. No Warranties Or Representations Are Made As To The Condition Of The Property Or Any Hazards Contained Therein Are Any To Be Implied.

📍 **101 E Washington St**
Greenville, SC 29601
naief.com

FOR LEASE

18-20 Memorial Medical Drive Greenville, SC 29605



✉ Keith Jones, CCIM, SIOR
O: +1 864 232 9040
keith@naiearlefurman.com

✉ Patrick "McNeil" Epps, CCIM
O: +1 864 232 9040 x5956
C: +1 803 473 0179
mepps@naiearlefurman.com

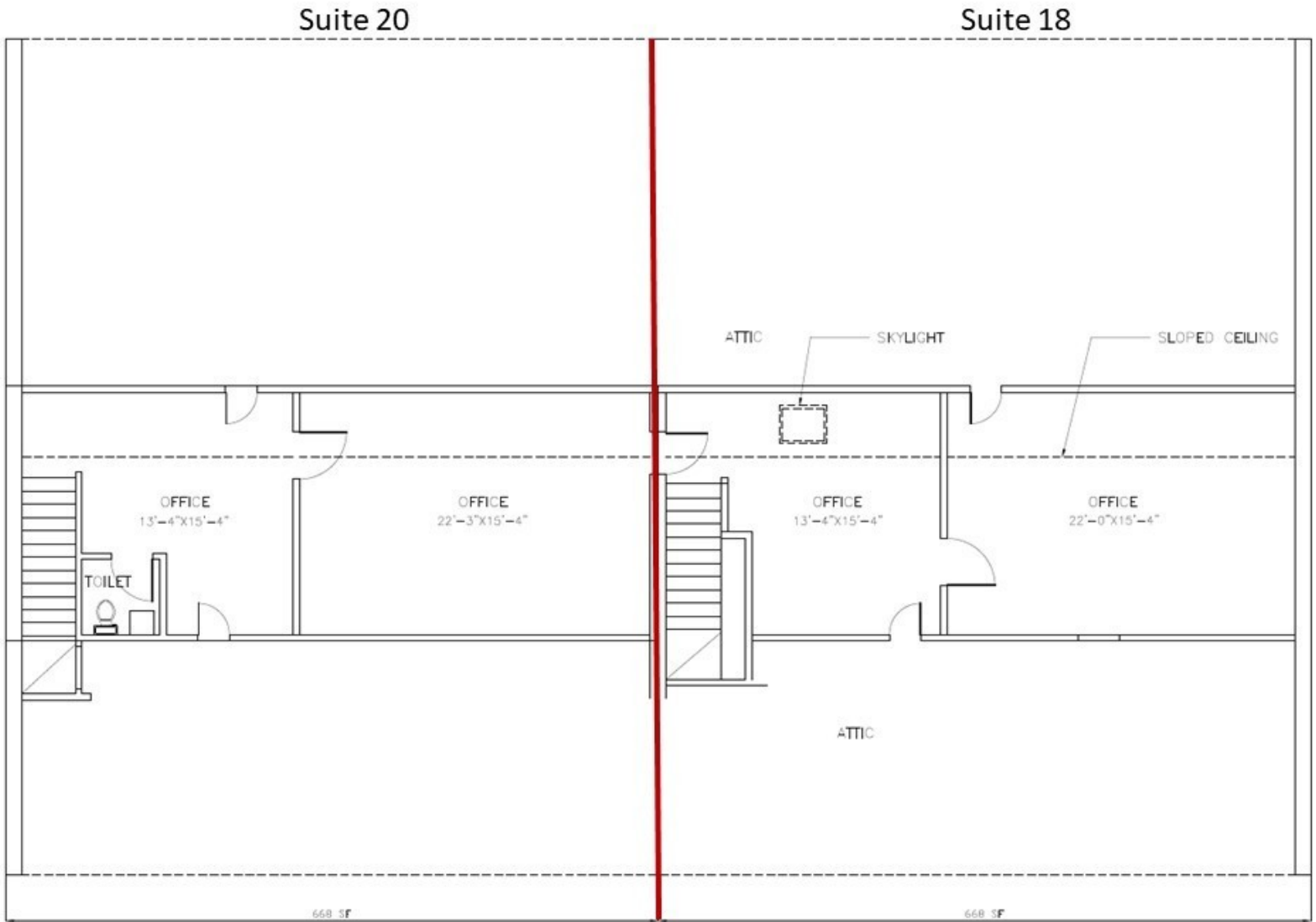
No Warranty Or Representation, Express Or Implied, Is Made As To The Accuracy Of The Information Contained Herein, And The Same Is Submitted Subject To Errors, Omissions, Change Of Price, Rental Or Other Conditions, Prior Sale, Lease Or Financing, Or Withdrawal Without Notice, And Of Any Special Listing Conditions Imposed By Our Principals No Warranties Or Representations Are Made As To The Condition Of The Property Or Any Hazards Contained Therein Are Any To Be Implied.

NAI Earle Furman

FOR LEASE

18-20 Memorial Medical Drive Greenville, SC 29605

UPPER LEVEL FLOOR PLAN



✉ Keith Jones, CCIM, SIOR
O: +1 864 232 9040
keith@naiearlefurman.com

✉ Patrick "McNeil" Epps, CCIM
O: +1 864 232 9040 x5956
C: +1 803 473 0179
mepps@naiearlefurman.com

No Warranty Or Representation, Express Or Implied, Is Made As To The Accuracy Of The Information Contained Herein, And The Same Is Submitted Subject To Errors, Omissions, Change Of Price, Rental Or Other Conditions, Prior Sale, Lease Or Financing, Or Withdrawal Without Notice, And Of Any Special Listing Conditions Imposed By Our Principals. No Warranties Or Representations Are Made As To The Condition Of The Property Or Any Hazards Contained Therein Are Any To Be Implied.

NAI Earle Furman