



Bill Chapman

Chapman Commercial Realty, LLC.

2310 Whitesburg Drive, Suite 6

Huntsville, AL 35801

Cell: (256) 656-8413

Office: (256) 715-8064

bill@huntsvillecommercialbrokerage.com



\$3,200,000 or
\$6 Per SqFt
Leaseable Space

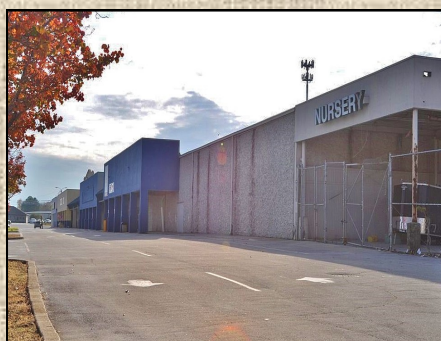
2601 North Memorial Parkway

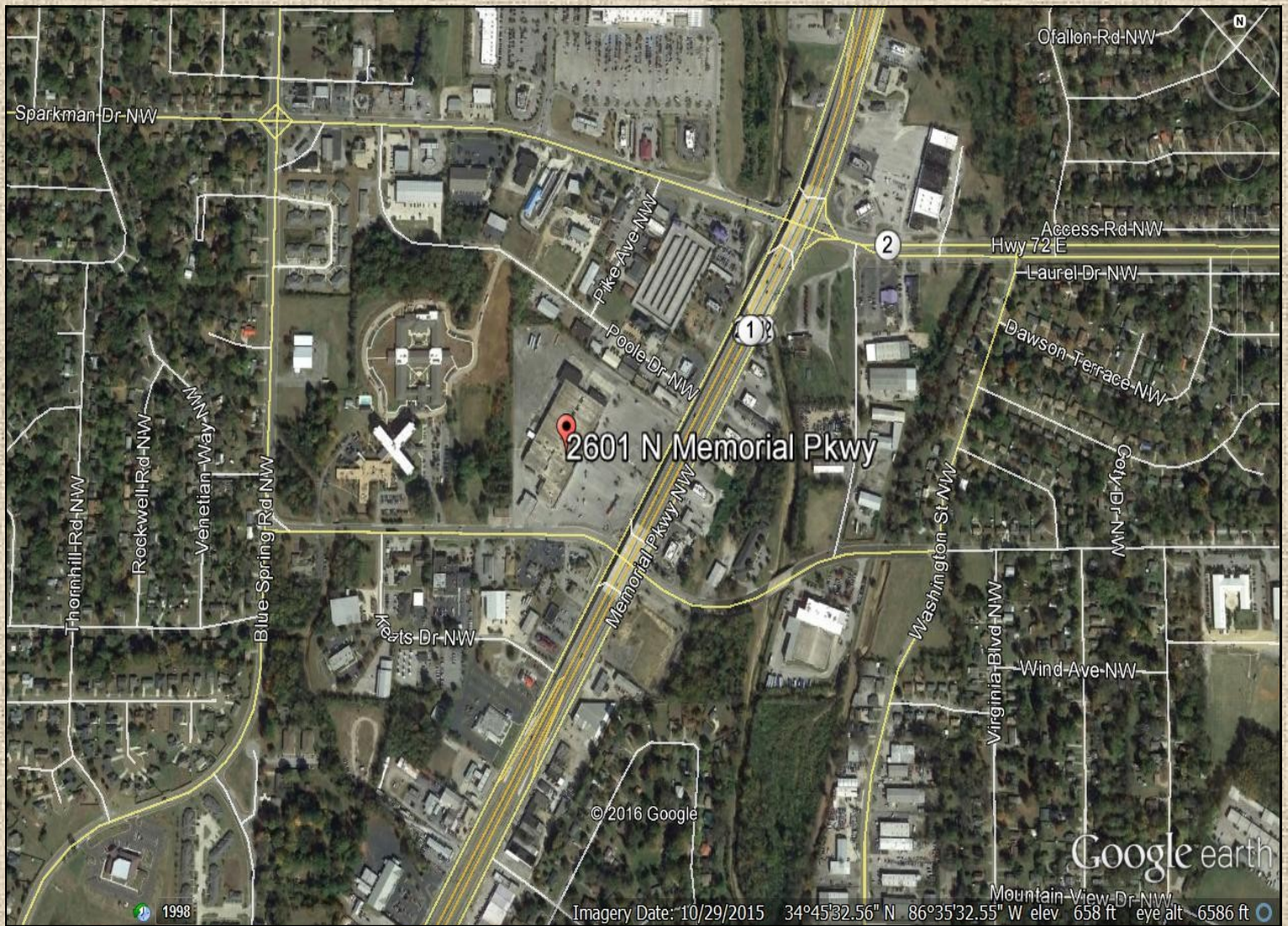
Huntsville | AL | 35811

For Lease or For Sale! High traffic retail strip center located at the hard signalized corner of 2601 N Memorial Parkway and Max Luther Drive. In the sale of this property: a 120,000 square foot building, on 13+ acres, with ample parking. Another option for this location could be the two units: #1. 15,000 square feet and/or #2. 25,000 square feet to total 40,000 square foot space that is available for lease. Zoned Light Industrial. High visibility from Hwy 231/ Memorial Parkway.

**Call Bill for an appointment today!
(256) 715-8064**

** All Information herein deemed reliable, but to be verified by Purchaser.





Directions: Go North on Hwy 231 / Memorial Parkway to the Max Luther Exit. At the light from the off-ramp, make left. Property is on right.

Call Bill for an appointment today!

(256) 715-8064