



**FOR LEASE**  
4210 Wheaton Way  
Bremerton, WA 98310

WHEATON WAY



# BREMERTON RETAIL

Jamie Firth | Lisa Tallman

First Western Properties—Tacoma Inc. | 253.472.0404  
6402 Tacoma Mall Blvd, Tacoma, WA 98409 | fwp-inc.com



**BREMERTON RETAIL** is located in the heart of Bremerton on the main retail corridor of Wheaton Way. The site has great access to surrounding retailers as well as major employers.

**4210 WHEATON WAY:**

**BUILD TO SUIT - CALL FOR DETAILS**

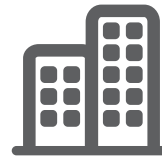
- 8,000 - 10,000 square foot build to suit available for lease
- Building space can be demised
- Multiple access points from Wheaton Way
- Located within close proximity to the Puget Sound Naval Shipyard, and Naval Hospital
- Preliminary plans can be altered & are subject to change
- Anchored by Narrows Self Storage, Washington State Department of Social & Health Services, and auto parts store coming soon!



Population



Average HH Income

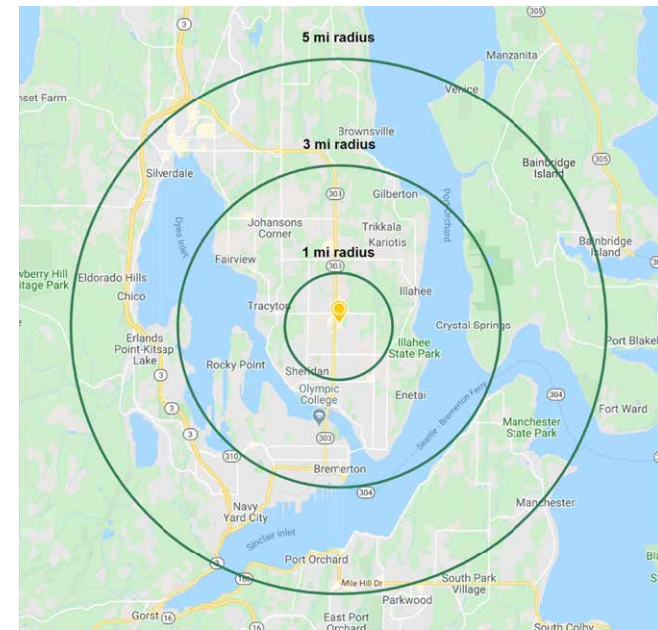
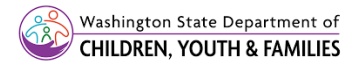


Daytime Population

Regis - 2020

	Population	Average HH Income	Daytime Population
Mile 1	11,422	\$81,048	8,192
Mile 3	65,231	\$84,921	38,055
Mile 5	113,846	\$90,969	79,250

**NEARBY TENANTS**





LOCATION DETAILS



POTENTIAL RENDERINGS



LOCATION DETAILS



Located moments from Puget Sound Naval Shipyard



Located in the Bremerton Retail Core



Located moments from Olympic College



35,000 CPD Wheaton Way



## OLYMPIC COLLEGE



Established in 1946, Olympic College has a main campus of 33 acres and offers Associate and Bachelor degree options. Between the main campus in Bremerton, and its two satellite campuses in Poulsbo and Shelton, there are 12,825 students.

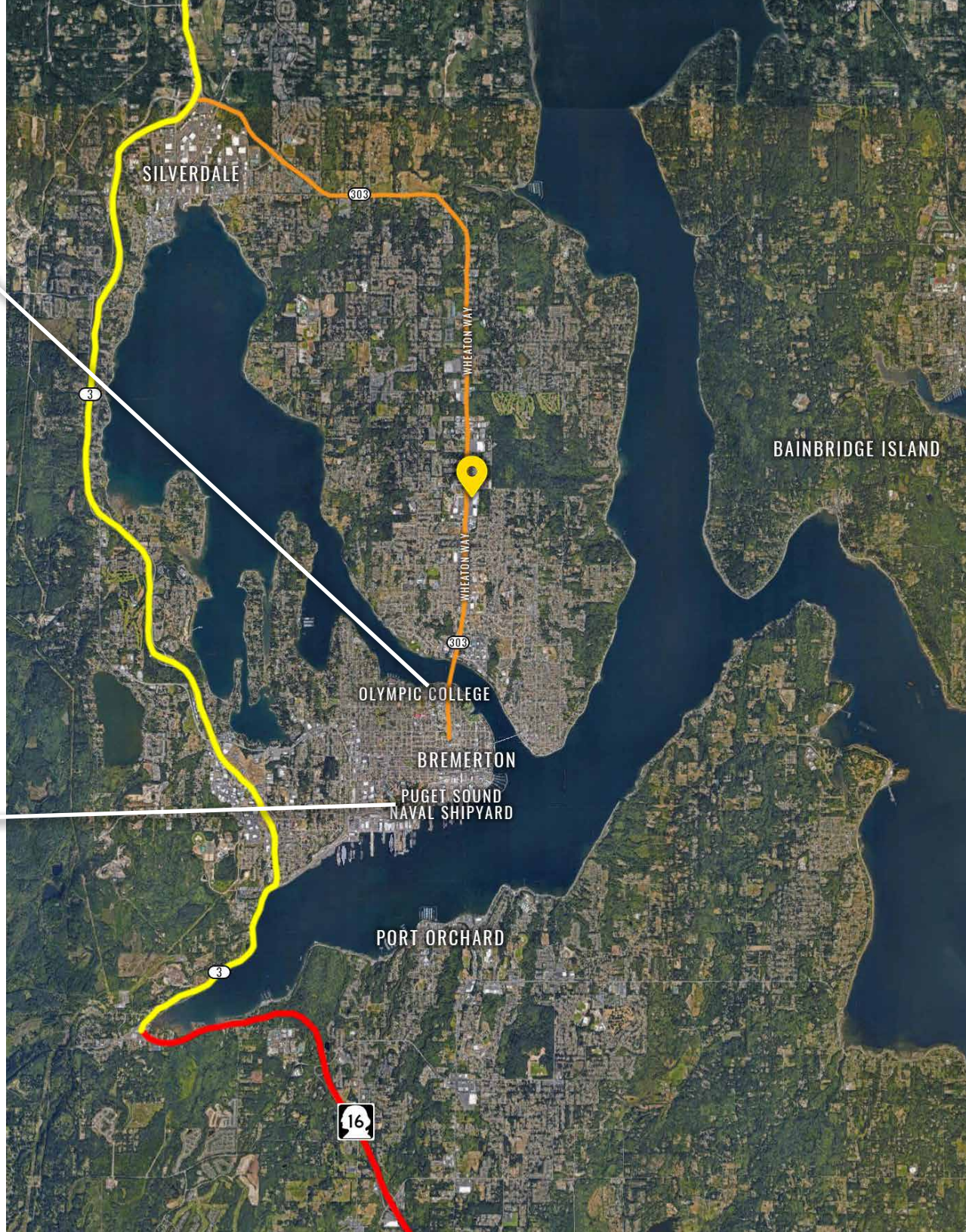
Wikipedia

## PUGET SOUND NAVAL SHIPYARD



This 179 acre US Navy Shipyard was established in 1891. It is one of Washington State's largest industrial installations and provides the Navy with maintenance, modernization, and technical & logistics support. As one of the largest employers in Kitsap County, the Puget Sound Naval Shipyard staffs more than 14,000 people.

Wikipedia





TACOMA | KIRKLAND | PORTLAND | SEATTLE



# RELATIONSHIP FOCUSED. RESULTS DRIVEN.

**JAMIE FIRTH**

253.284.3649  
jamie@firstwesternproperties.com

**LISA TALLMAN**

253.471.5504  
lisa@firstwesternproperties.com



First Western Properties—Tacoma Inc. | 253.472.0404  
6402 Tacoma Mall Blvd, Tacoma, WA 98409 | fwp-inc.com

© First Western Properties, Inc. DISCLAIMER: The above information has been secured from sources believed to be reliable, however, no representations are made to its accuracy. Prospective tenants or buyers should consult their professional advisors and conduct their own independent investigation. Properties are subject to change in price and/or availability without notice.