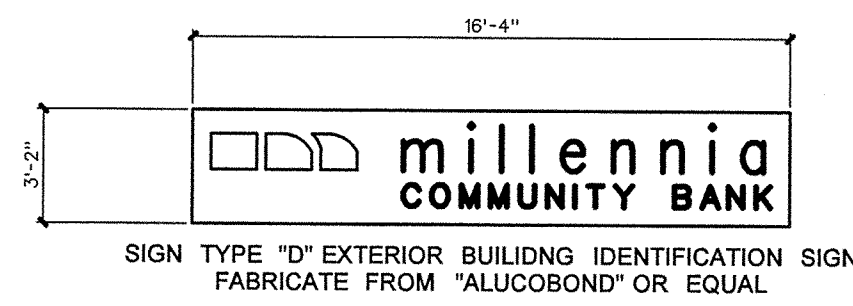
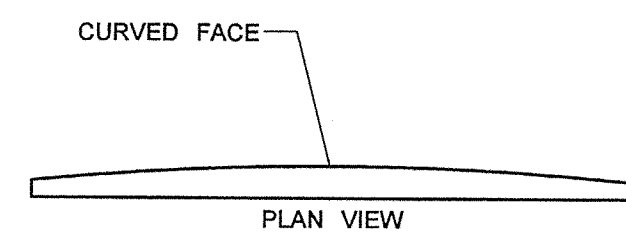


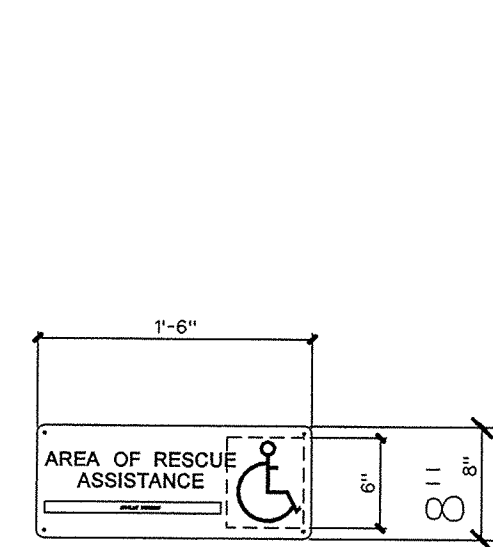
open closed

SIGN TYPE "E" DRIVE THROUGH TELLER LANE SIGN

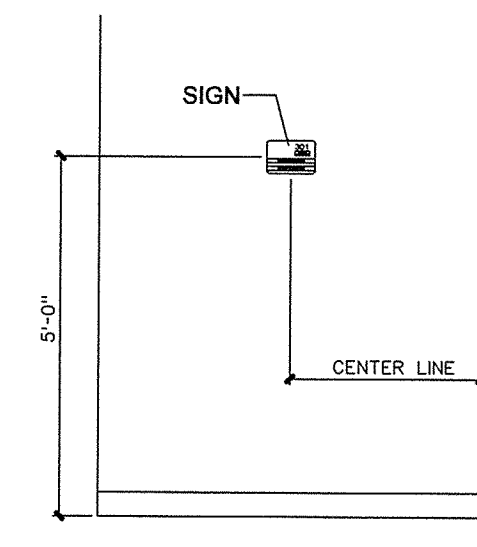


ENCLOSED LIGHTED SIGN
FACE TO BE LOGO OF MILLENNIA
COMMUNITY BANK

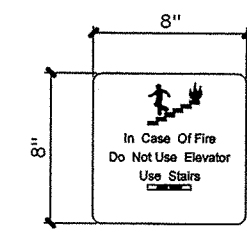
001.4 EXTERIOR SIGNAGE TYPES
SCALE: N.T.S.



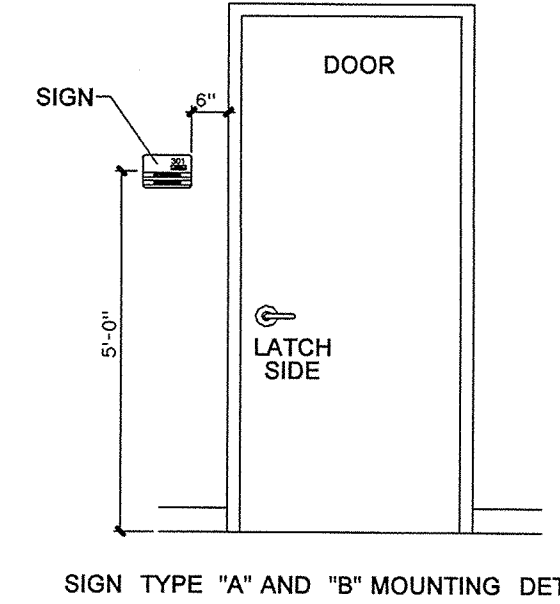
SIGN TYPE "C" INTERIOR INFORMATION SIGN



SIGN TYPE "C" MOUNTING DETAIL

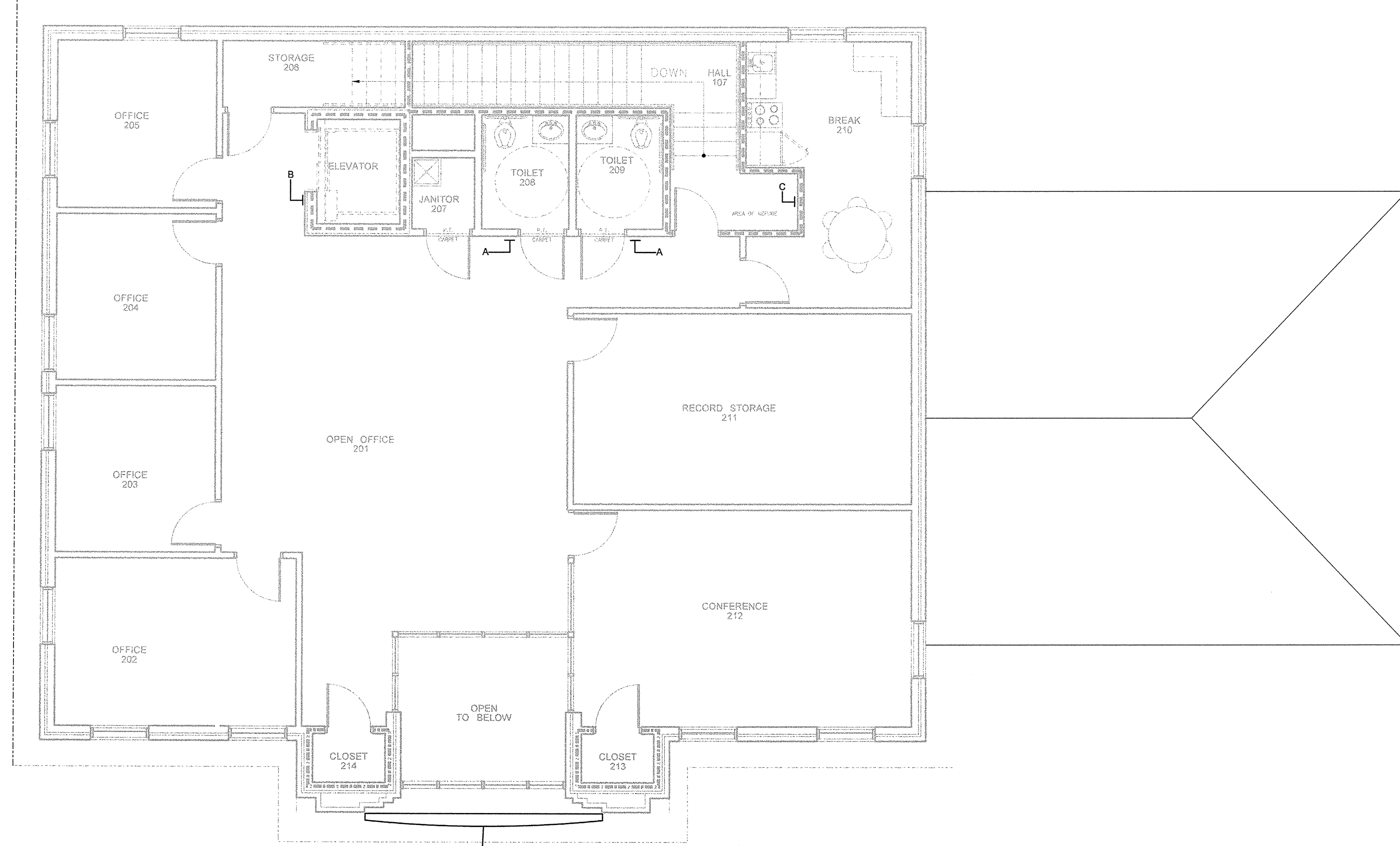


SIGN TYPE "B" INTERIOR INFORMATION SIGN



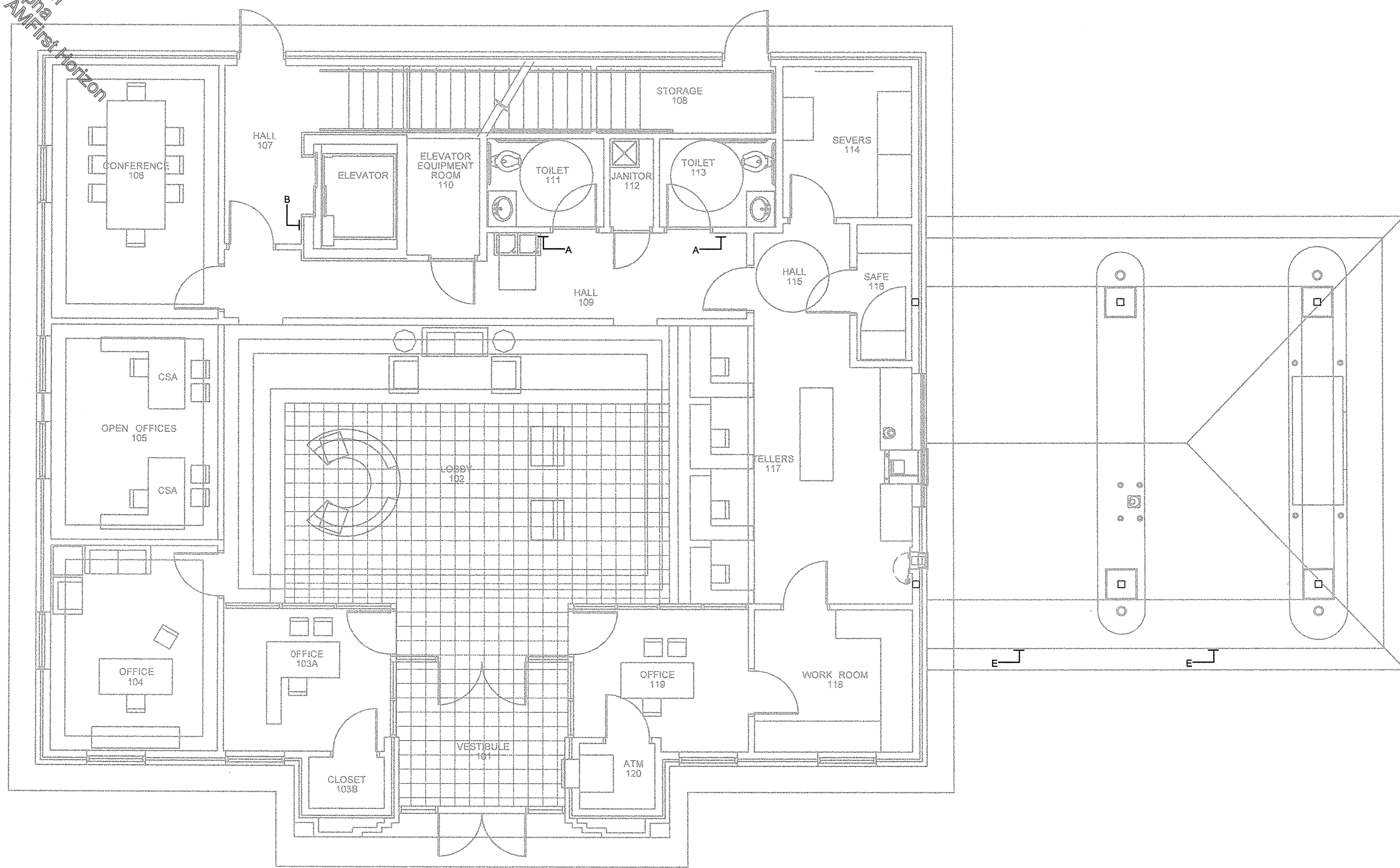
SIGN TYPE "A" AND "B" MOUNTING DETAIL

001.3 INTERIOR SIGNAGE TYPES
SCALE: N.T.S.



001.2 SIGNAGE PLAN - SECOND FLOOR
SCALE: 3/16" = 1'-0"

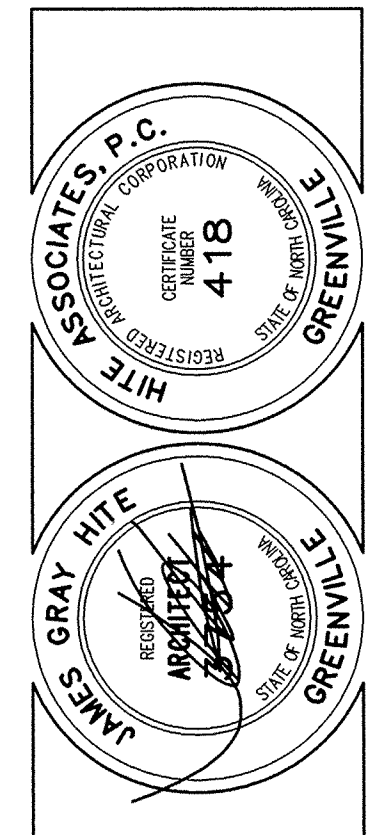
7/17/2014 10:06:31 AM
Project: Alpha
First Floor
Steve Bleber
Downloaded by:
CONFIDENTIAL



001.1 SIGNAGE PLAN - FIRST FLOOR
SCALE: 3/16" = 1'-0"

Rev	Date

Hite associates
ARCHITECTURE / ENGINEERING / TECHNOLOGY
2600 Meridian Drive / Greenville, NC 27834 / Tel: (252) 757-0333



Permanent Banking Office
Millennia Community Bank
1310 West Arlington Boulevard
Greenville / North Carolina

Project No.	20410
Date	25 November 2004
Drawing No.	A 001

RECORD DRAWING