

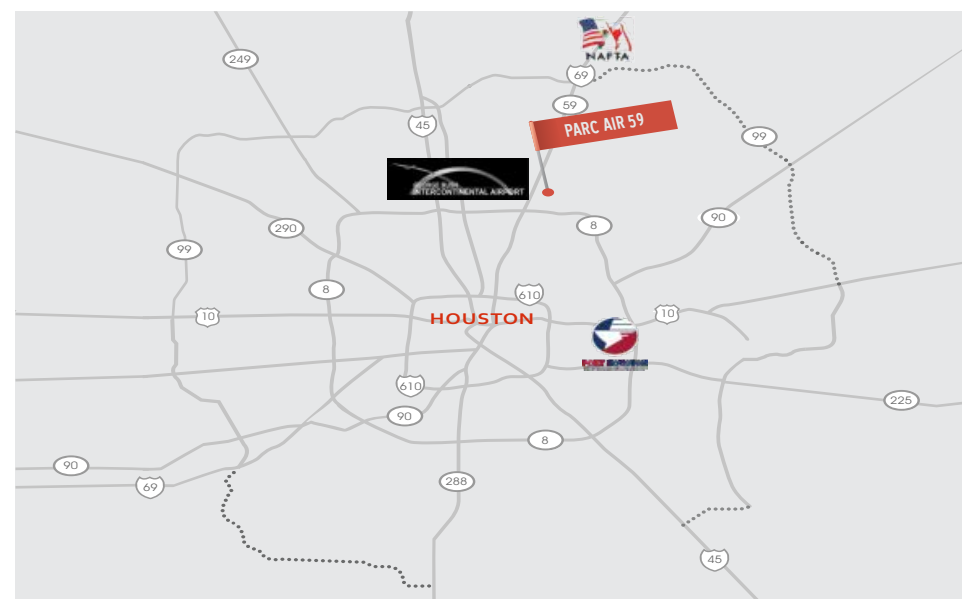
JACKSONSHAW

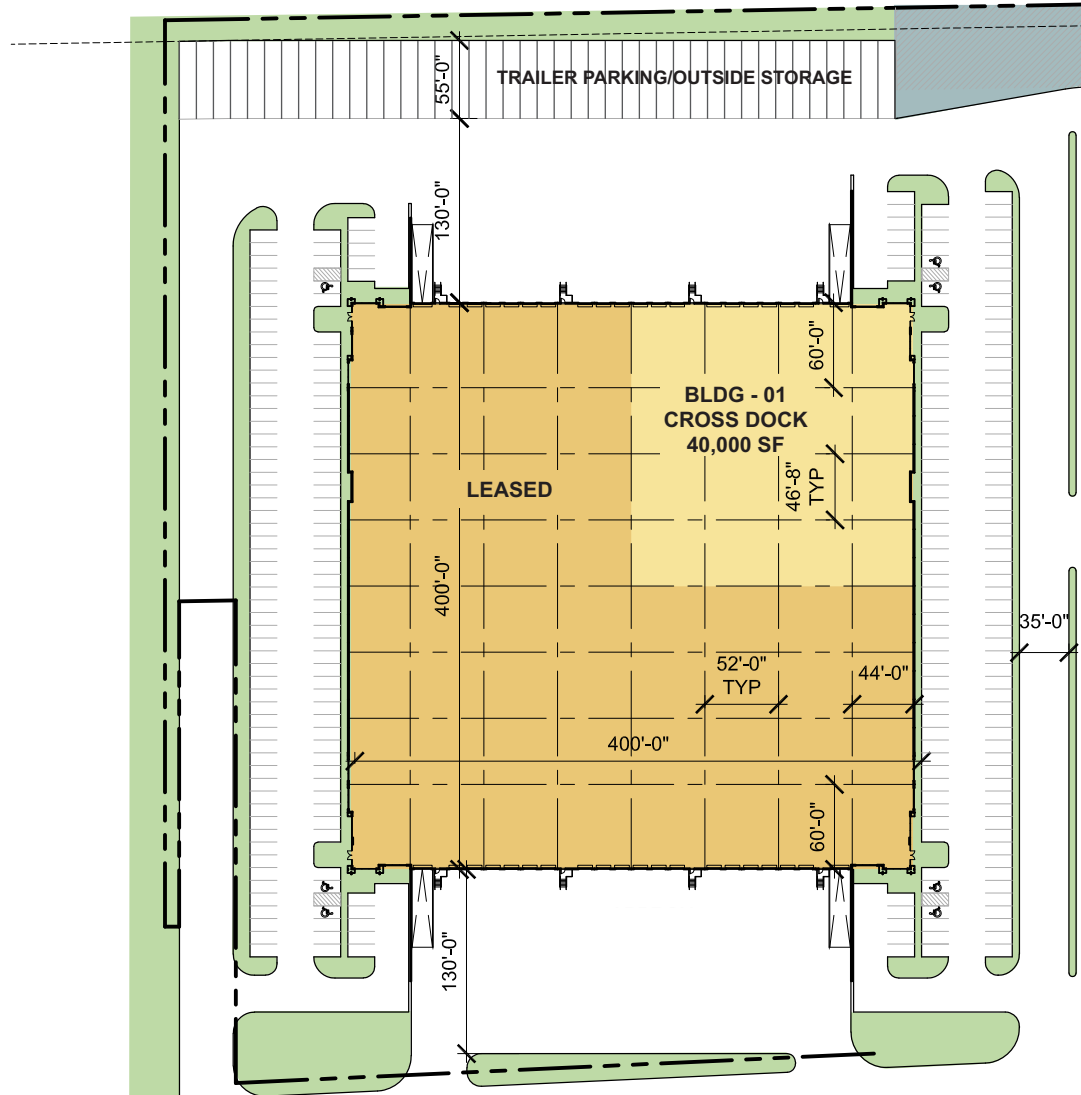


PARC AIR 59

BUILDING 1 18730 Eastex Freeway 59 | Humble, TX

SQUARE FEET:	160,000	PARKING SPACES:	59
AVAILABLE SQUARE FEET:	40,000	TRUCK COURT:	130' / 185'
MINIMUM DIVISIBLE:	40,000	DOCK DOORS:	27
BLDG. DEPTH:	400'	TRAILER PARKING:	21
CLEAR HEIGHT:	32'	SPRINKLER SYSTEM:	ESFR
TYPICAL BAY:	52' x 46' 8"	CONFIGURATION:	Cross Dock
DRIVE-IN DOORS:	3		





FOR LEASING INFORMATION



ALLISON BERGMANN
allison.bergmann@cushwake.com
713 963 2865

NATHAN WYNNE
nathan.wynne@cushwake.com
713 345 1431

BEAU KALEEL
beau.kaleel@cushwake.com
713 963 2844

JASON DILLEE
jason.dillee@cushwake.com
713 345 1432

JACKSONSHAW

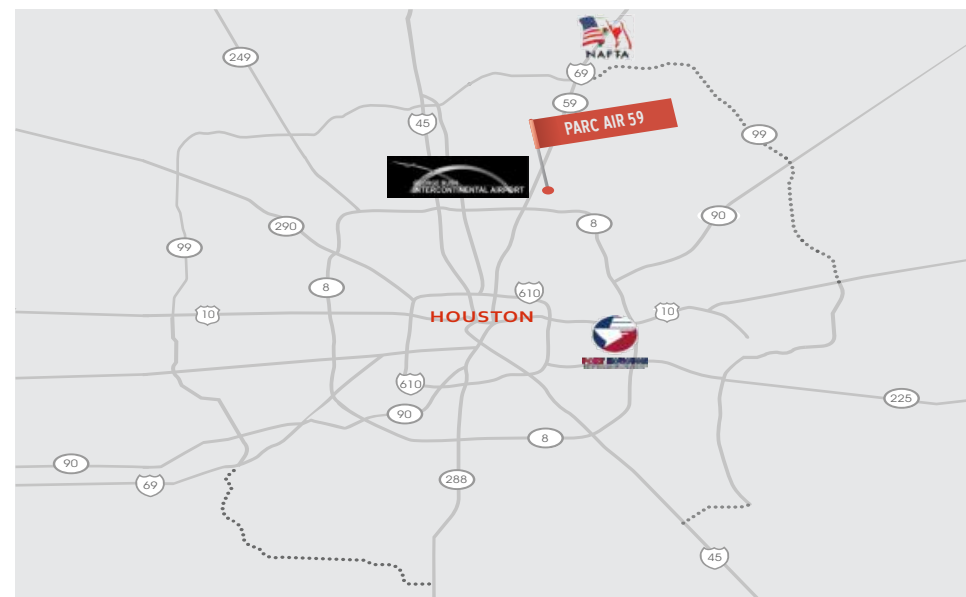


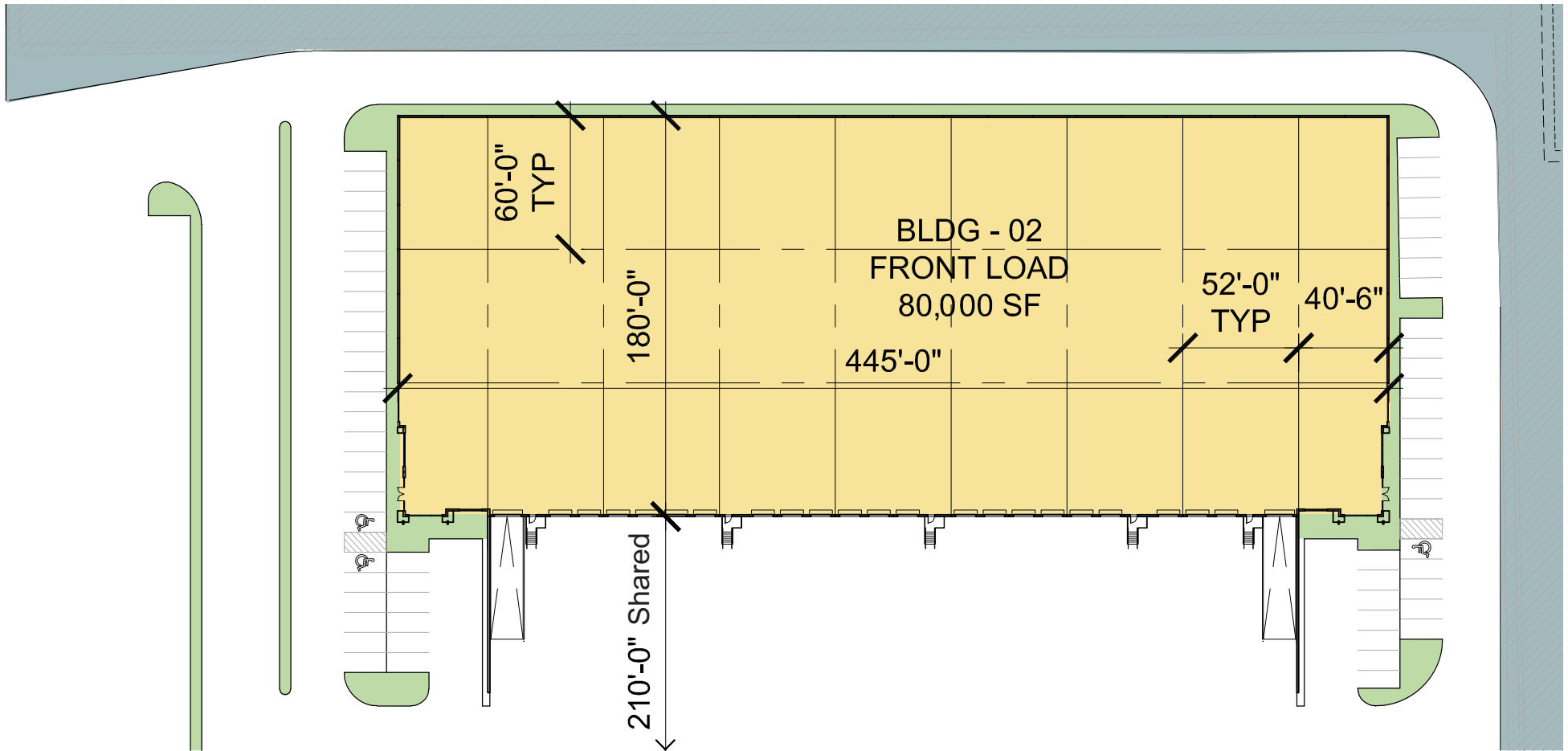
PARC AIR 59

BUILDING 2

18720 Eastex Freeway 59 | Humble, TX

SQUARE FEET:	80,000	PARKING SPACES:	57
MAX CONTIGUOUS:	80,000	TRUCK COURT:	210' (Shared)
MINIMUM DIVISIBLE:	22,000	DOCK DOORS:	21
BLDG. DEPTH:	180'	TRAILER PARKING:	0
CLEAR HEIGHT:	28'	SPRINKLER SYSTEM:	ESFR
TYPICAL BAY:	52' x 60'	CONFIGURATION:	Front Load
DRIVE-IN DOORS:	2		





FOR LEASING INFORMATION



ALLISON BERGMANN
allison.bergmann@cushwake.com
713 963 2865

NATHAN WYNNE
nathan.wynne@cushwake.com
713 345 1431

BEAU KALEEL
beau.kaleel@cushwake.com
713 963 2844

JASON DILLEE
jason.dillee@cushwake.com
713 345 1432

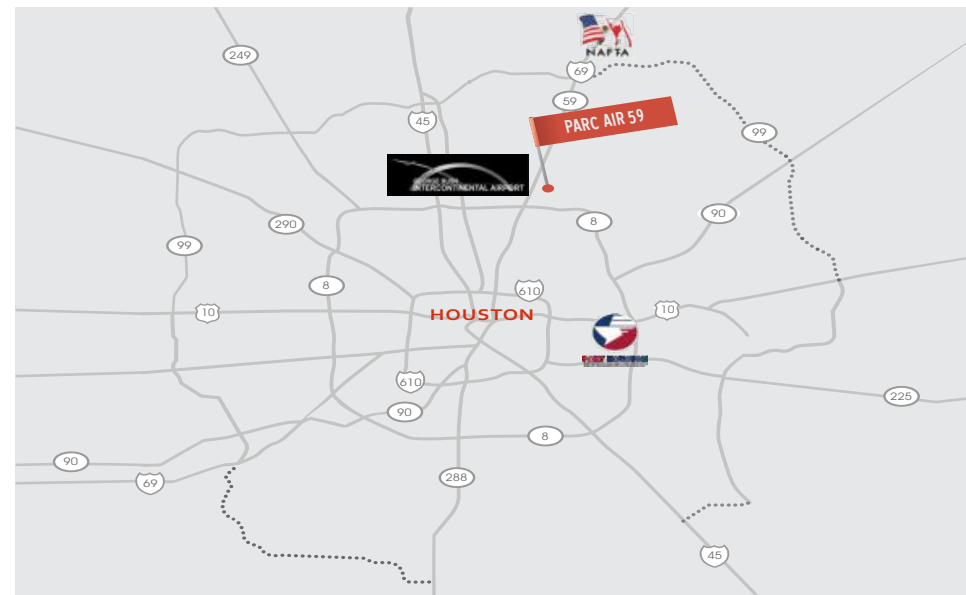


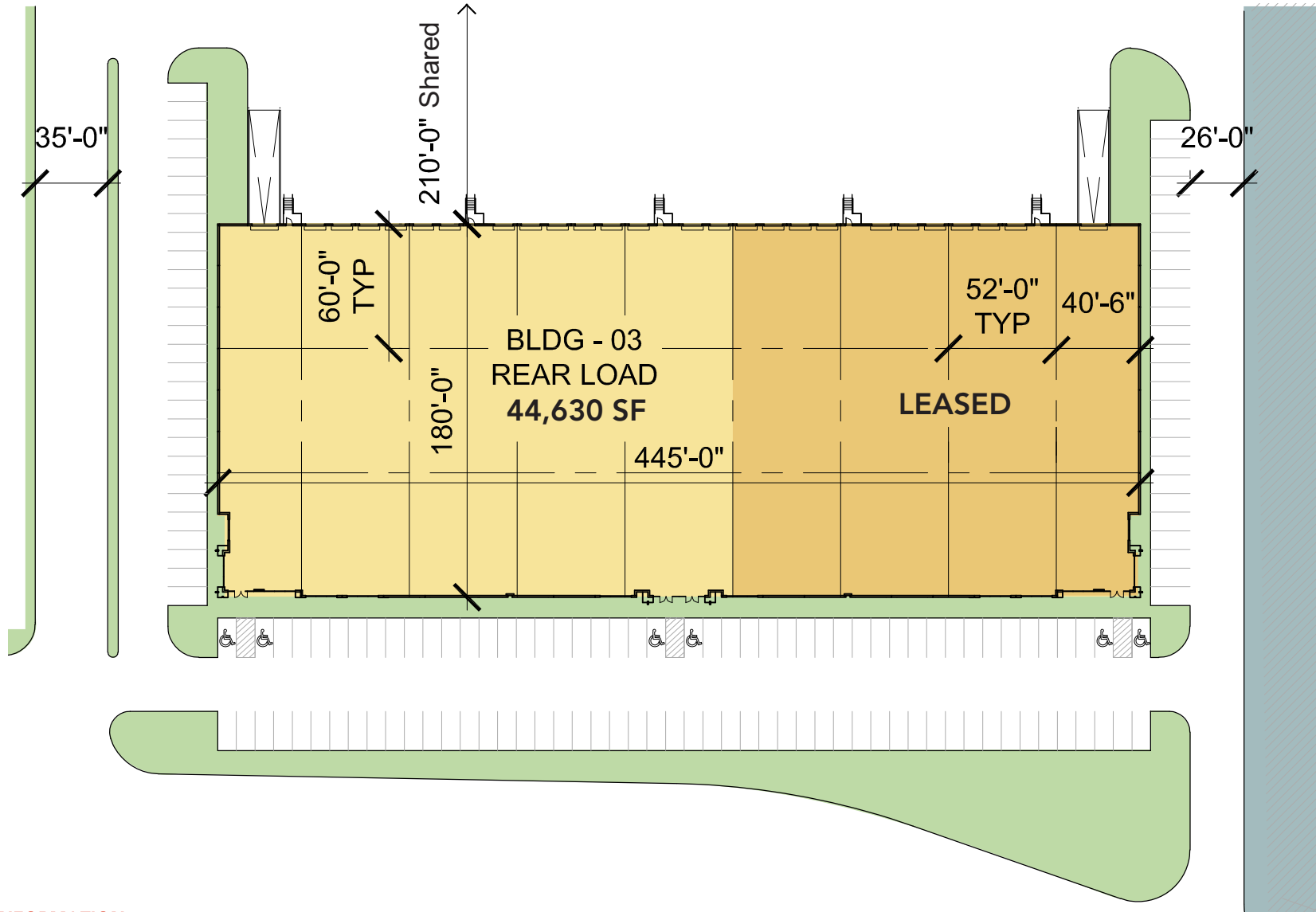
PARC AIR 59

BUILDING 3

18710 Eastex Freeway 59 | Humble, TX

SQUARE FEET:	80,000	PARKING SPACES:	95
AVAILABLE SQUARE FEET:	44,630	TRUCK COURT:	210' (Shared)
MINIMUM DIVISIBLE:	14,000	DOCK DOORS:	14
BLDG. DEPTH:	180'	TRAILER PARKING:	0
CLEAR HEIGHT:	28'	SPRINKLER SYSTEM:	ESFR
TYPICAL BAY:	52' x 60'	CONFIGURATION:	Rear Load
	1		





FOR LEASING INFORMATION



ALLISON BERGMANN
allison.bergmann@cushwake.com
713 963 2865

NATHAN WYNNE
nathan.wynne@cushwake.com
713 345 1431

BEAU KALEEL
beau.kaleel@cushwake.com
713 963 2844

JASON DILLEE
jason.dillee@cushwake.com
713 345 1432

DRIVE TIMES FROM PARC AIR 59

Destination	Miles	Minutes
Beltway 8	2	4
George Bush Intercontinental Airport	2	4
Interstate 45	10	11
State Highway 99	10	11
Central Business District	15	15
Interstate 10	20	20
Port Houston	22	21

PARC AIR 59

ON RAMP
FM 1960

ON RAMP
SH 59 | Interstate 69

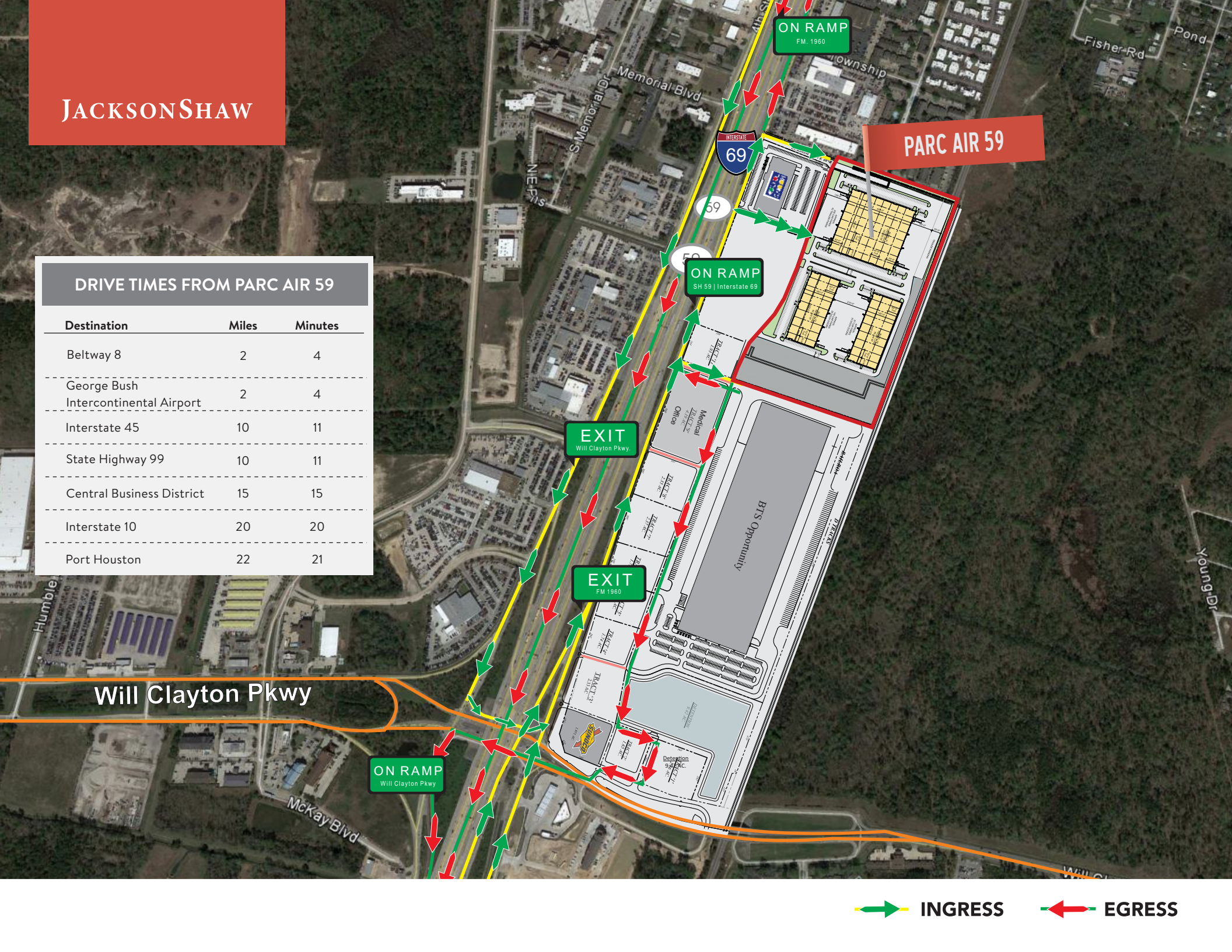
EXIT
Will Clayton Pkwy

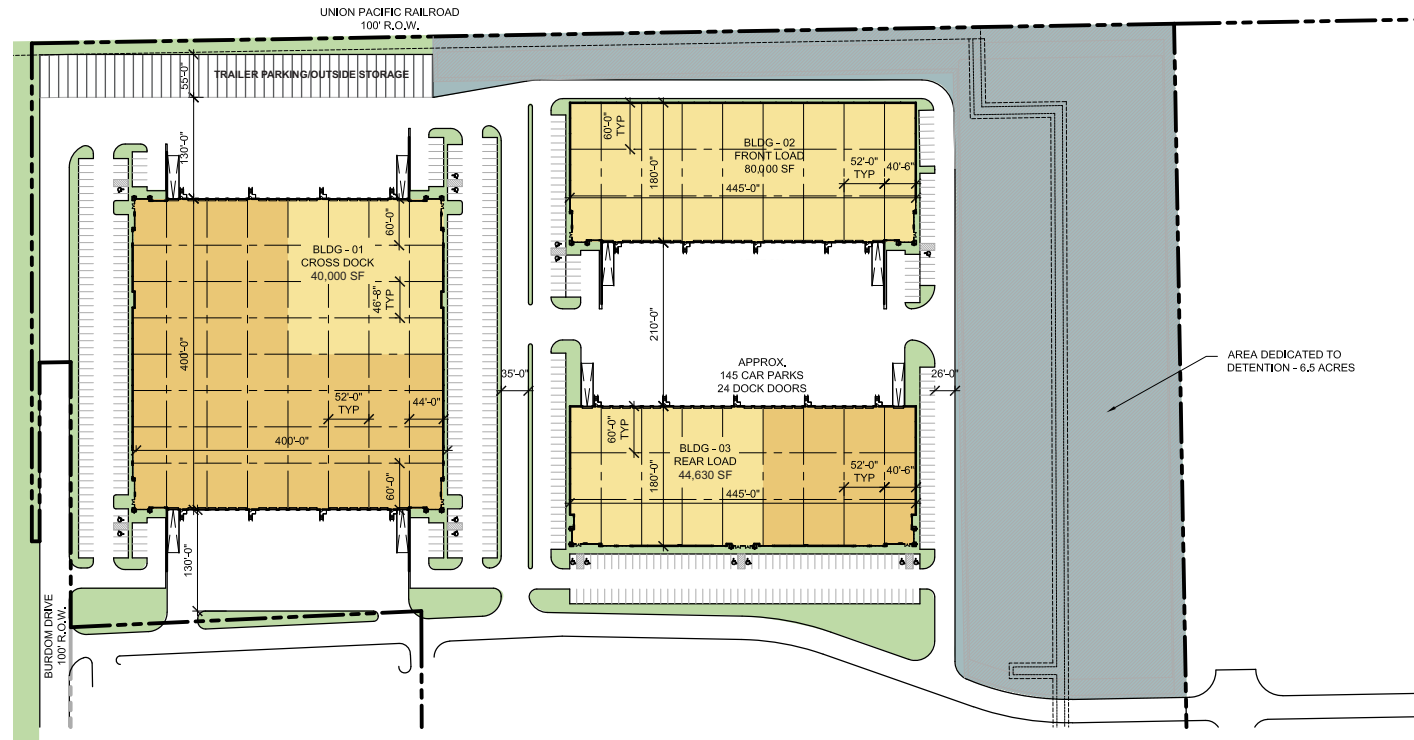
EXIT
FM 1960

ON RAMP
Will Clayton Pkwy

Will Clayton Pkwy

➔ INGRESS ➜ EGRESS





PARC AIR 59	BLDG. 1	BLDG. 2	BLDG. 3	TOTAL
BUILDING SIZE:	160,000 SF	80,000 SF	80,000 SF	320,000 SF
AVAILABLE SQUARE FEET:	40,000 SF	80,000 SF	44,630 SF	164,630 SF
BUILDING CONFIG:	Cross Dock	Front Load	Rear Load	
DIMENSIONS:	400' long x 400' deep	445' long x 180' deep	445' long x 180' deep	
CLEAR HEIGHT:	32'	28'	28'	
FIRE PROTECTION:	ESFR	ESFR	ESFR	
TRUCK COURT:	130'/185'	21' (shared)	21' (shared)	
DOCK DOORS:	27	21	14	
DRIVE-IN DOORS:	3	2	1	
PARKING SPACES:	59	57	95	
TRAILER PARKING:	21	0	0	

FOR LEASING INFORMATION



ALLISON BERGMANN
allison.bergmann@cushwake.com
713 963 2865

NATHAN WYNNE
nathan.wynne@cushwake.com
713 345 1431

BEAU KALEEL
beau.kaleel@cushwake.com
713 963 2844

JASON DILLEE
jason.dillee@cushwake.com
713 345 1432

George Bush International Airport



44

23

31

22

32

33

18

15

14

13

12

11

10

9

8

7

6

4

3

2

1

5

17

19

41

43

36

42

37

38

34

PARC AIR 59

16

69

59

40

29

39

30

21

20

28

27

19

35

Will Clayton Pkwy

Isaac

S-Houston Ave

N-Houston Ave

Townsen Blvd W

Townsen Blvd

Eastex Freeway Serv Rd
N Bender
Eastex Fwy

Kenswick Dr

4th St



Restaurants

- 1 Red Lobster
- 2 Chili's
- 3 Souper Salad
- 4 The Curry House
- 5 Domino's Pizza
- 6 IHOP
- 7 Jason's Deli
- 8 Papacito's Cantina
- 9 Dickey's BBQ
- 10 Golden Corral
- 11 Olive Garden
- 12 Logan's Roadhouse
- 13 Cheddars
- 14 FreeBirds
- 15 Ghengis Grill
- 16 Chex Nous
- 17 Sonic
- 18 Brooklyn Pizzeria
- 19 Whataburger
- 20 Waffle House
- 21 Fox's Pizza Den
- 22 Burger King
- 23 Dolphin Restaurant



Hotels

- 24 Country Inn & Suites
- 25 Fairfield Inn & Suites
- 26 Hampton Inn & Suites
- 27 Best Western
- 28 Sleep Inn & Suites
- 29 Baymont Inn & Suites
- 30 Holiday Inn Express
- 31 La Quinta
- 32 Holiday Inn
- 33 Ramada
- 34 Days Inn
- 35 Regency Inn & Suites



Services

- 36 Valero
- 37 Exxon
- 38 Texaco
- 39 Shell
- 40 Shamrock
- 41 Service King
- 42 Star Cleaners
- 43 Planet Fitness
- 44 George Bush Intercontinental Airport
- 45 Sunoco



Restaurants

- Casa Ole
- Chick-fil-A
- Chipotle
- Great Wraps Grill
- Marble Slab
- Sarku Japan



Retail

- Dillard's
- JCPenny
- Macy's
- Sears



FOR LEASING INFORMATION



ALLISON BERGMANN
allison.bergmann@cushwake.com
713 963 2865

NATHAN WYNNE
nathan.wynne@cushwake.com
713 345 1431

BEAU KALEEL
beau.kaleel@cushwake.com
713 963 2844

JASON DILLEE
jason.dillee@cushwake.com
713 345 1432