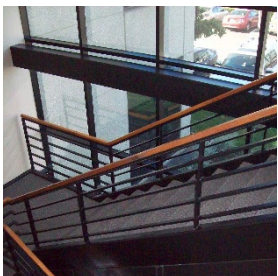
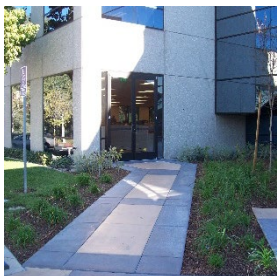
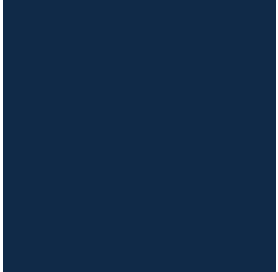


GATEWAY CORPORATE CENTER

1370 Valley Vista Drive ♦ Diamond Bar, CA

For Lease



ANDA
REALTY CAPITAL

CUSHMAN & WAKEFIELD

No warranty or representation, express or implied, is made as to the accuracy of the information contained herein, and same is submitted subject to errors omissions, change of price, rental or other conditions, withdrawal without notice, and to any specific listing conditions, imposed by our principals.

Features:

- Two story, Class "A" Office Building
- Attractive architecture with Dual lobby entrances
- High quality interior finishes
- Master-planned, 255-acre business park designed for corporate headquarters, regional offices, and high tech use
- Convenient access to the 57 (Orange) and 60 (Pomona) freeways
- Scenic valley views, Lush landscaping, Dramatic presence
- Close to Ontario Airport, hotels, restaurants, business services and retail



AVAILABILITIES:

LEASE RATE: \$2.80/SF FSG | PARKING: 4/1000

SUITE	RSF	DESCRIPTION
220	892	2 offices, 1 conference room, open cubicle area
268	1,260	Available 5/10/20

For leasing information,
please contact:

SEAN KERN | 909.942.4691
Senior Director
sean.kern@cushwake.com
Lic. #01377294

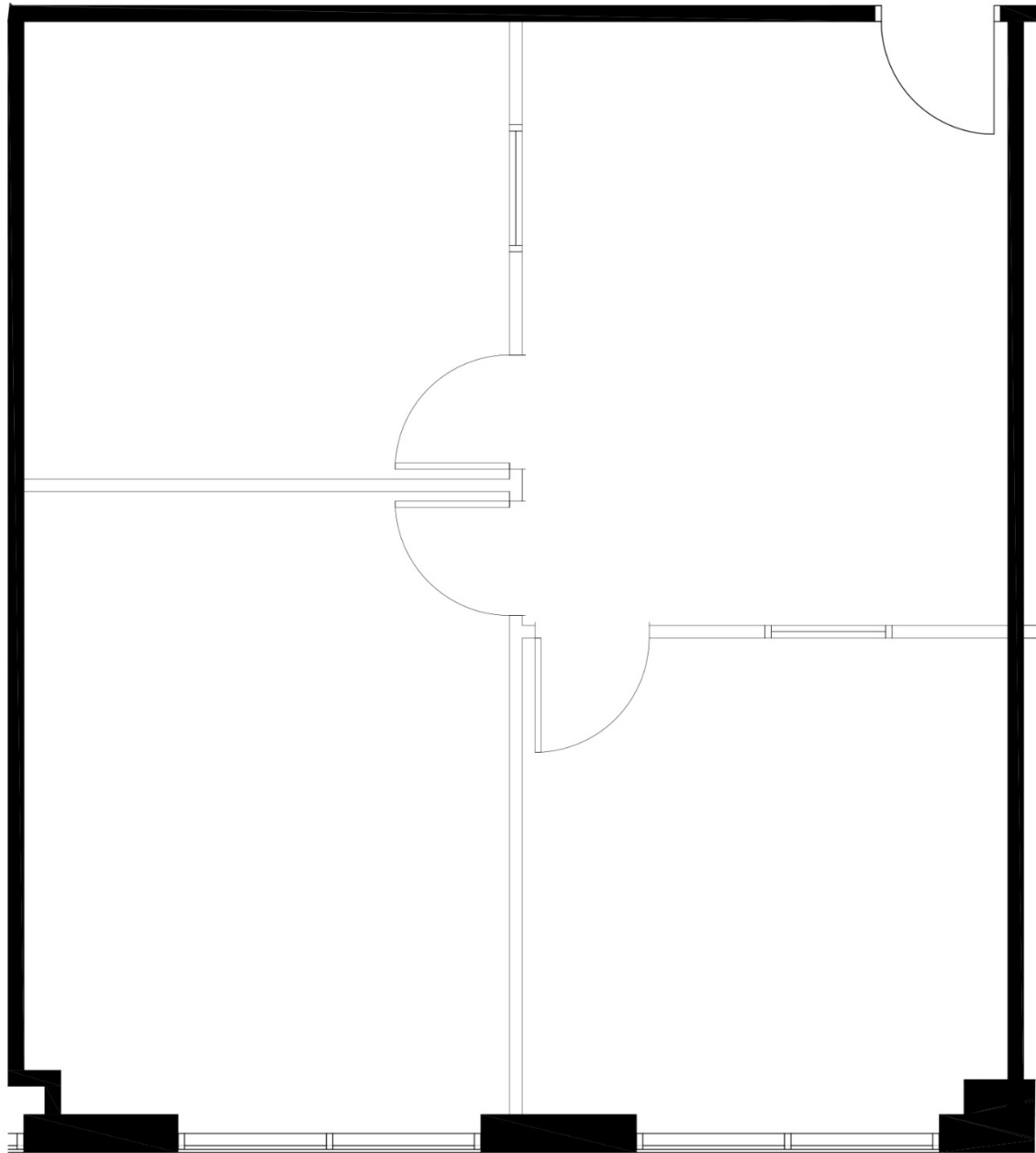
RYAN RUSSELL | 909.942.4697
Director
ryan.russell@cushwake.com
Lic. # 01505274

Cushman & Wakefield of CA, Inc.
21680 Gateway Center Dr., Suite 310
Diamond Bar, CA 91765
Lic. # 00616335

GATEWAY CORPORATE CENTER

1370 Valley Vista Drive, Diamond Bar, California

SUITE	RSF	DESCRIPTION
220	892	2 offices, 1 conference room, open cubicle area



For leasing information, please contact:

SEAN KERN | 909.942.4691
Senior Director
sean.kern@cushwake.com
Lic. #01377294

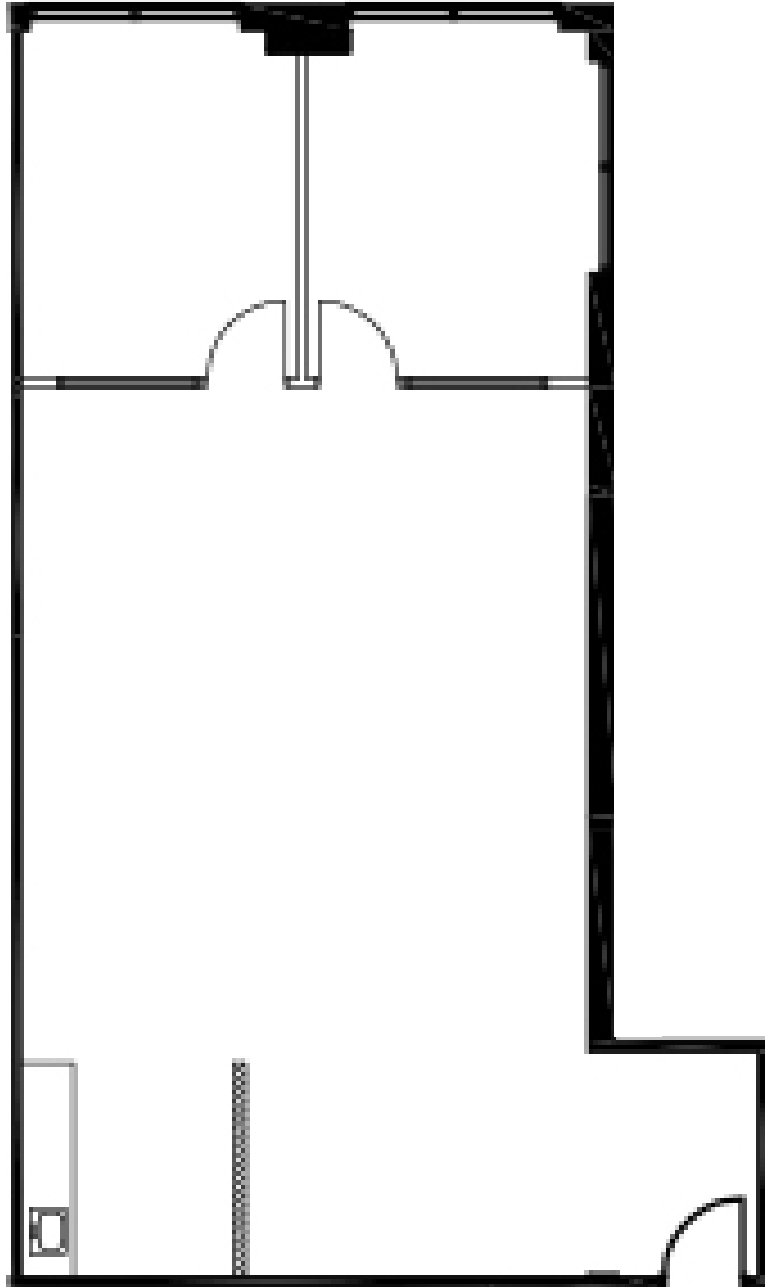
RYAN RUSSELL | 909.942.4697
Director
ryan.russell@cushwake.com
Lic. # 01505274



GATEWAY CORPORATE CENTER

1370 Valley Vista Drive, Diamond Bar, California

SUITE	RSF	DESCRIPTION
268	1,260	Available 5/10/2020



For leasing information, please contact:

SEAN KERN | 909.942.4691
Senior Director
sean.kern@cushwake.com
Lic. #01377294

RYAN RUSSELL | 909.942.4697
Director
ryan.russell@cushwake.com
Lic. # 01505274

