

# Crossroads Business Park IV

8050 SW 10th Street | Plantation, FL 33324



## Property Highlights

- 95,251 sf, four-story office building
- Easy access to I-595 via Pine Island Road or University Drive
- Parking Ratio 5.0/1,000 sf
- Convenient Central Broward County location
- Efficient space planning
- On-site mail and overnight carrier dropboxes
- Walking distance to hotels, restaurants, and banking

**Property Video**

**Greg Martin**, Principal  
D 954 903 3900  
greg.martin@avisonyoung.com

**Justin Cope**, Principal  
D 954 903 3701  
justin.cope@avisonyoung.com

**Lisa Blumer**, Senior Associate  
D 954 903 3703  
lisa.blumer@avisonyoung.com

500 W Cypress Creek Road  
Suite 550  
Fort Lauderdale, FL 33309

# Crossroads Business Park IV

8050 SW 10th Street | Plantation, FL 33324



## Availability

- Suite 1800: 5,996 sf \*

*\* Available 7/1/2020*

## Rental Rate

- \$24.00 NNN

## Operating Expenses

- \$12.54

---

**Greg Martin**, Principal  
D 954 903 3900  
greg.martin@avisonyoung.com

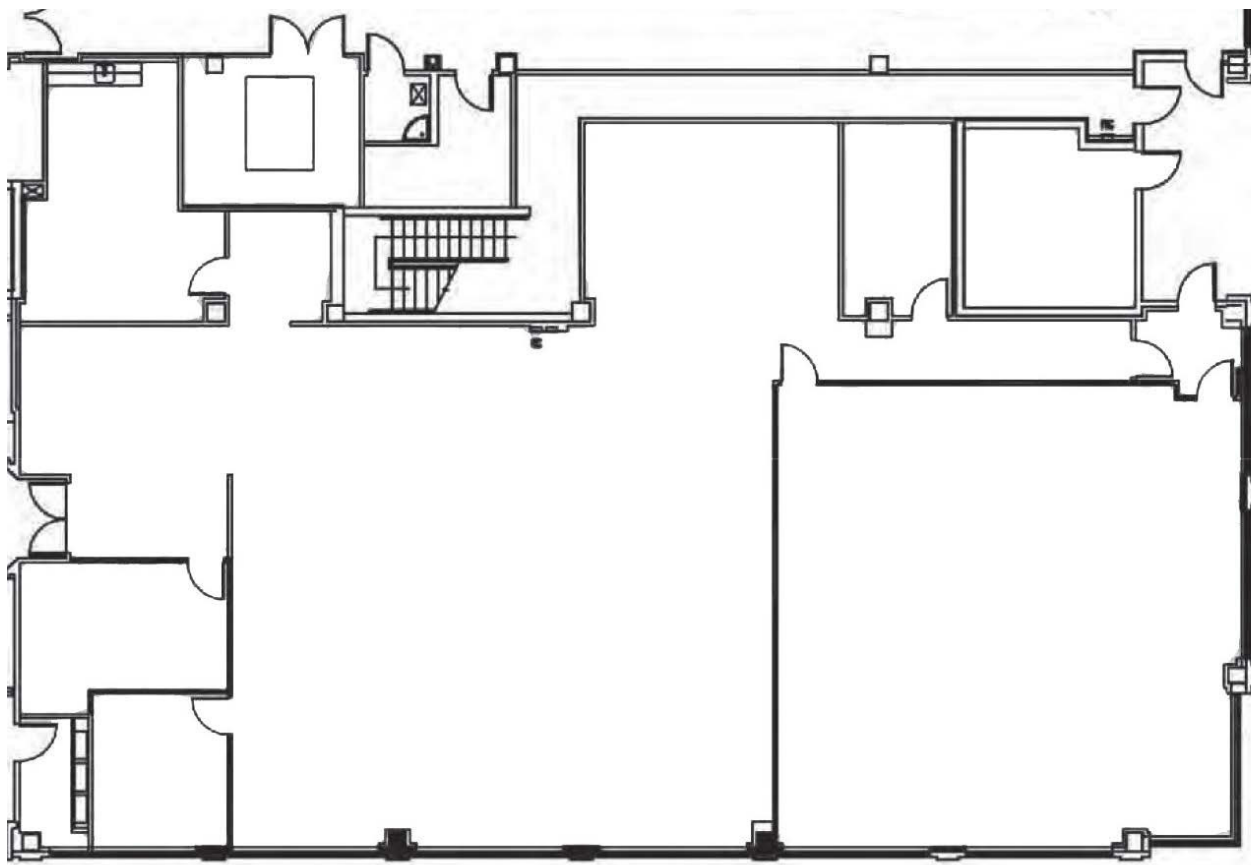
**Justin Cope**, Principal  
D 954 903 3701  
justin.cope@avisonyoung.com

**Lisa Blumer**, Senior Associate  
D 954 903 3703  
lisa.blumer@avisonyoung.com

500 W Cypress Creek Road  
Suite 550  
Fort Lauderdale, FL 33309



## **Suite 1800 - 5,996 sf** *Available 7/1/2020*



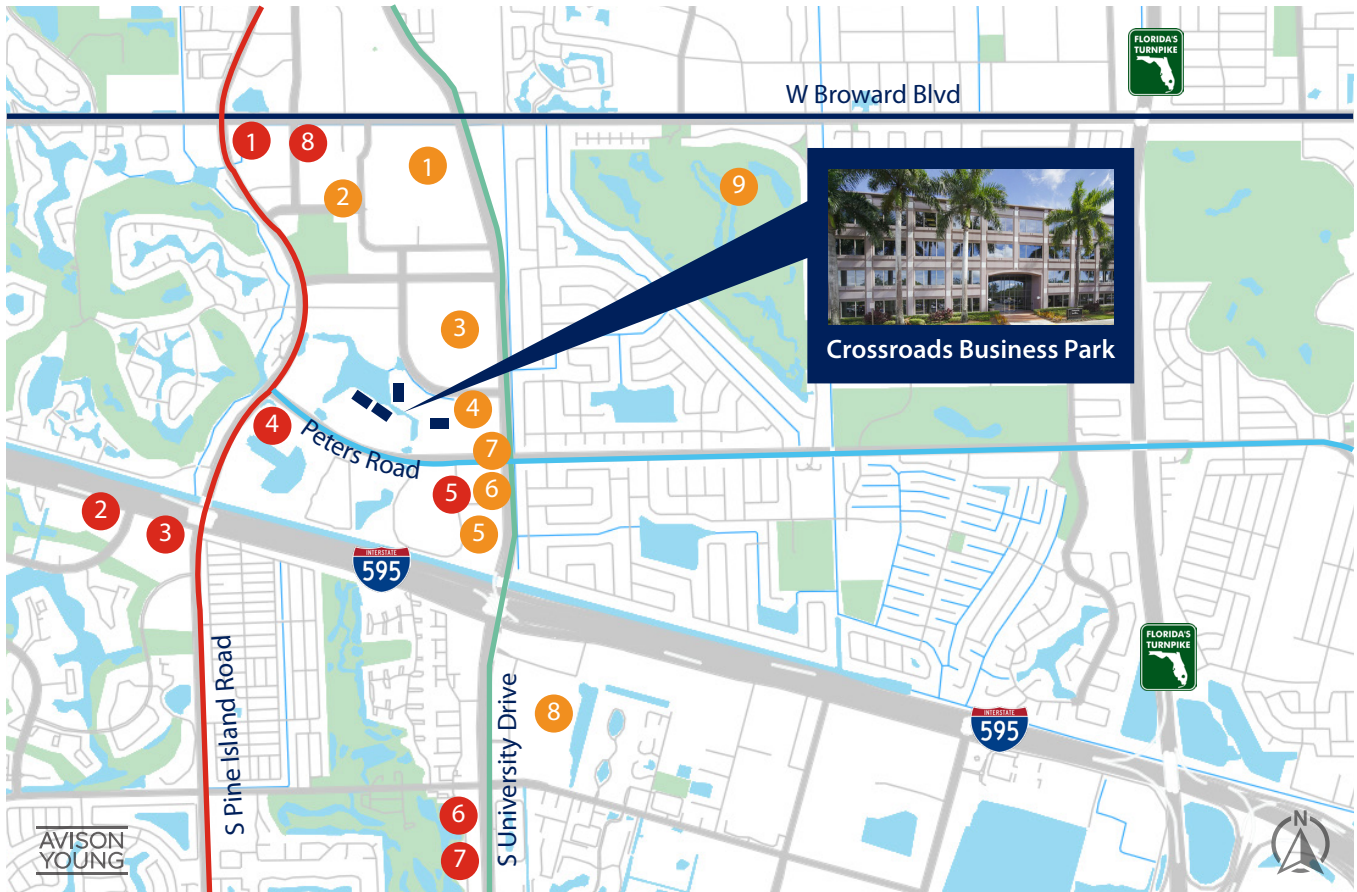
**Greg Martin**, Principal  
D 954 903 3900  
greg.martin@avisonyoung.com

**Justin Cope**, Principal  
D 954 903 3701  
justin.cope@avisonyoung.com

**Lisa Blumer**, Senior Associate  
D 954 903 3703  
lisa.blumer@avisonyoung.com

500 W Cypress Creek Road  
Suite 550  
Fort Lauderdale, FL 33309

## Property Location



### RESTAURANTS

- 1 J Alexander's
- 2 Dunkin' Donuts
- 3 Azteca Mexican
- 4 Bokampers
- 5 First Watch
- 6 Panera
- 7 Outback
- 8 Friday's

### MISCELLANEOUS

- 1 Westfield Broward Mall
- 2 Target
- 3 The Fountains - Plantation
- 4 Publix
- 5 Fedex Print & Ship
- 6 Bank of America
- 7 Wells Fargo
- 8 Tower Shops
- 9 Plantation Preserve Golf Course & Club

**Greg Martin**, Principal  
D 954 903 3900  
greg.martin@avisonyoung.com

**Justin Cope**, Principal  
D 954 903 3701  
justin.cope@avisonyoung.com

**Lisa Blumer**, Senior Associate  
D 954 903 3703  
lisa.blumer@avisonyoung.com

500 W Cypress Creek Road  
Suite 550  
Fort Lauderdale, FL 33309