

WAREHOUSE-OFFICE BUILDING | 1702 East 123rd Terrace, Olathe, KS 66061



- + Owner-occupant
- + 12,347 SF warehouse-office building on 1.17 acre lot
- + Includes 1,600 SF office
- + 100% air conditioned/heated with exhaust fans and ceiling fans
- + Clear span area: 135' x 70' with 18' of clearance
- + Two 12' x 12' bay doors
- + 48 parking spaces
- + Upper mezzanine
- + Reception area
- + Viewing/break room area
- + 400 amp 3 phase power
- + Wet sprinkler system
- + Upgraded fire alarm system
- + Security system with interior/exterior cameras
- + Zoned M2, Industrial with an assembly usage
- + Google Fiber on site

SALE PRICE: \$1,150,000

Lynn Holcomb, SIOR
lholcomb@fishmancommercial.com
913.747.3301 O | 816.289.1526 C

Ryan Holcomb
rholcomb@fishmancommercial.com
913.747.3321 O | 913.526.2904 C



WAREHOUSE-OFFICE BUILDING | 1702 East 123rd Terrace, Olathe, KS 66061

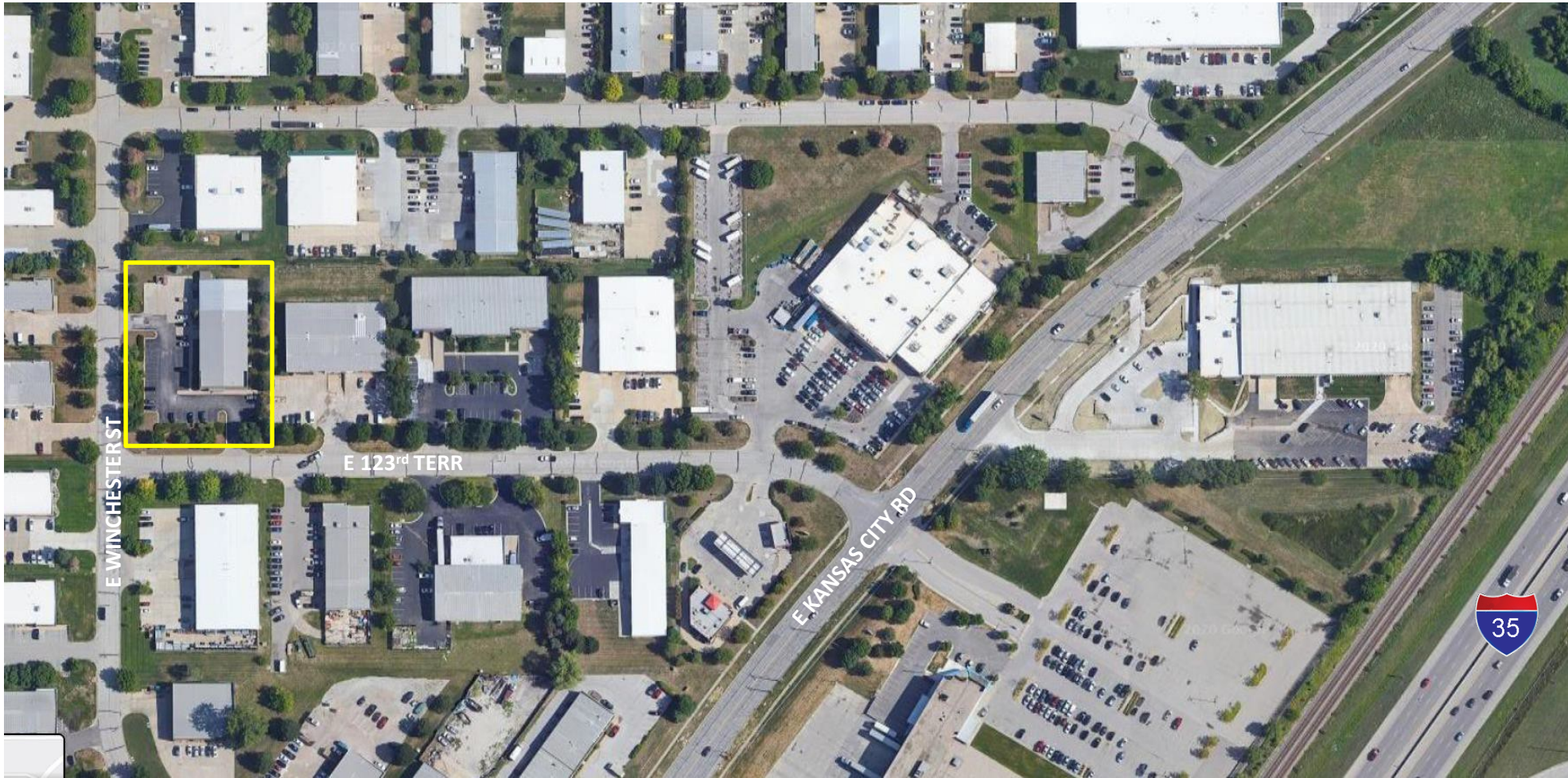


Lynn Holcomb, SIOR
lholcomb@fishmancommercial.com
913.747.3301 O | 816.289.1526 C

Ryan Holcomb
rholcomb@fishmancommercial.com
913.747.3321 O | 913.526.2904 C



WAREHOUSE-OFFICE BUILDING | 1702 East 123rd Terrace, Olathe, KS 66061



Lynn Holcomb, SIOR
lholcomb@fishmancommercial.com
913.747.3301 O | 816.289.1526 C

Ryan Holcomb
rholcomb@fishmancommercial.com
913.747.3321 O | 913.526.2904 C

