

FOR LEASE > OFFICE SPACE
12000 NE 8th Street, Bellevue, WA 98005

ERAGEM OFFICE BUILDING



BUILDING FEATURES

- > Highly visible location on NE 8th Street with excellent access to I-405
- > Free surface parking at a ratio of 2.5/1,000 SF
- > Walking distance to Whole Foods, Starbucks, Uwajimaya, The Pumphouse and many other retail amenities
- > Potential uses for Suite 102 include: software/video game development, video production, warehouse/storage, call center
- > New finishes and building improvements (space does not have windows)

AVAILABLE SPACE

Suite	Size (SF)	Rental Rate	Availability
102	1,517	\$20.00 \$15.00/SF, Full Service	Immediately



Contact Information:

Sam Ziemba
425 468 0706
sam.ziemba@colliers.com

Pat Mutzel
425 453 3142
pat.mutzel@colliers.com

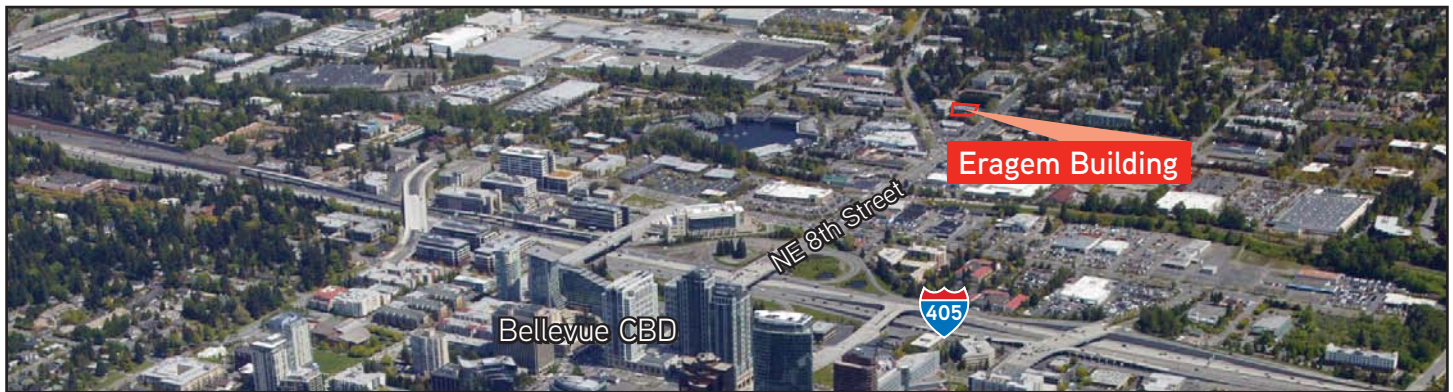
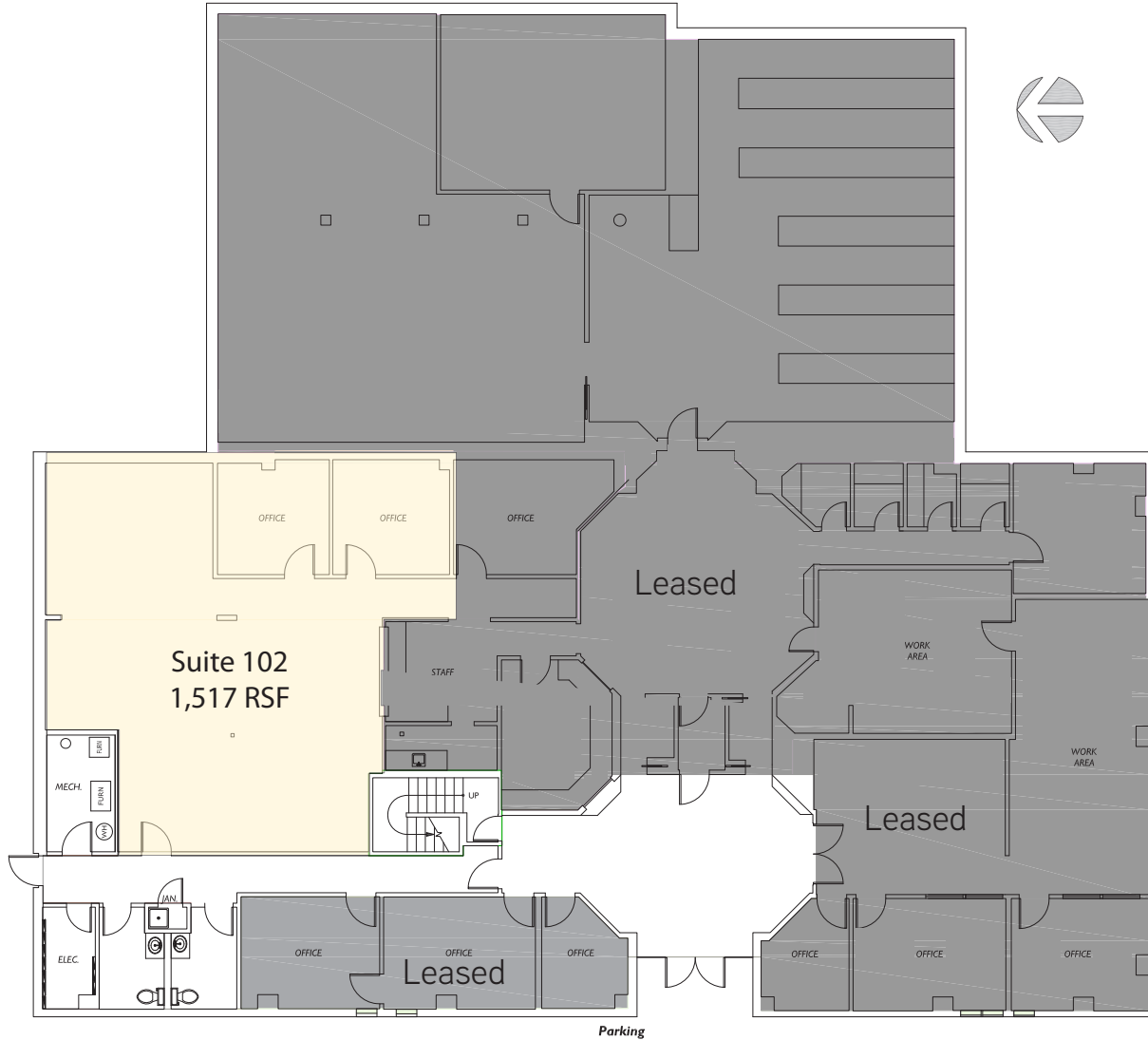


COLLIERS INTERNATIONAL
11225 SE 6th Street, Suite 240
Bellevue, WA 98104
425 453 4545 | www.colliers.com

FOR LEASE > ERAGEM OFFICE BUILDING

12000 NE 8th Street, Bellevue, WA 98005

FIRST FLOOR - FLOOR PLAN



This document has been prepared by Colliers International for advertising and general information only. Colliers International makes no guarantees, representations or warranties of any kind, expressed or implied, regarding the information including, but not limited to, warranties of content, accuracy and reliability. Any interested party should undertake their own inquiries as to the accuracy of the information. Colliers International excludes unequivocally all inferred or implied terms, conditions and warranties arising out of this document and excludes all liability for loss and damages arising there from. This publication is the copyrighted property of Colliers International and /or its licensor(s). © 2014. All rights reserved.



COLLIERS INTERNATIONAL
11225 SE 6th Street, Suite 240
Bellevue, WA 98104
425 453 4545 | www.colliers.com