

Medical Office Building

239 Ash Street Tipton, IN 46072

Medical Office

5,250 SF



Keith Dedrick CCIM, SIOR
keith@ccgbrokers.com
317-502-3622

Corporate Commercial Group
11495 N Pennsylvania Street Ste. 225
Carmel, IN 46032



Property Details

239 Ash Street Tipton, IN 46072

Lease Rate:	\$15.00/SF NNN
Available Space:	+/- 1,800 SF to +/- 5,250 SF
Total Acreage:	0.61 Acres
Total Buildings SF:	+/- 5,250 SF
Year Built:	1989
Parcel ID :	80-11-12-200-006.020-002
Annual Property Tax:	\$4,849
Building Type:	Office
County:	Tipton



Photos - Exterior



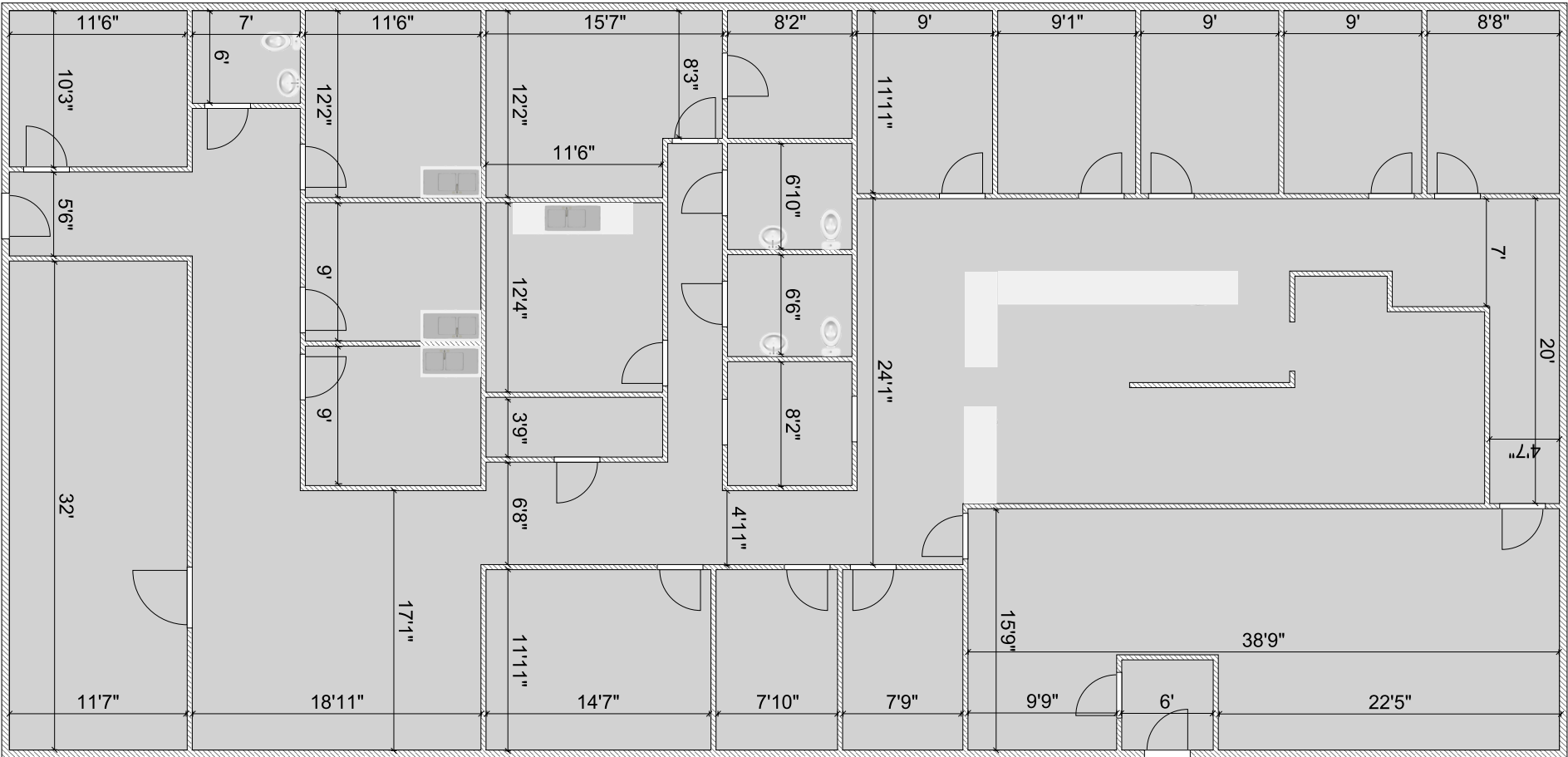
Photos - Interior



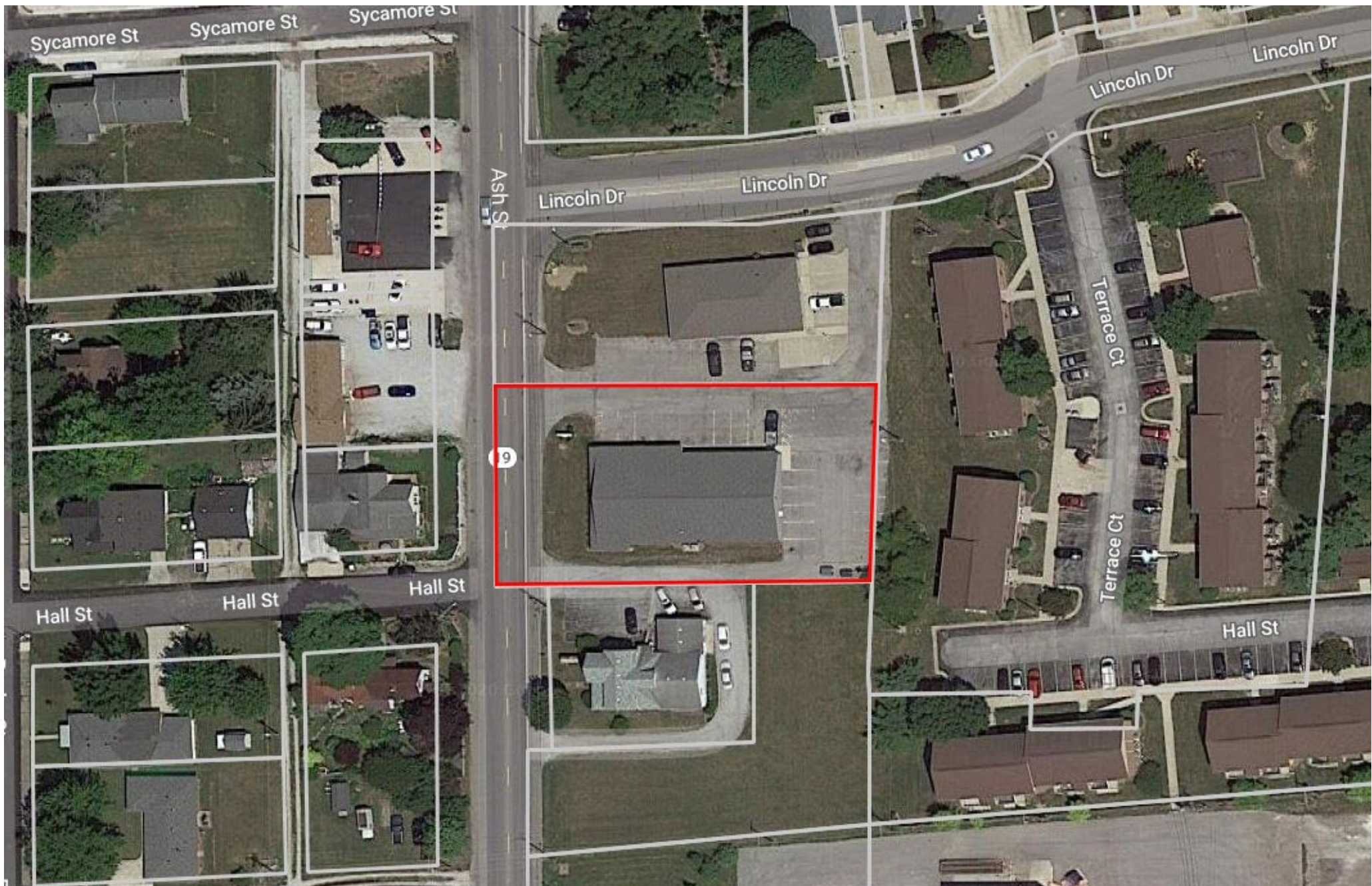
Photos - Interior



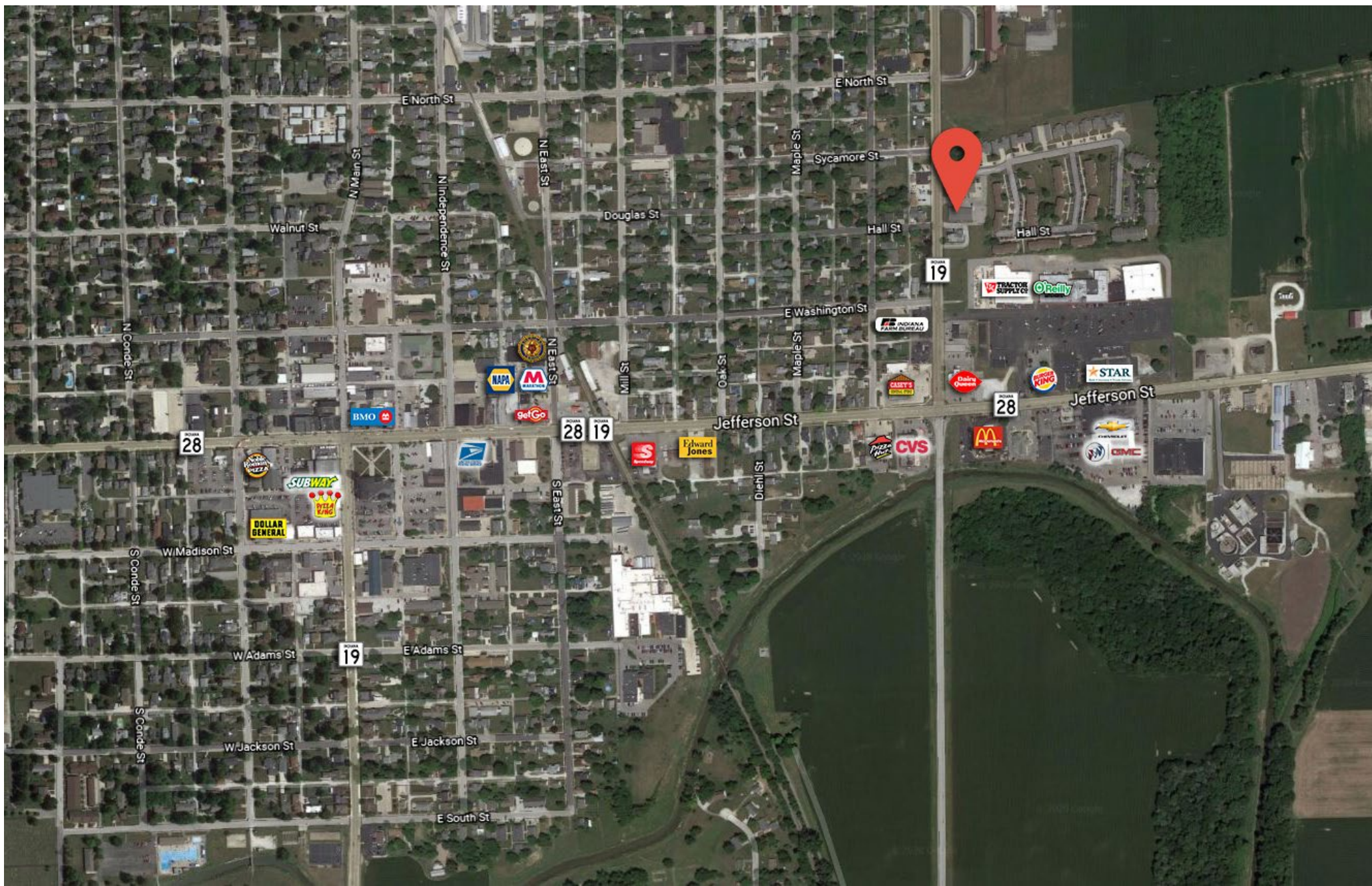
Layout



Site Plan



Location Overview



Location Overview

