



**PREMIER
PROPERTIES**
COMMERCIAL
REAL ESTATE

FOR LEASE

2741 MIDDLEFIELD ROAD

Palo Alto, CA

±2,906 Sq. Ft. Office



BRAD EHIKIAN

Partner
dre license #01736391
📞 | 650.618.3001
✉ | brad.ehikian@prprop.com

JON GOLDMAN

Partner
dre license #01295503
📞 | 650.618.3003
✉ | jon.goldman@prprop.com

JESSE EBNER

Associate
dre license #02055989
📞 | 650.618.3017
✉ | jesse.ebner@prprop.com

PROPERTY DESCRIPTION

- Large, Open Layout
- Excellent Window Line
- Located in Midtown Palo Alto Center
- Shared Kitchenette and Restrooms
- 3 Reserved Parking Spaces
- Adjacent to Public City Parking Lot
- Easy Access to Oregon Expressway & HWY 101
- Available September 1, 2020



**PREMIER
PROPERTIES**
COMMERCIAL
REAL ESTATE

BRAD EHIKIAN

Partner
dre license #01736391
📞 | 650.618.3001
✉ | brad.ehikian@prprop.com

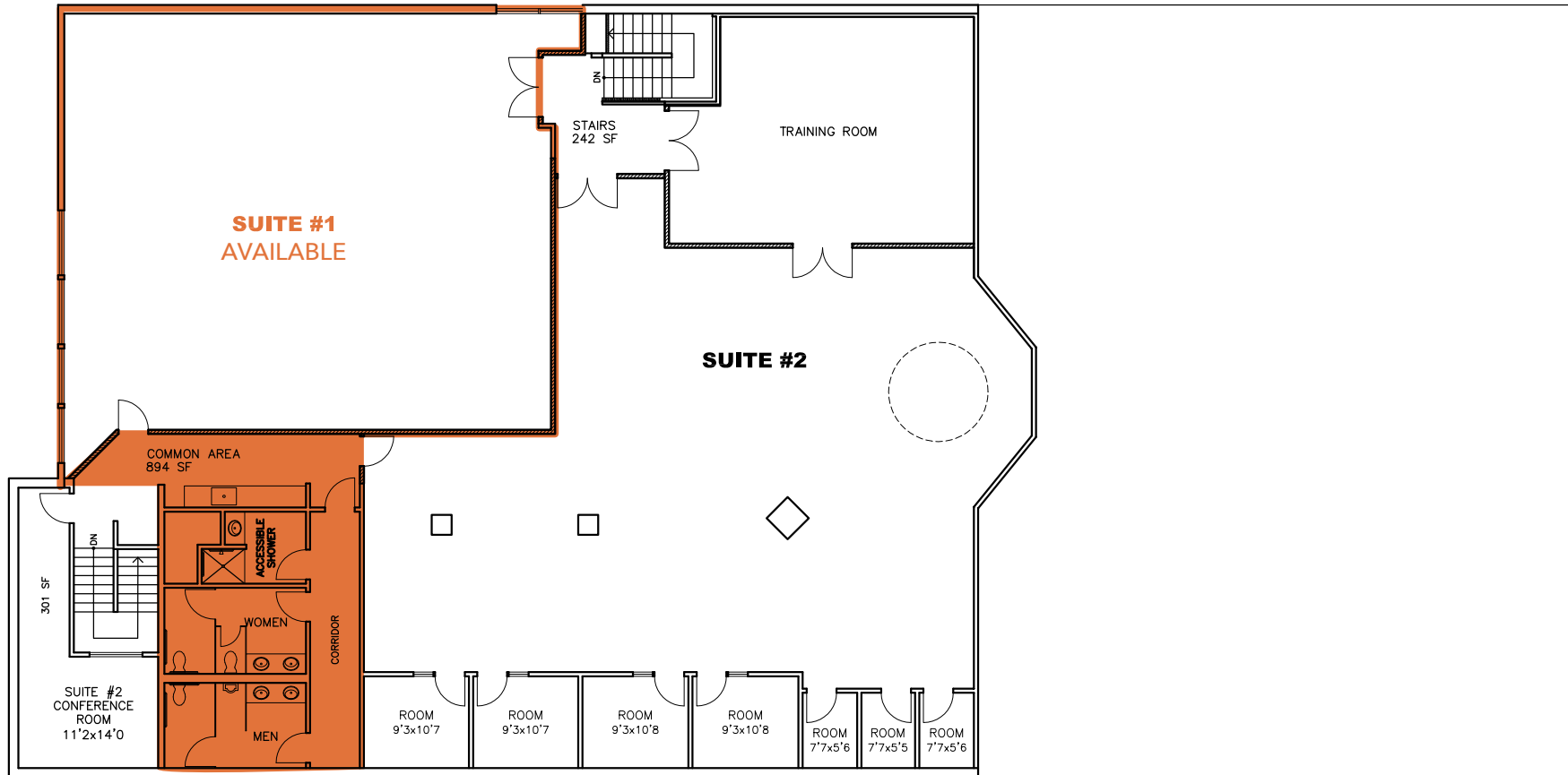
JON GOLDMAN

Partner
dre license #01295503
📞 | 650.618.3003
✉ | jon.goldman@prprop.com

JESSE EBNER

Associate
dre license #02055989
📞 | 650.618.3017
✉ | jesse.ebner@prprop.com

FLOOR PLAN



Shared Restrooms & Kitchenette

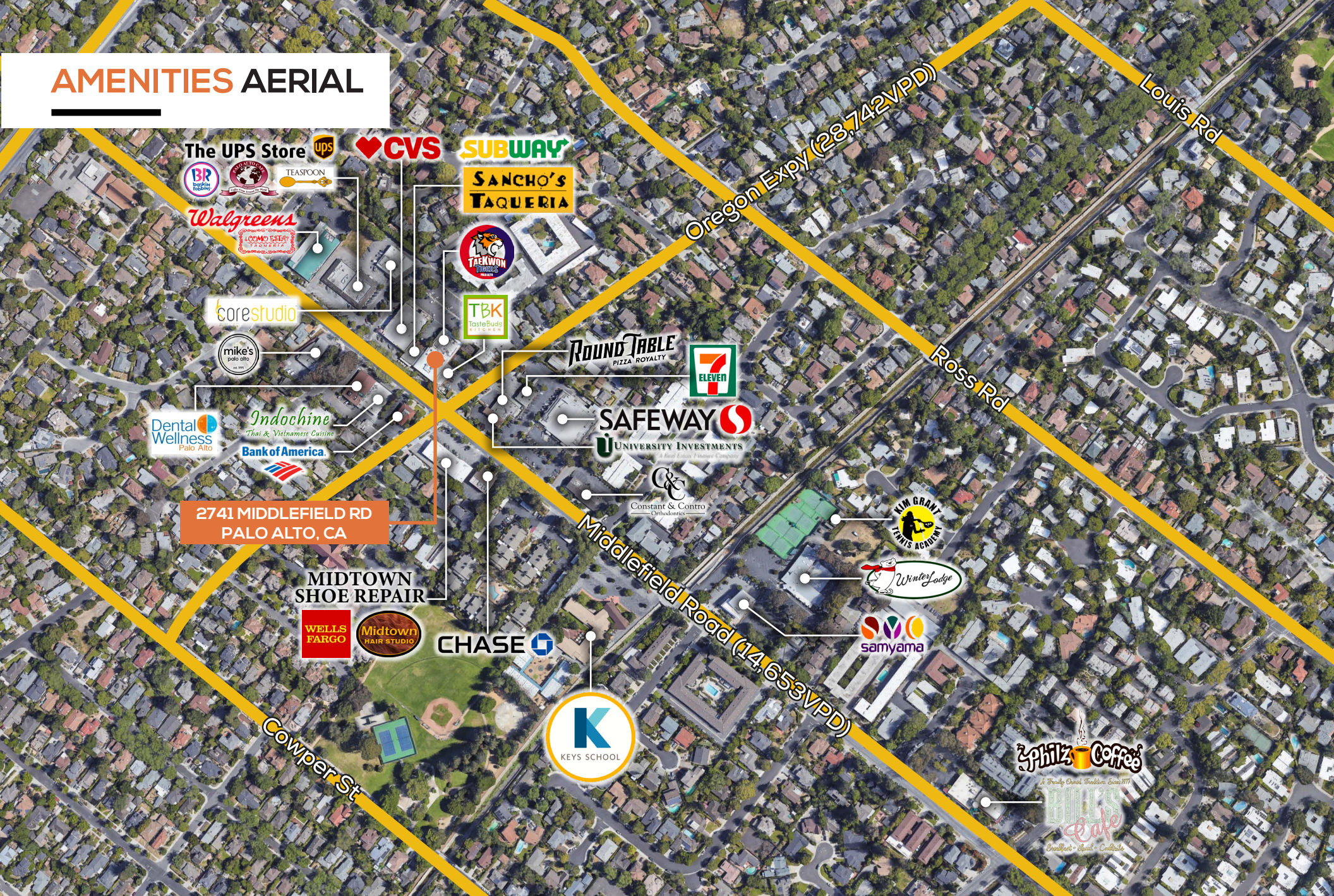


BRAD EHIKIAN
Partner
dre license #01736391
☎ | 650.618.3001
✉ | brad.ehikian@prprop.com

JON GOLDMAN
Partner
dre license #01295503
☎ | 650.618.3003
✉ | jon.goldman@prprop.com

JESSE EBNER
Associate
dre license #02055989
☎ | 650.618.3017
✉ | jesse.ebner@prprop.com

AMENITIES AERIAL



2741 MIDDLEFIELD RD
PALO ALTO, CA

MIDTOWN
SHOE REPAIR

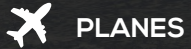


BRAD EHIKIAN
Partner
dre license #01736391
☎ | 650.618.3001
✉ | brad.ehikian@prprop.com

JON GOLDMAN
Partner
dre license #01295503
☎ | 650.618.3003
✉ | jon.goldman@prprop.com

JESSE EBNER
Associate
dre license #02055989
☎ | 650.618.3017
✉ | jesse.ebner@prprop.com

TRANSPORTATION AERIAL



PLANES

SJC - 18 miles
SFO - 18 miles
OAK - 28 miles



TRAINS

San Francisco - 1 h 4 min
Milbrae - 36 min
San Jose - 45 min



AUTOMOBILES

San Francisco - 31 miles
Downtown San Jose - 21 miles
Downtown Oakland - 34 miles

Downtown Redwood City

Menlo Park

Downtown Menlo Park

Downtown Palo Alto

San Francisco International Airport

Caltrain

Embarcadero Rd

Palo Alto

Old Palo Alto

Oregon Expy

Midtown

California Ave Business District

**2741 MIDDLEFIELD RD
PALO ALTO, CA**

101

Bayshore Fwy
(227,900 VPD)

El Camino Real

Alma St. (34,700 VPD)

Middlefield Road (14,653 VPD)



BRAD EHIKIAN
Partner
dre license #01736391
☎ | 650.618.3001
✉ | brad.ehikian@prprop.com

JON GOLDMAN
Partner
dre license #01295503
☎ | 650.618.3003
✉ | jon.goldman@prprop.com

JESSE EBNER
Associate
dre license #02055989
☎ | 650.618.3017
✉ | jesse.ebner@prprop.com

DEMOGRAPHICS



ONE-MILE POPULATION: 24,809

MEDIAN AGE

43.2

MEDIAN NET WORTH



FAMILIES



PER CAPITA
INCOME

\$89,403



Average Household Income

\$238,820

Average Household Size: 2.66

Owner Occupied Housing Units: 5,759

Renter Occupied Housing Units: 3,534

Median Household Income: \$188,333

MAJOR EMPLOYERS:

Data for all businesses in area	1 mile
Total Businesses:	884
Total Employees:	7,502
Total Residential Population:	24,809
Employee/Residential Population Ratio (per 100 Residents)	30



BRAD EHIKIAN
Partner
dre license #01736391
📞 | 650.618.3001
✉ | brad.ehikian@prprop.com

JON GOLDMAN
Partner
dre license #01295503
📞 | 650.618.3003
✉ | jon.goldman@prprop.com

JESSE EBNER
Associate
dre license #02055989
📞 | 650.618.3017
✉ | jesse.ebner@prprop.com