

OFFICE SPACE FOR LEASE

EXCLUSIVELY
REPRESENTED BY:

JOE LYNCH

Executive Managing Director
joe.lynych@ngkf.com
425.362.1399

DAN HARDEN

Senior Managing Director
dan.harden@ngkf.com
425.362.1393

NEWMARK



EST.  2015

THE VILLAGE

AT TOTEM LAKE

12520 Totem Lake Blvd NE | Kirkland, WA 98034

OFFICE SPACE FOR LEASE



Easy access to I-405
with a variety of
commuting
options



State-of-the-art,
mixed-use, lifestyle
center



Unique environment
offering a high
quality of life
experience



Highly desirable live,
work, play
location



Abundance of
walkable
amenities

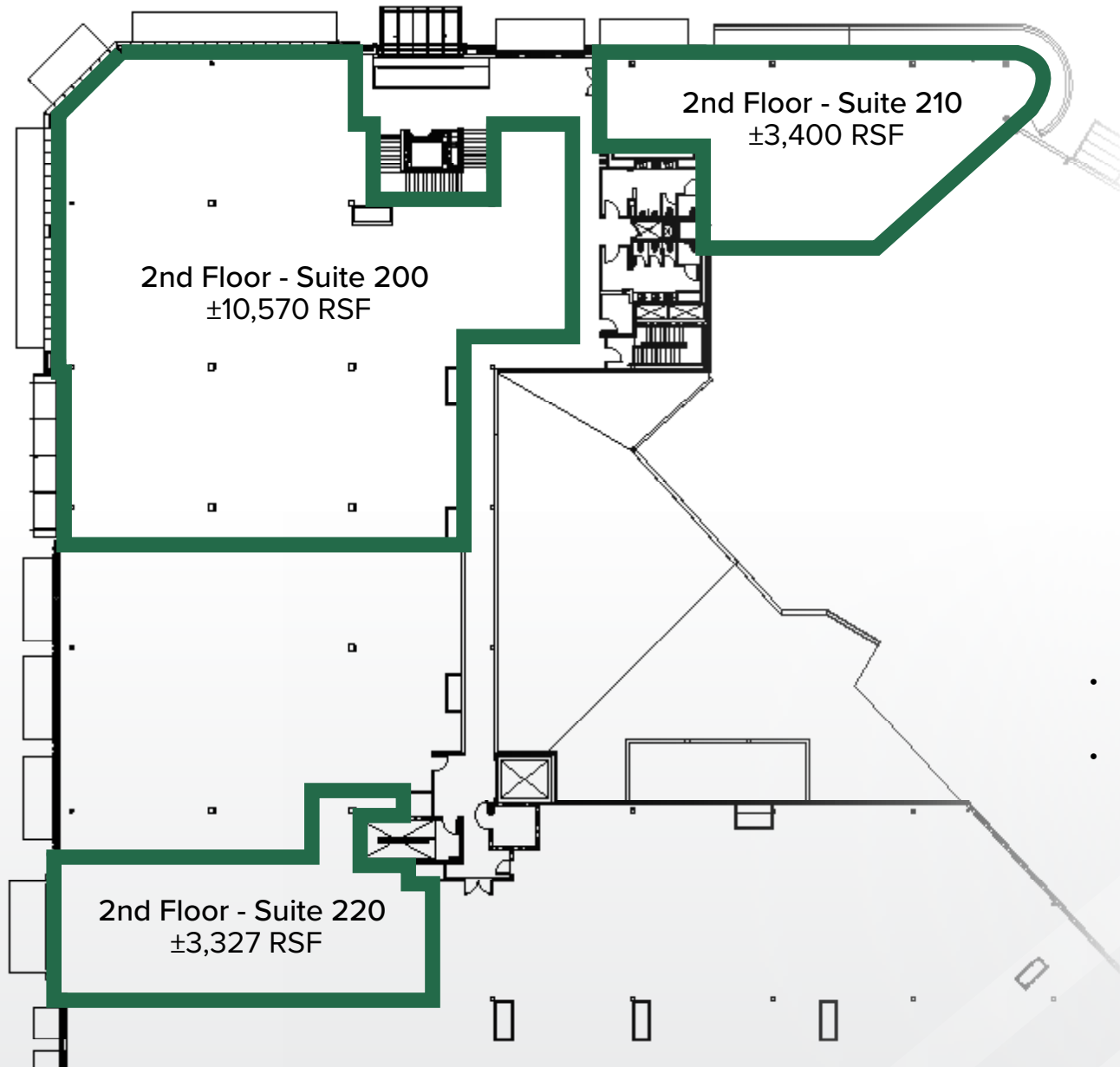


The Village at Totem Lake located in Kirkland, Washington consists of approximately 400,000 SF. Totem Lake is the redevelopment of a newly imagined lifestyle center complete with a village feel, mixed-use, gourmet grocery, high-end residential and other desirable experiences. While retaining several of the legacy tenants within the project, the development will also include a state-of-the-art luxury theatre, experiential restaurants, unique retail and other modern features.



EST.  2015
THE VILLAGE
AT TOTEM LAKE

FLOOR PLANS



\$48 FF

ASKING LEASE RATE

**NOW
AVAILABLE**

TO BEGIN TENANT
SHELL BUILD-OUT

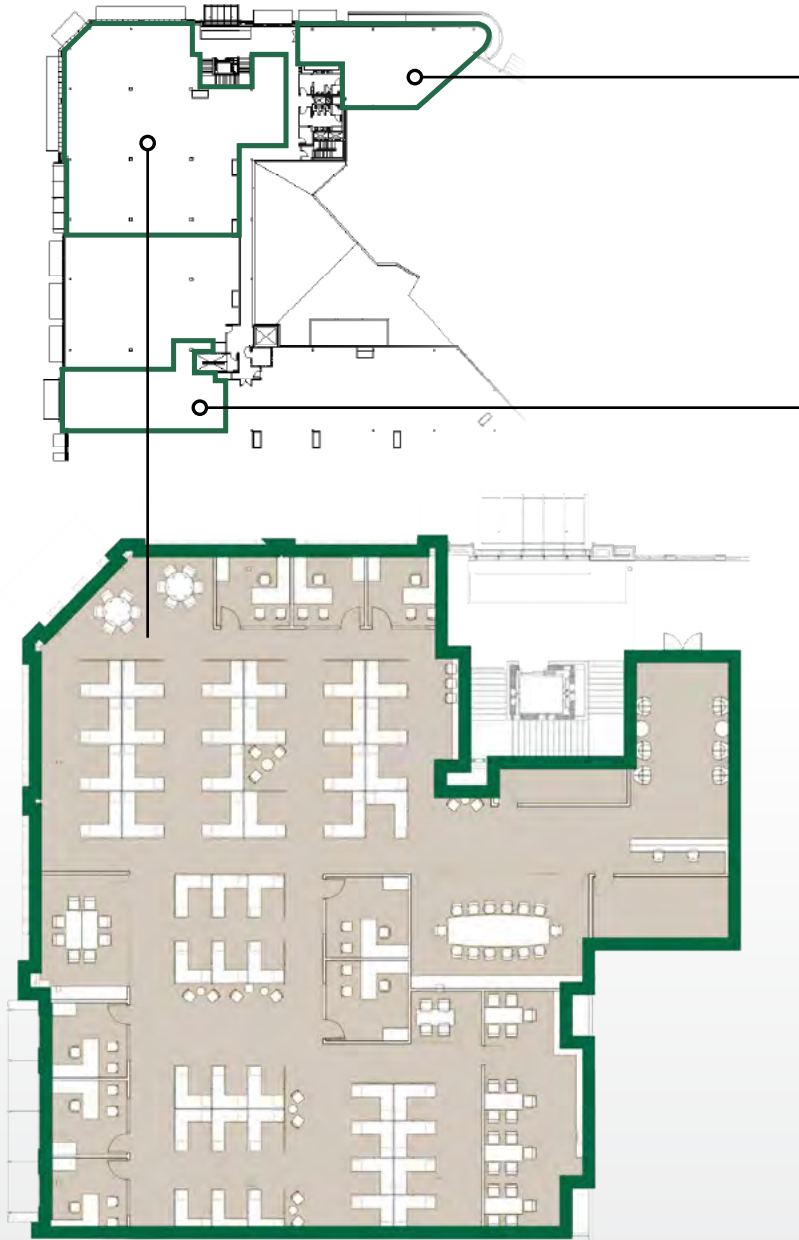
17,297

NET RENTABLE SF

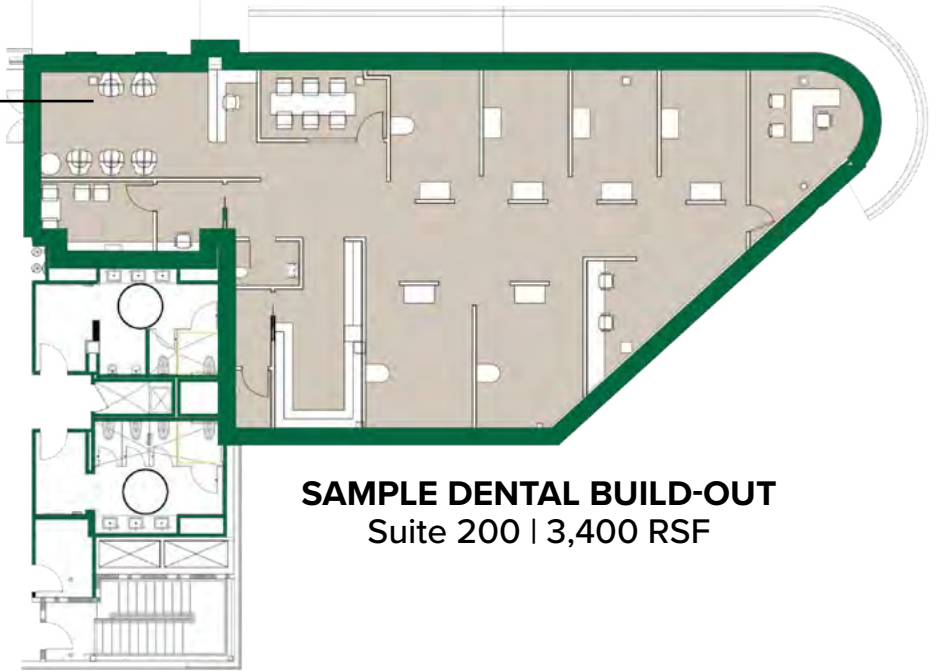
- Rate includes utilities, building services and property expenses
- Can be combined with additional space(s) for up to 13,970 SF of adjacent space

EST.  2015
THE VILLAGE
AT TOTEM LAKE

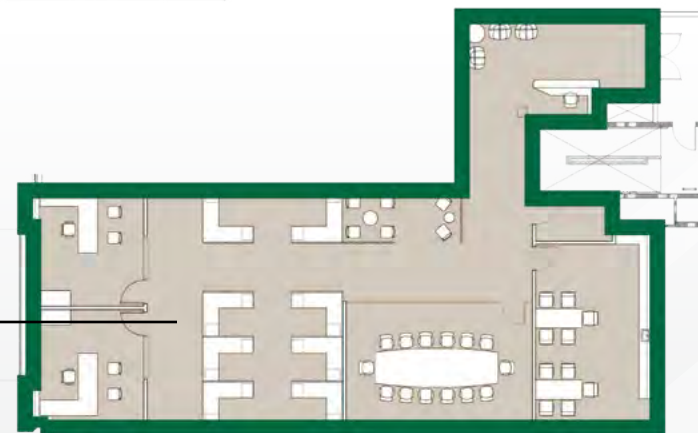
SAMPLE BUILD-OUTS



SAMPLE TECHNOLOGY BUILD-OUT
Suite 200 | 10,570 RSF

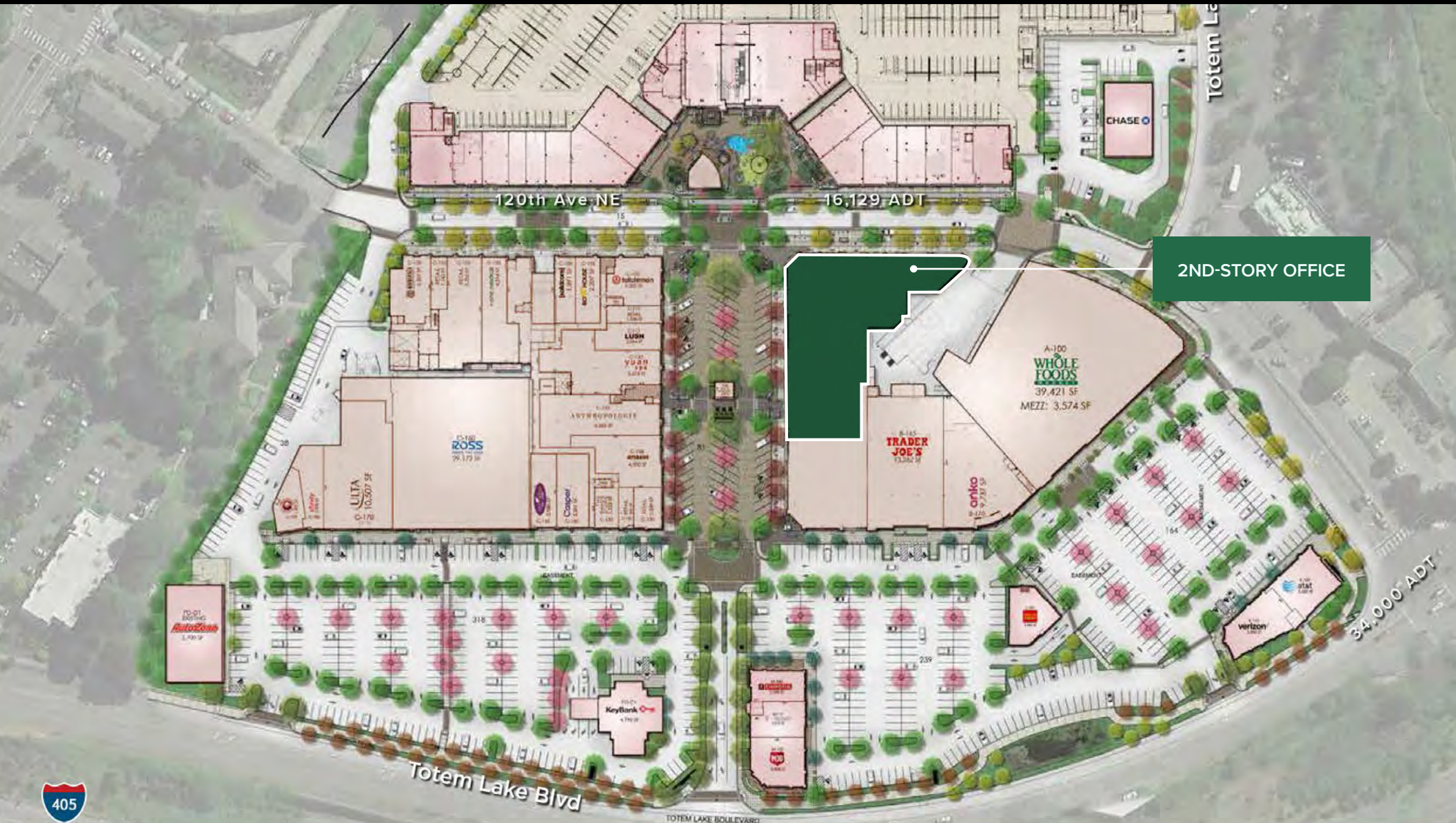


SAMPLE DENTAL BUILD-OUT
Suite 200 | 3,400 RSF



SAMPLE PROFESSIONAL BUILD-OUT
Suite 200 | 3,327 RSF

PROJECT OVERVIEW



NEWMARK

JOE LYNCH
Executive Managing Director
joe.lynych@ngkf.com
425.362.1399
10900 NE 4th St, Suite 1430 Bellevue, WA 98004

DAN HARDEN
Senior Managing Director
dan.harden@ngkf.com
425.362.1393

EST.  2015
THE VILLAGE
AT TOTEM LAKE