

Redwood Depot Industrial Park

1760-1830 West Redwood Depot Ln. / Salt Lake City, Utah

BUILDING E READY FOR TENANT IMPROVEMENTS



Property Highlights

- Up to 136,421 SF contiguous available
 - Building E: ±48,391 SF available (existing)
 - Building F: 136,421 SF (under construction)
- 12' x 14' grade level doors
- 9' x 10' dock high doors
- ESFR fire suppression
- Zoned Light Manufacturing
- ±380,000 SF Planned Phase II
- Situated in the heart of the industrial market between I-80, SR 201, I-15, and I-215
- Direct access to Redwood Road
- Within 5 minutes of Salt Lake International Airport

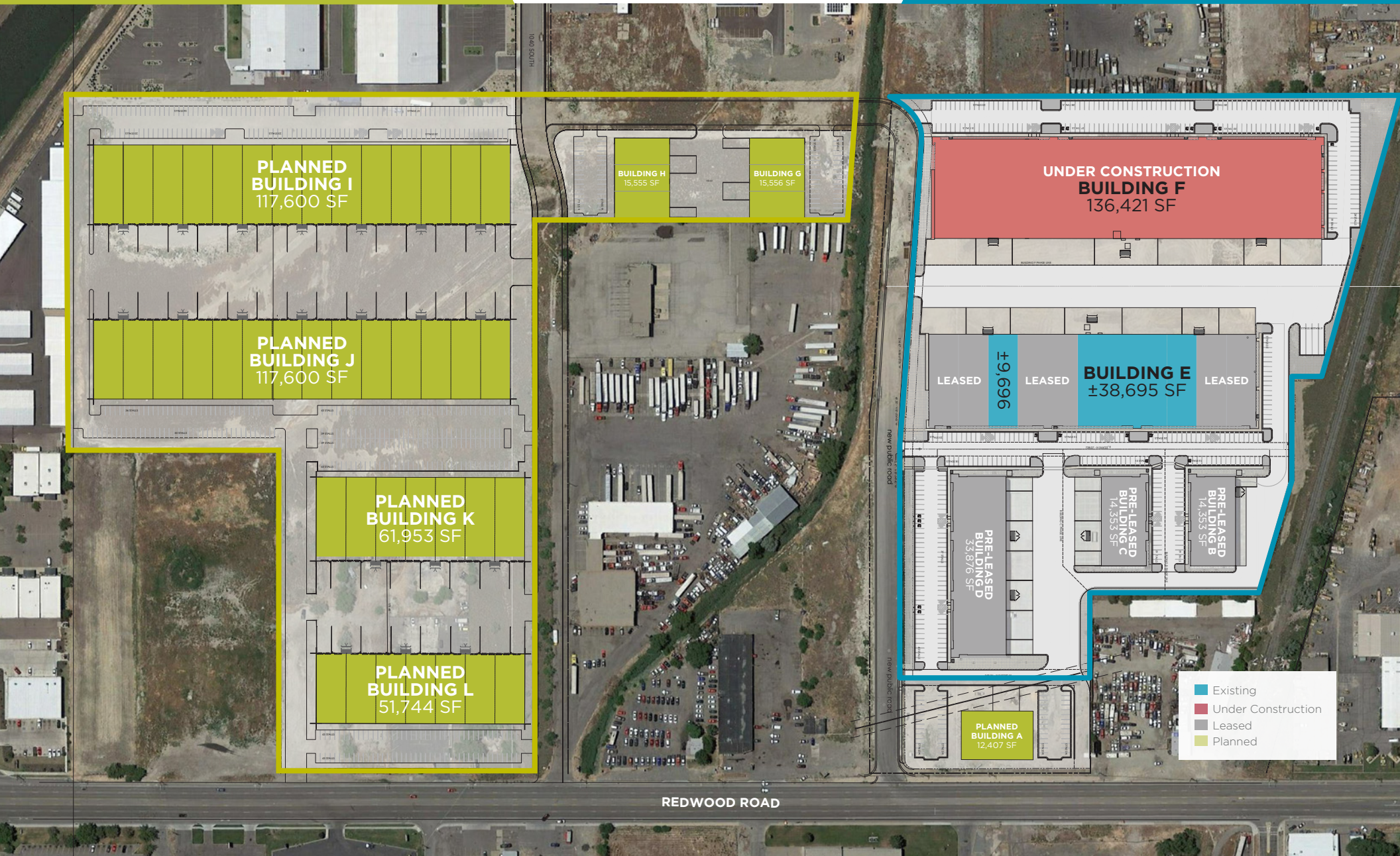
Tom Freeman, SIOR
Executive Director
+1 801 303 5449
tom.freeman@cushwake.com

Travis Healey, SIOR
Senior Director
+1 801 303 5565
travis.healey@cushwake.com

170 South Main Street, Suite 1600
Salt Lake City, UT 84101
Main +1 801 322 2000
Fax +1 801 322 2040
cushmanwakefield.com

PHASE 2: FUTURE DEVELOPMENT

PHASE 1: EXISTING



BUILDING E - 1810 WEST REDWOOD DEPOT LANE

- Building Size: 106,851 SF
- Available: $\pm 48,391$ SF
- Divisible to: $\pm 9,702$ SF OR $\pm 19,271$ SF
- Max Contiguous: $\pm 38,689$ SF
- Office: Finish to suit
- Clear Height: 32'
- Car Parking: 82 striped stalls allocated to building
- Power: 1,400 amps, 277/480 volt, 3-phase
- Typical Column Spacing: 56' x 37' (60' staging bay)
- Loading: (3) 12' x 14' grade level doors
(7) 9' x 10' dock high doors (expandable)
- Delivery Date: Construction Completed

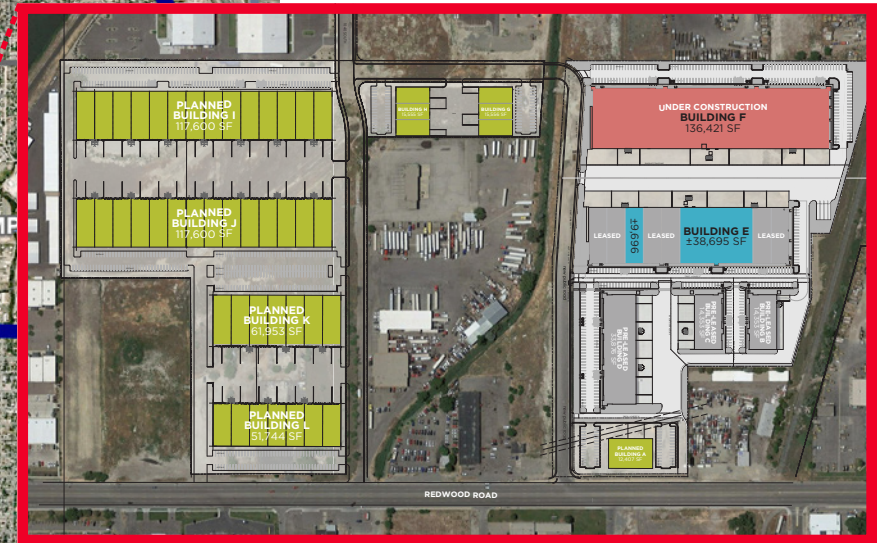
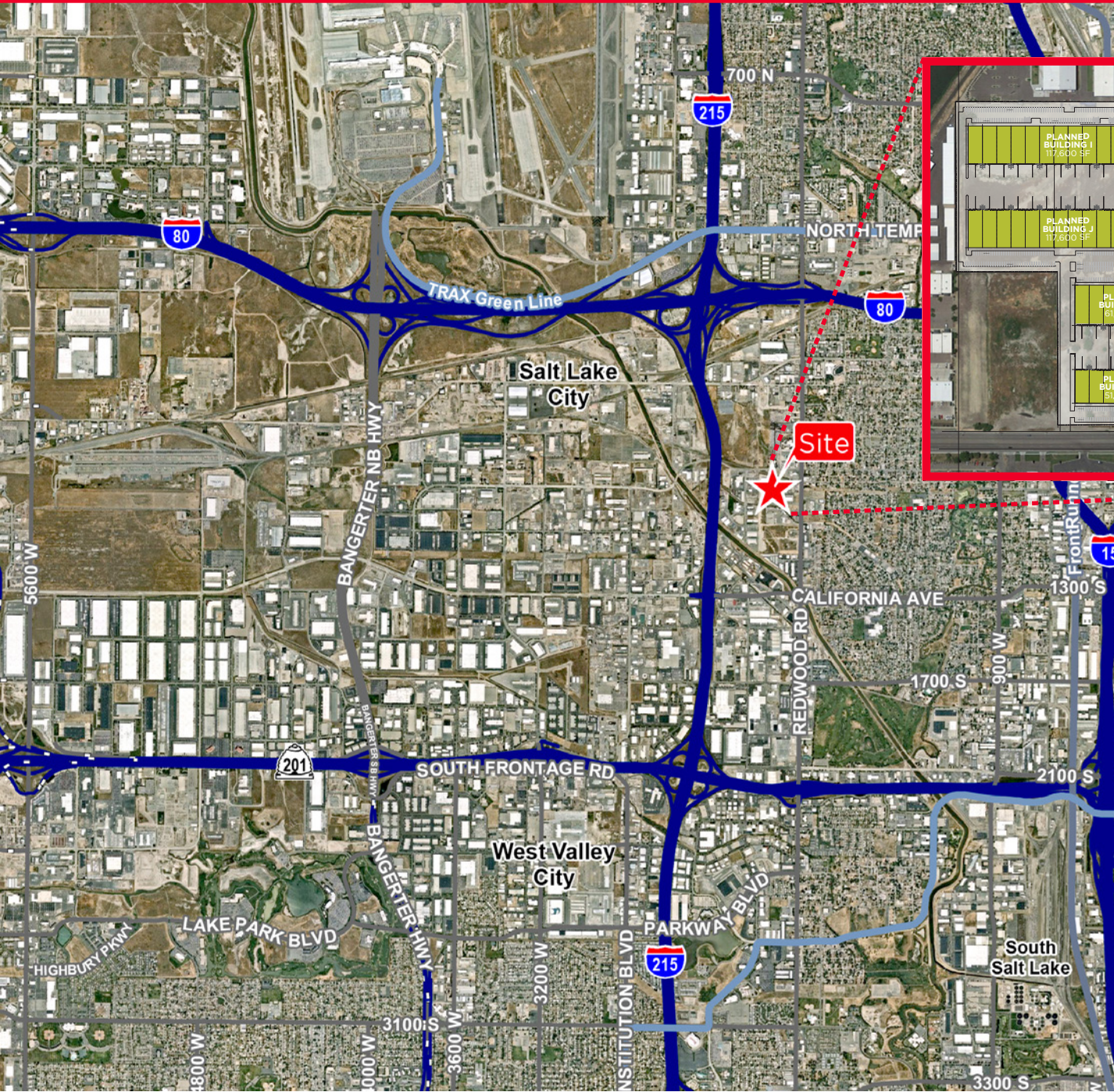
**BUILDING F - 1830 WEST REDWOOD DEPOT LANE**

- Building Size: 136,421 SF
- Available: 136,421 SF
- Divisible to: 21,069 SF
- Office: Finish to suit
- Clear Height: 32'
- Car Parking: 194 striped stalls allocated to building
- Power: 2,500 amps, 277/480 volt, 3-phase
- Typical Column Spacing: 56' x 42' (61' staging area)
- Loading: (6) 12' x 14' grade level doors
(24) 9' x 10' dock high doors (expandable)
- Delivery Date: Slated for Q4 2019 completion



Redwood Depot Industrial Park

1760-1830 West Redwood Depot Ln. / Salt Lake City, Utah



Tom Freeman, SIOR
Executive Director
+1 801 303 5449
tom.freeman@cushwake.com

Travis Healey, SIOR
Senior Director
+1 801 303 5565
travis.healey@cushwake.com

170 South Main Street, Suite 1600
Salt Lake City, UT 84101
Main +1 801 322 2000
Fax +1 801 322 2040
cushmanwakefield.com