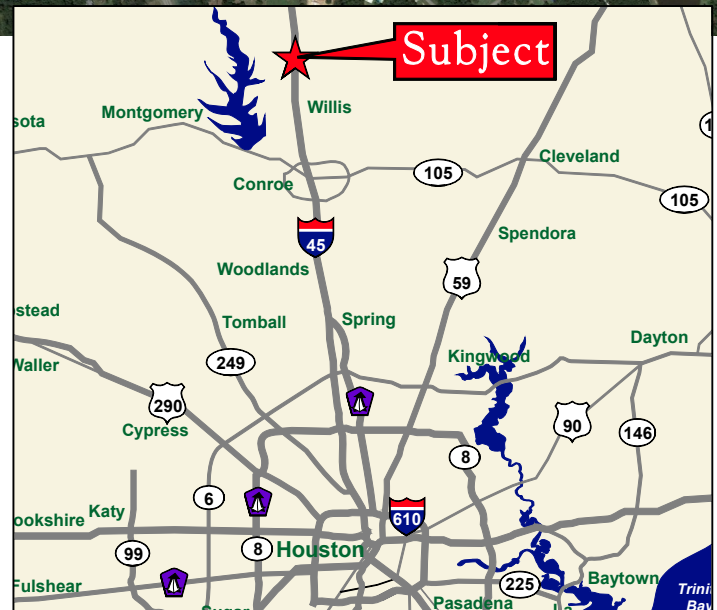
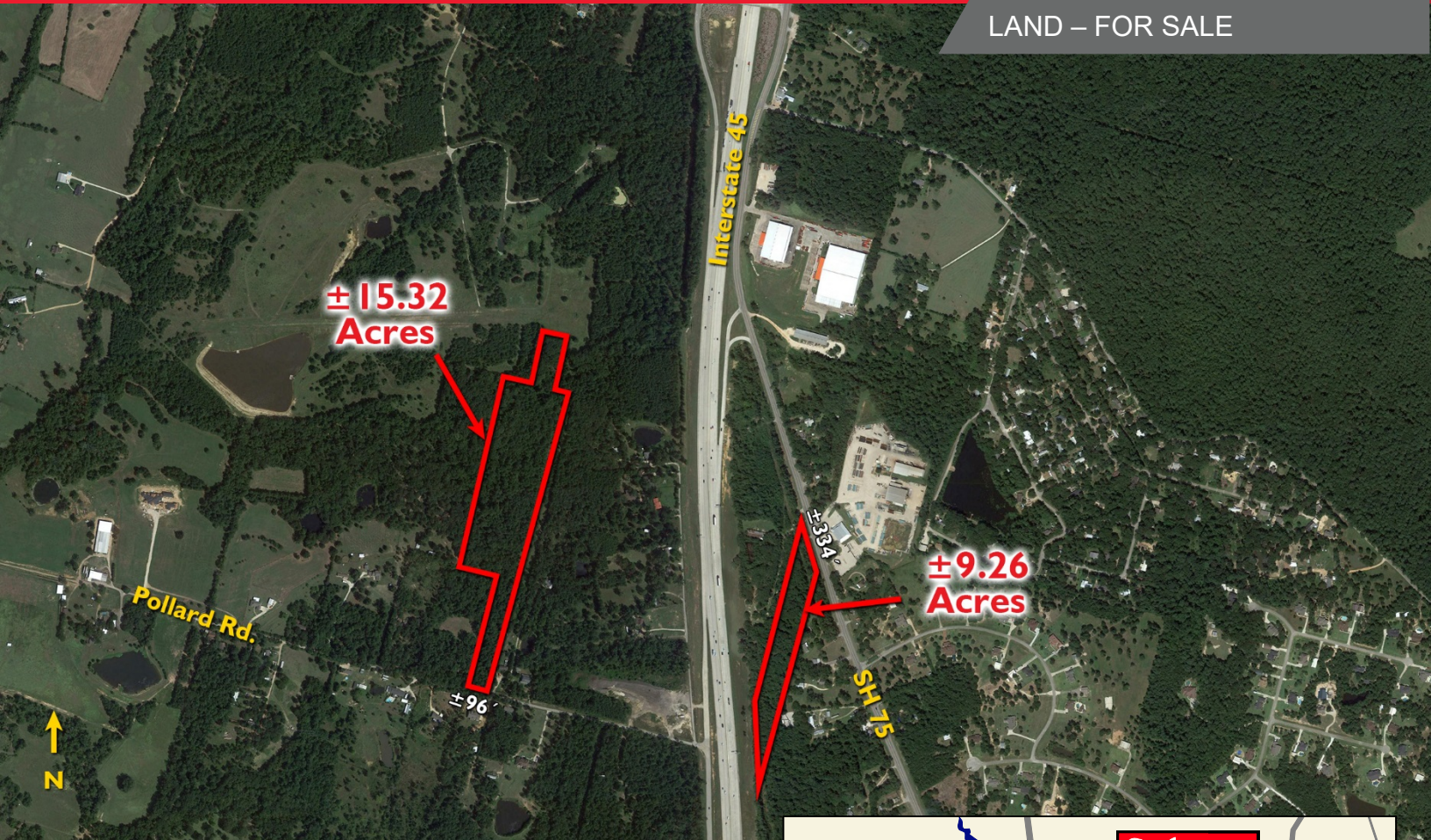


LAND – FOR SALE



- Two land tracts for sale located approximately five miles north of Willis, TX and in the path of strong development activity progressing north from The Woodlands along the Interstate 45 corridor

±15.32 acres with approximately 96' of frontage on Pollard Road, just to the west of Interstate 45

±9.26 acres of land with approximately 334' of frontage on SH 75. Pollard Road is on the north side & the western boundary of the site is off Interstate 45

- Located in Willis ISD
- **Pricing: We encourage all offers**

For more information, contact:

**David L. Cook, SIOR, CRE**  
(713) 963 2888  
[david.cook@cushwake.com](mailto:david.cook@cushwake.com)

**Scott E. Miller**  
(713) 963 2835  
[scott.miller@cushwake.com](mailto:scott.miller@cushwake.com)

**Jeff G. Peden, SIOR**  
(713) 963 2880  
[jeff.peden@cushwake.com](mailto:jeff.peden@cushwake.com)

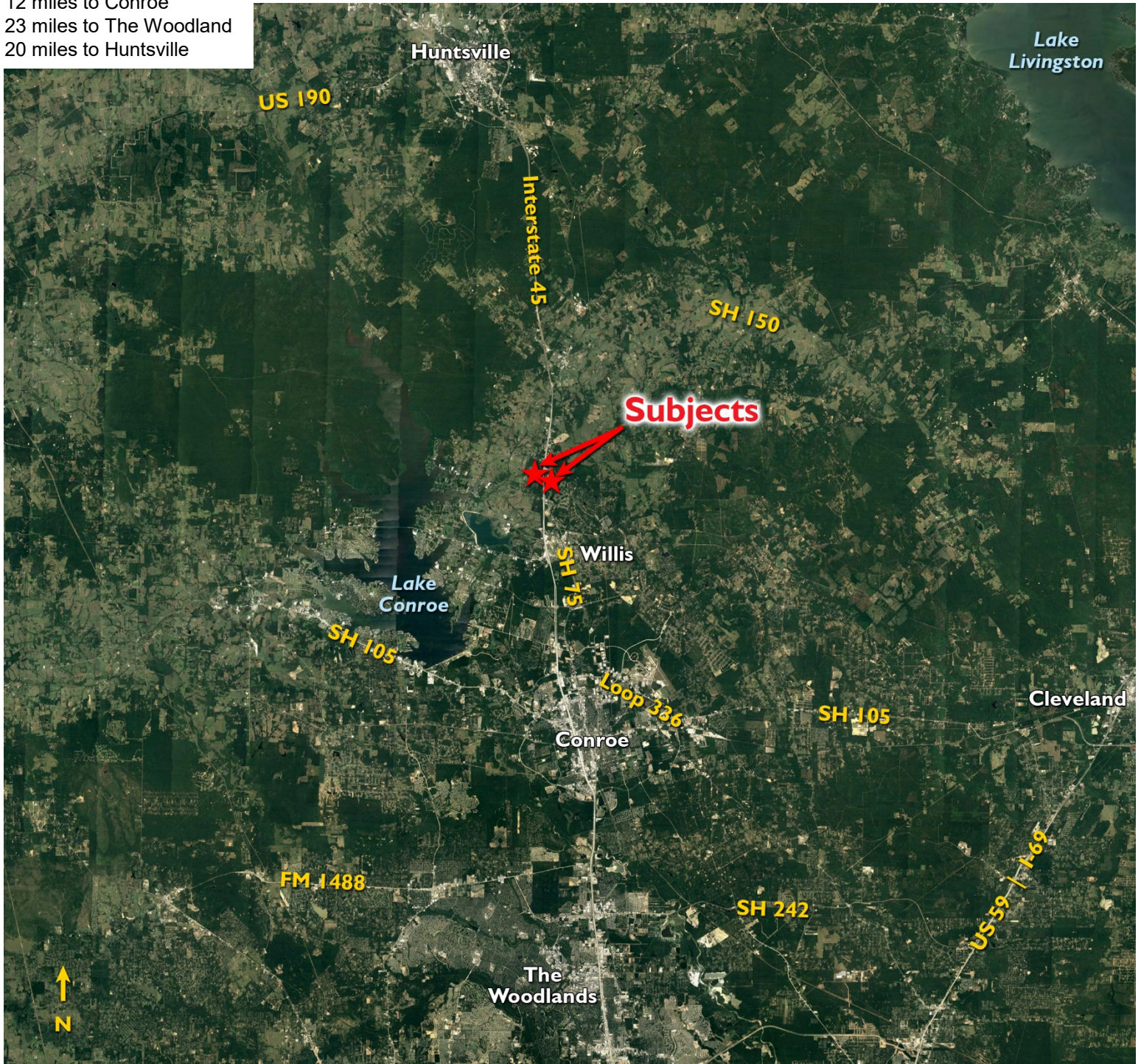
**Cushman & Wakefield**  
Licensed Real Estate Brokers  
1330 Post Oak Boulevard | Suite 2700  
Houston, TX 77056  
[www.cushmanwakefield.com](http://www.cushmanwakefield.com)

# Two Land Tracts in Montgomery County

Near Willis, TX



5 miles to Willis  
12 miles to Conroe  
23 miles to The Woodlands  
20 miles to Huntsville



For more information, contact:

**David L. Cook, SIOR, CRE**  
(713) 963 2888  
[david.cook@cushwake.com](mailto:david.cook@cushwake.com)

**Scott E. Miller**  
(713) 963 2835  
[scott.miller@cushwake.com](mailto:scott.miller@cushwake.com)

**Jeff G. Peden, SIOR**  
(713) 963 2880  
[jeff.peden@cushwake.com](mailto:jeff.peden@cushwake.com)

**Cushman & Wakefield**  
Licensed Real Estate Brokers  
1330 Post Oak Boulevard | Suite 2700  
Houston, TX 77056  
[www.cushmanwakefield.com](http://www.cushmanwakefield.com)