



For Sale

±12,750 SF Available on ±0.853 AC

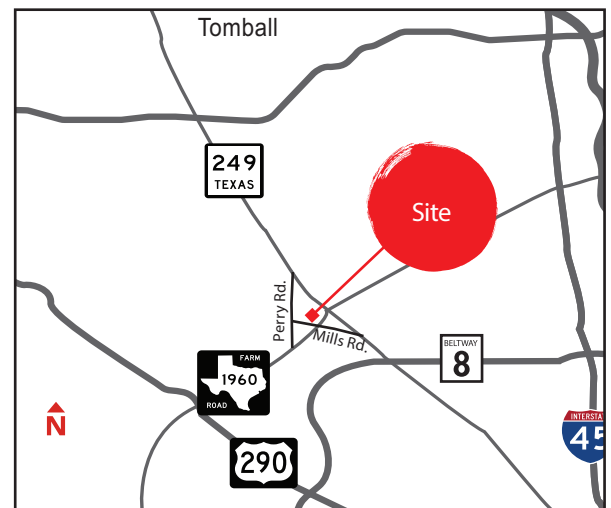
Site features:

- Total SF: ±12,750 SF
- Office SF: ± 3,024 SF (2-story)
- Freestanding building
- Land Area: ±0.853 AC
- Outside storage area
- Tiltwall construction
- Loading: Grade Level (Truck well possible)
- Clear Height: 20' clear
- 3 phase power
- T-5 lighting
- Please contact broker for pricing

13011 Misty Willow Drive
Houston, TX

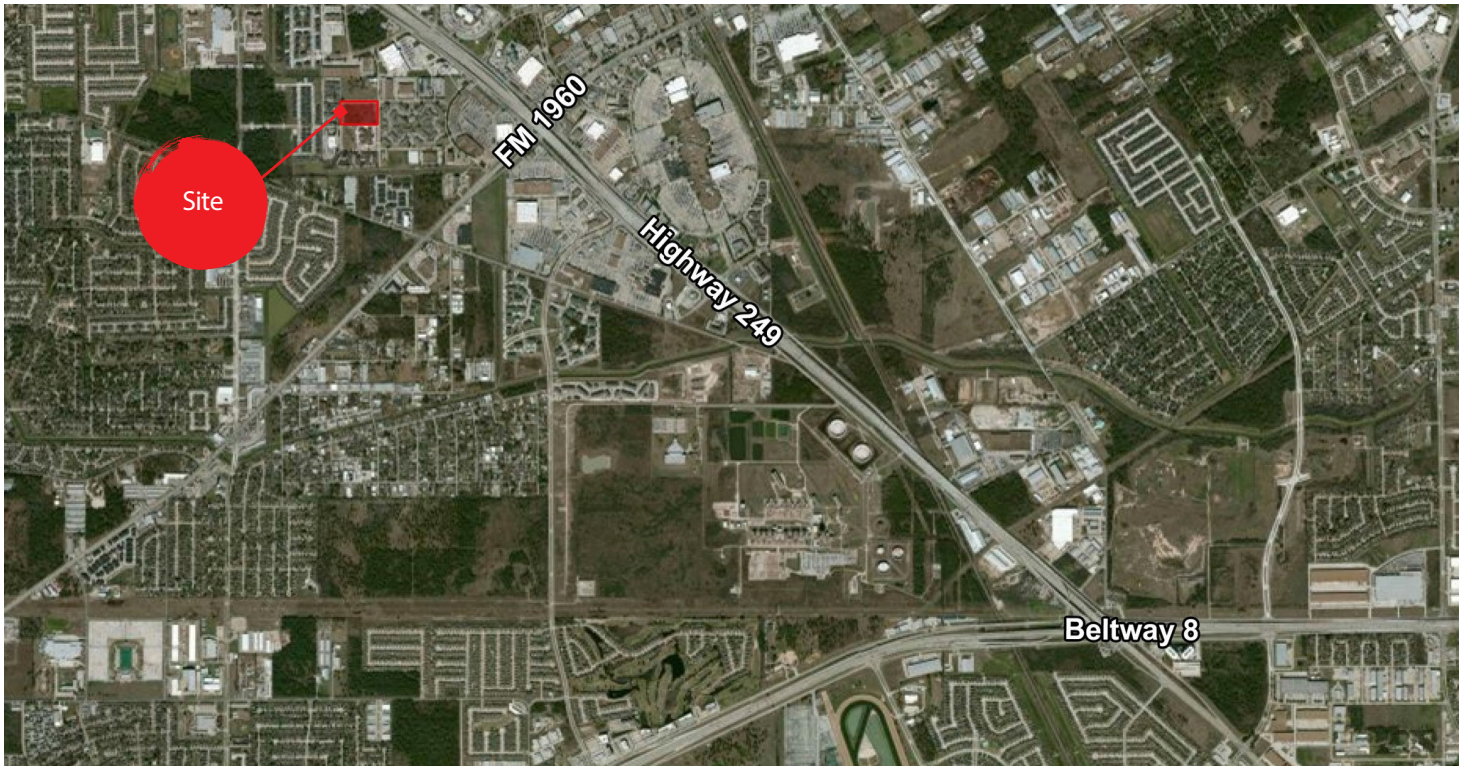
Joseph Berwick
+1 713 425 5842
joseph.berwick@am.jll.com

David Holland
+1 713 888 4095
david.holland@am.jll.com



For Sale

±12,750 SF on ±0.853 acres available for sale
13011 Misty Willow Drive. | Houston, TX



The information contained herein is obtained from sources believed to be reliable; however, JLL makes no guarantees, warranties or representations as to the completeness or accuracy thereof. The presentation of this property is submitted subject to errors, omissions, change of price or conditions, and is subject to prior sale, lease or withdrawal without notice.

