

LEASING OPPORTUNITY ON 16TH STREET



4527 & 4531 North 16th Street
Phoenix, Arizona
(16th Street & Highland)



- Full Service Leases
- 16th Street & Highland Location (Close to Camelback Corridor)
- Available Suites: **4527 Building**
 - Suite 105 ± 3,111 RSF
- **4531 Building**
 - Suite 126 ± 2,000 RSF
- Parking Ratio ±1:250
- Covered Parking Available
- Close to State Route 51, Loop 202 & I-10 Freeways
- Strong Long-Term Local Ownership!

For More Information, Please Contact:

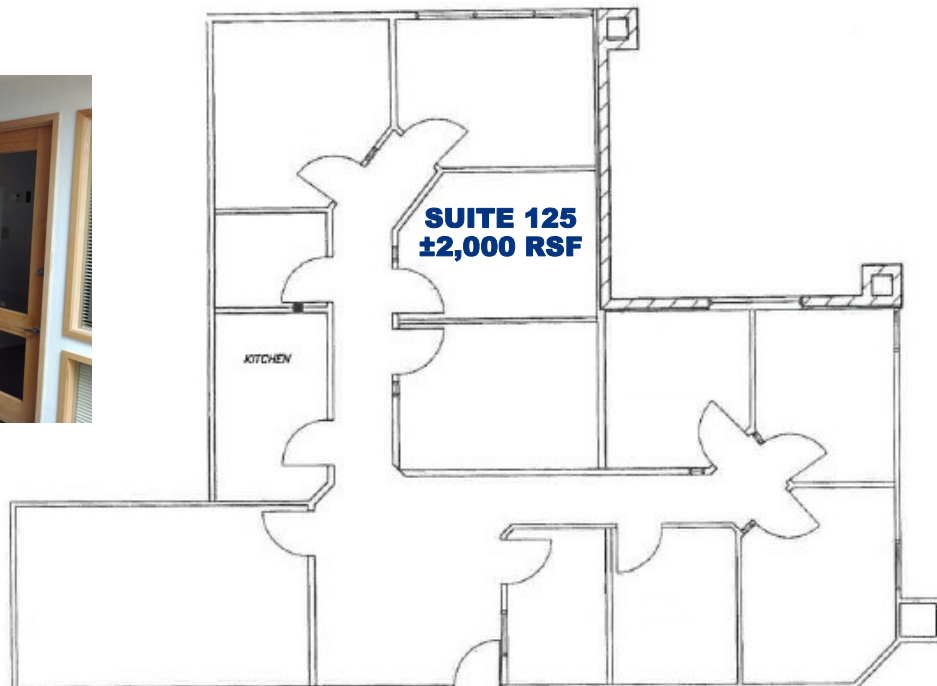
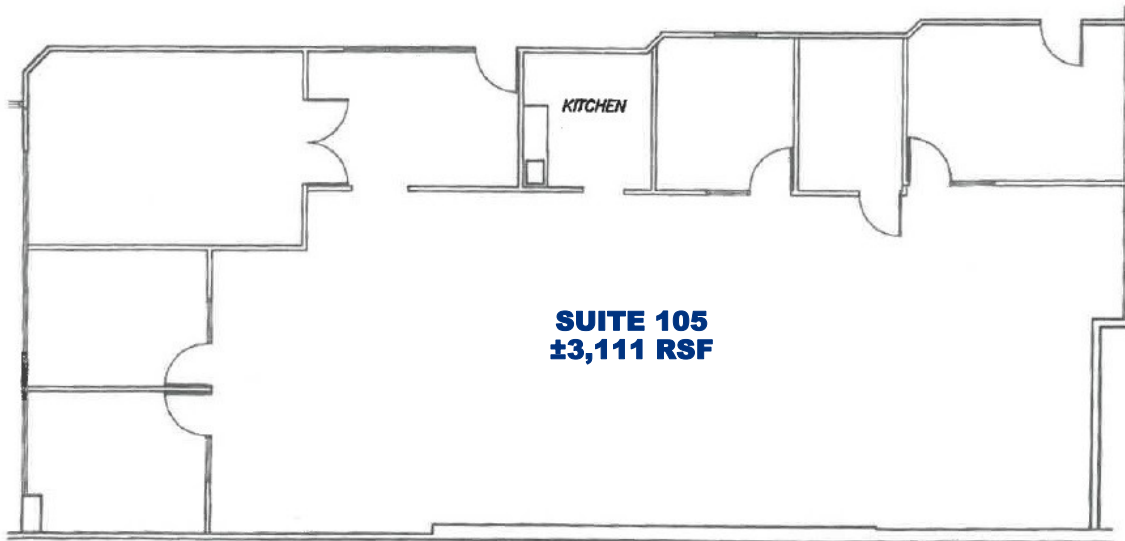
TYLER LUPTON
(602) 386-3009
tlupton@cutlercommercial.com



CUTLER COMMERCIAL
2150 E. Highland Suite 207
Phoenix, Arizona 85016
(602) 955-3500
(602) 955-2828 Fax
www.cutlercommercial.com

4527 & 4531 North 16th Street | Phoenix, Arizona (16th Street & Highland)

FLOOR PLANS & PHOTOGRAPHS



For More Information, Please Contact:

TYLER LUPTON
(602) 386-3009
tlupton@cutlercommercial.com

NOTE: ALL DIMENSIONS ARE APPROXIMATE AND SITE PLANS ARE NOT TO SCALE

All information furnished is from sources deemed reliable. No representation is made as to the accuracy thereof and it is submitted subject to errors, omissions, changes, or withdrawal without notice and to any special listings conditions, including the rate and manner of payment of commissions for particular offerings imposed by principals or agreed to by the company, the terms of which are available to interested principles or brokers.