

Lost Nation Road

# 7.79± Acres of Industrial Land For Sale

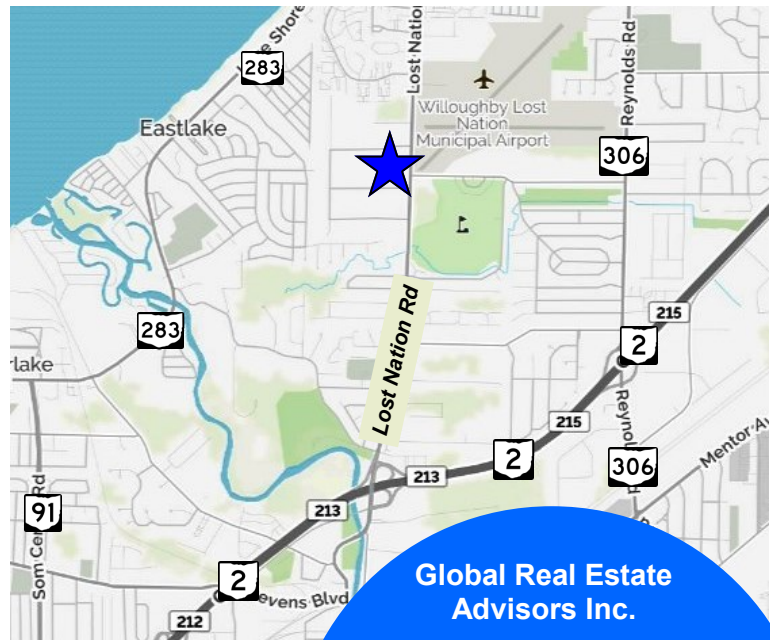
Willoughby, Ohio 44094 (Lake County)



## Property Features:

- 7.79± Acres
- Zoned Industrial
- Utilities at the Street
- Lake County PP #27B0530000330
- Located on Lost Nation Road between Willoughby Parkway and Western Parkway with Access from Western Parkway
- Across from Lost Nation Municipal Airport
- Minutes to State Route 2, Close Proximity to Interstate 90

**Sale Priced at \$506,285.00**



[www.GlobalCommercialRE.com](http://www.GlobalCommercialRE.com)  
8585 East Ave., Mentor, Ohio 44060

**Real Estate Advisors Inc.**  
BROKER

**Global Real Estate  
Advisors Inc.**

**Tim Sawicki**

**440-255-5552 x 222**

**440-283-5143 Cell**

**Tim@GlobalCommercialRE.com**

**Neil Sawicki, SIOR, Broker**

**440-255-5552 x 221**

**Neil@GlobalCommercialRE.com**

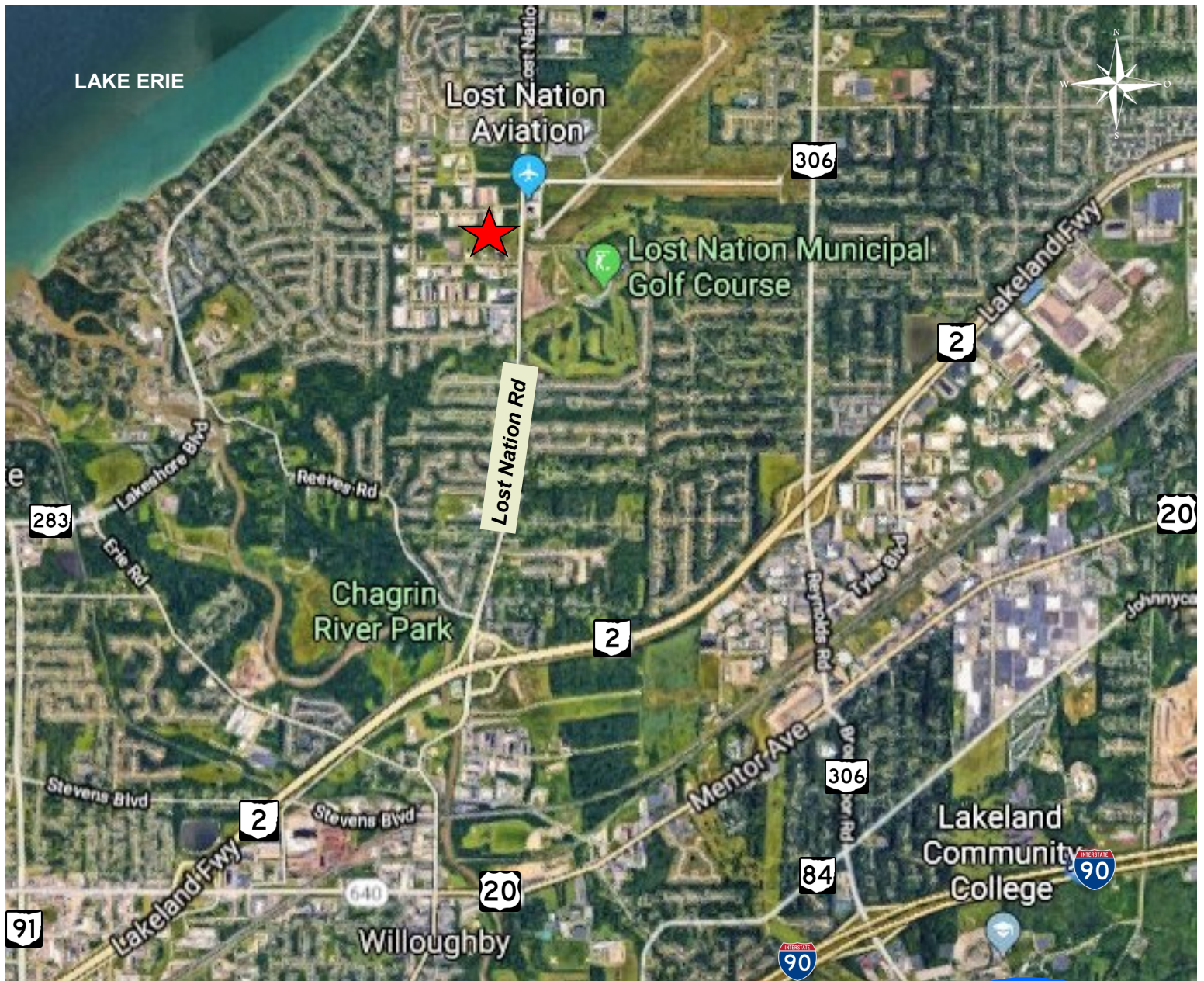
This information has been secured from sources we believe are reliable, but we make no representations or warranties, expressed or implied, as to the accuracy of the information. References to condition, square footage or age are approximate. Buyer or Tenant acknowledges that they are relying on their own investigations and are not relying on Broker provided information. Procuring broker shall only be entitled to a commission, calculated in accordance with the rates approved by our principal only if such procuring broker executes a brokerage agreement acceptable to us and our principal and the conditions as set forth in the brokerage agreement are fully and unconditionally satisfied. Although all information furnished regarding property for sale, rental, or financing is from sources deemed reliable, such information has not been verified and no express representation is made nor is any to be implied as to the accuracy thereof and it is submitted subject to errors, omissions, change of price, rental or other conditions, prior sale, lease or financing, or withdrawal without notice and to any special conditions imposed by our principal.



Lost Nation Road

# 7.79± Acres of Industrial Land For Sale

Willoughby, Ohio 44094 (Lake County)



[www.GlobalCommercialRE.com](http://www.GlobalCommercialRE.com)  
8585 East Ave., Mentor, Ohio 44060

**Real Estate Advisors Inc.**  
BROKER

Global Real Estate  
Advisors Inc.

Tim Sawicki

440-255-5552 x 222

440-283-5143 Cell

[Tim@GlobalCommercialRE.com](mailto:Tim@GlobalCommercialRE.com)

Neil Sawicki, SIOR, Broker

440-255-5552 x 221

[Neil@GlobalCommercialRE.com](mailto:Neil@GlobalCommercialRE.com)

This information has been secured from sources we believe are reliable, but we make no representations or warranties, expressed or implied, as to the accuracy of the information. References to condition, square footage or age are approximate. Buyer or Tenant acknowledges that they are relying on their own investigations and are not relying on Broker provided information. Procuring broker shall only be entitled to a commission, calculated in accordance with the rates approved by our principal only if such procuring broker executes a brokerage agreement acceptable to us and our principal and the conditions as set forth in the brokerage agreement are fully and unconditionally satisfied. Although all information furnished regarding property for sale, rental, or financing is from sources deemed reliable, such information has not been verified and no express representation is made nor is any to be implied as to the accuracy thereof and it is submitted subject to errors, omissions, change of price, rental or other conditions, prior sale, lease or financing, or withdrawal without notice and to any special conditions imposed by our principal.