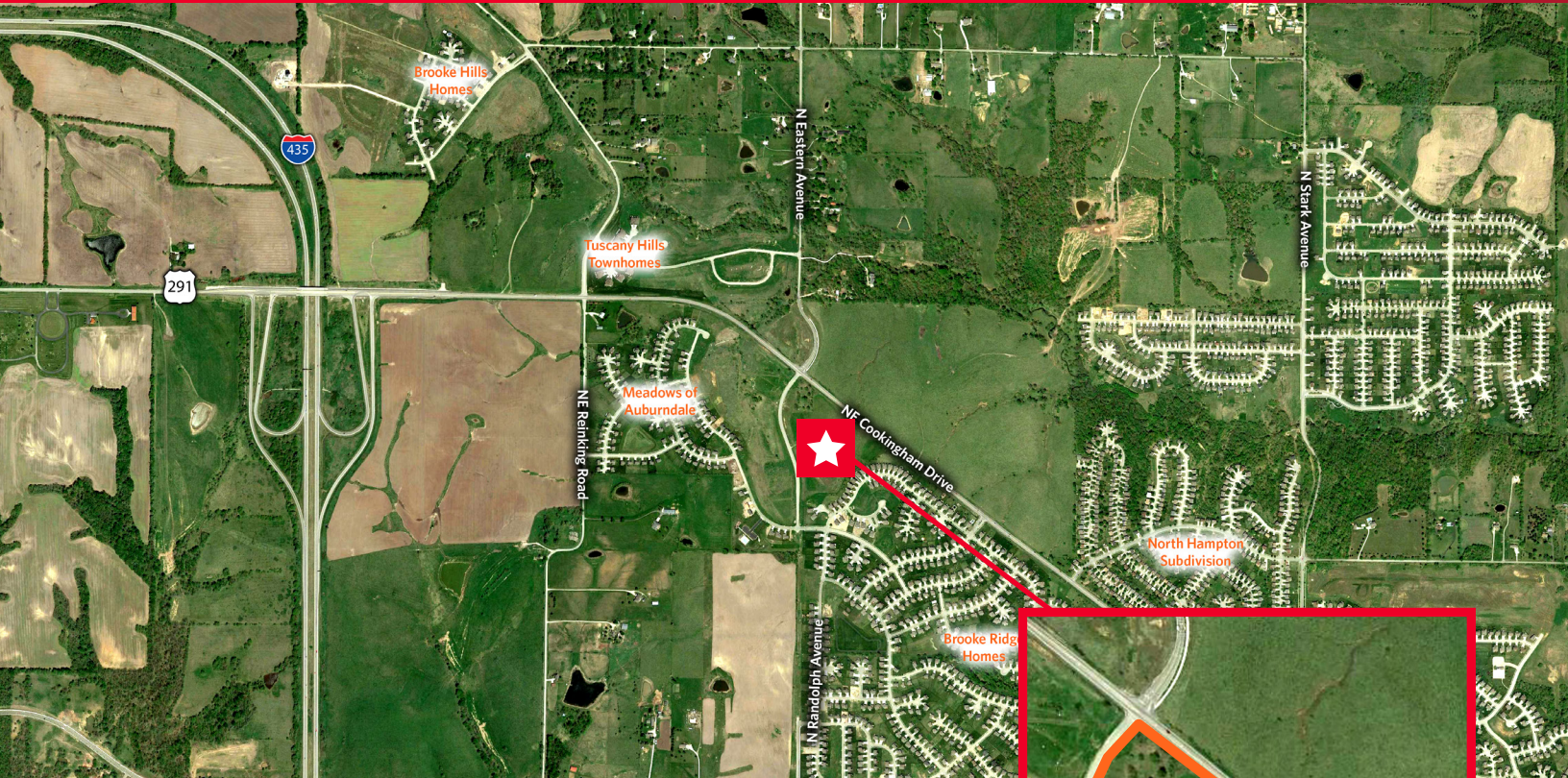




FOR SALE

SEC 291 Highway & Eastern Avenue Kansas City, MO



±16.58 Acres of Land
Sale Price: \$2.50 PSF

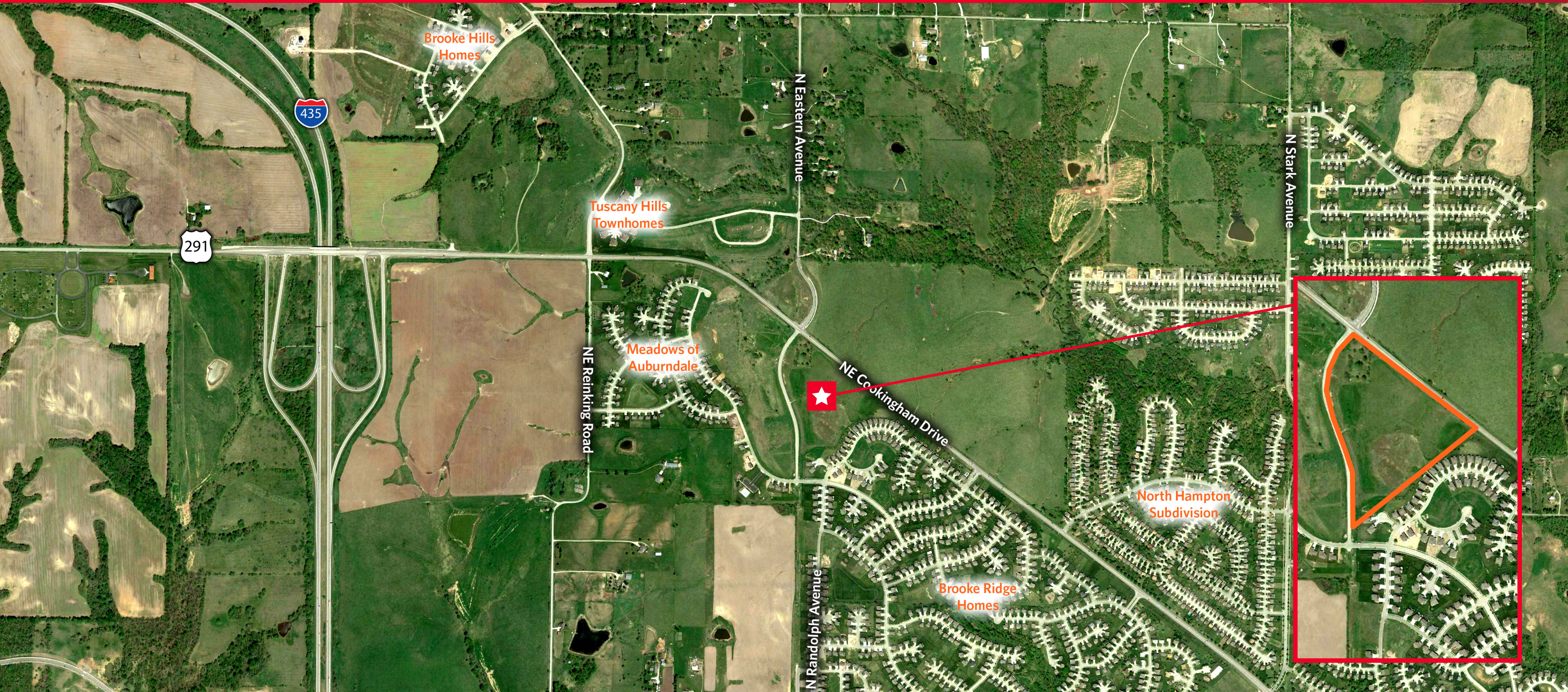
Property Highlights

- Zoned CP-2
- Approved for 100,000 square feet retail
- Adjacent to Auburndale Estates
- All utilities to site



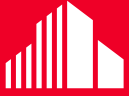
Craig Kelly, SIOR
Director
+1 816 412 0279
craig.kelly@cushwake.com

4600 Madison Avenue, Suite 800
Kansas City, MO 64112
Main +1 816 221 2200
Fax +1 816 842 2798
cushmanwakefield.com



Craig Kelly, SIOR
Director
+1 816 412 0279
craig.kelly@cushwake.com

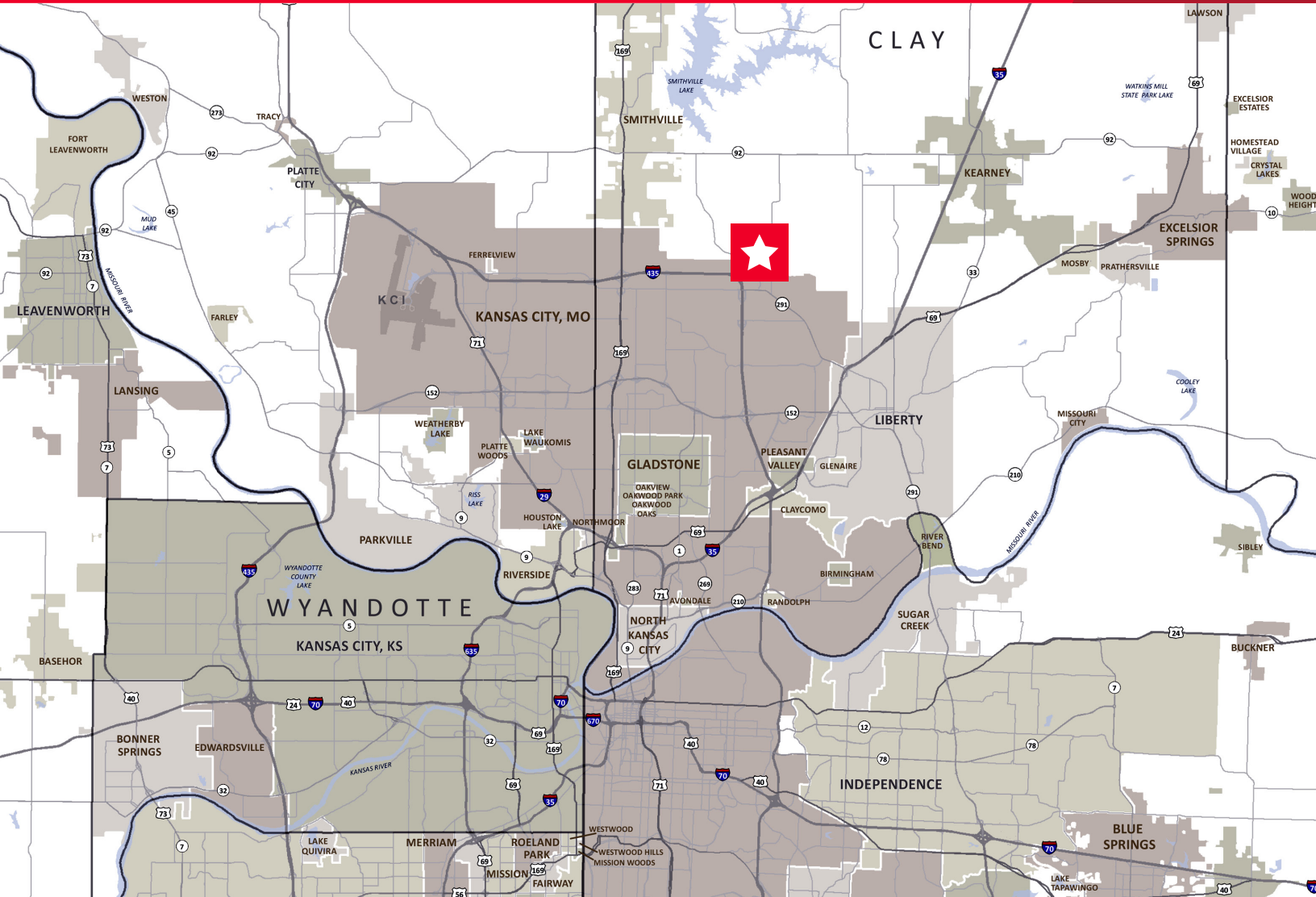
4600 Madison Avenue, Suite 800
Kansas City, MO 64112
Main +1 816 221 2200
Fax +1 816 842 2798
cushmanwakefield.com



**CUSHMAN &
WAKEFIELD**

FOR SALE

SEC 291 Highway & Eastern Avenue Kansas City, MO



Demographics

	1 Mile	3 Miles	5 Miles
Population	4,446	18,278	56,948
AVG. HH Income	\$105,437	\$112,526	\$106,334

Craig Kelly, SIOR
Director
+1 816 412 0279
craig.kelly@cushwake.com

4600 Madison Avenue, Suite 800
Kansas City, MO 64112
Main +1 816 221 2200
Fax +1 816 842 2798
cushmanwakefield.com