

# KENWOOD PLACE

7727 Kenwood Road Cincinnati, OH 45236



MIDLAND ATLANTIC  
PROPERTIES

## AVAILABLE



### PROPERTY OVERVIEW

Kenwood Place is a 74,000 square foot upscale retail development located directly across from the Kenwood Towne Centre in Cincinnati's #1 retail market.

### PROPERTY HIGHLIGHTS

- 1,678 to 28,540 Square Feet Available
- Tenants Include: Kenwood Theatre, Calico Corners, Massage Envy, Dewey's Pizza
- Kenwood Place is Ideally Located Directly Across from Kenwood Town Center, Cincinnati's 1.1 Million Square Foot Upscale Shopping Destination Boasting the Highest Per Square Foot Sales in the region with Retailers such as Nordstrom, Macy's, Dillards, Cheesecake Factory, The Container Store and Crate & Barrel
- Over 2 Million Square Feet of Office Space within 2 Miles
- 741 Feet of Frontage on Kenwood Road

### DEMOGRAPHICS

|                   | 3 MILE    | 5 MILES  |
|-------------------|-----------|----------|
| Total Population  | 67,793    | 167,748  |
| Average HH Income | \$106,780 | \$99,266 |
| Businesses        | 4,151     | 10,704   |
| Employees         | 51,050    | 155,982  |

### TRAFFIC COUNTS

|                 | 2019   |
|-----------------|--------|
| Kenwood Road    | 44,002 |
| Montgomery Road | 22,429 |

### MIDLAND ATLANTIC PROPERTIES

Cincinnati Office  
8044 Montgomery Rd, Suite 370  
Cincinnati, OH 45236

MIDLANDATLANTIC.COM

### KYLE NAGELEISEN

Direct: 513.792.5003  
knageleisen@midlandatlantic.com

DEVELOPMENT • BROKERAGE • ACQUISITIONS • MANAGEMENT

Information contained herein has been obtained from sources deemed reliable but is not guaranteed and is subject to change without notice.





# KENWOOD PLACE

7727 Kenwood Road Cincinnati, OH 45236



MIDLAND ATLANTIC  
PROPERTIES



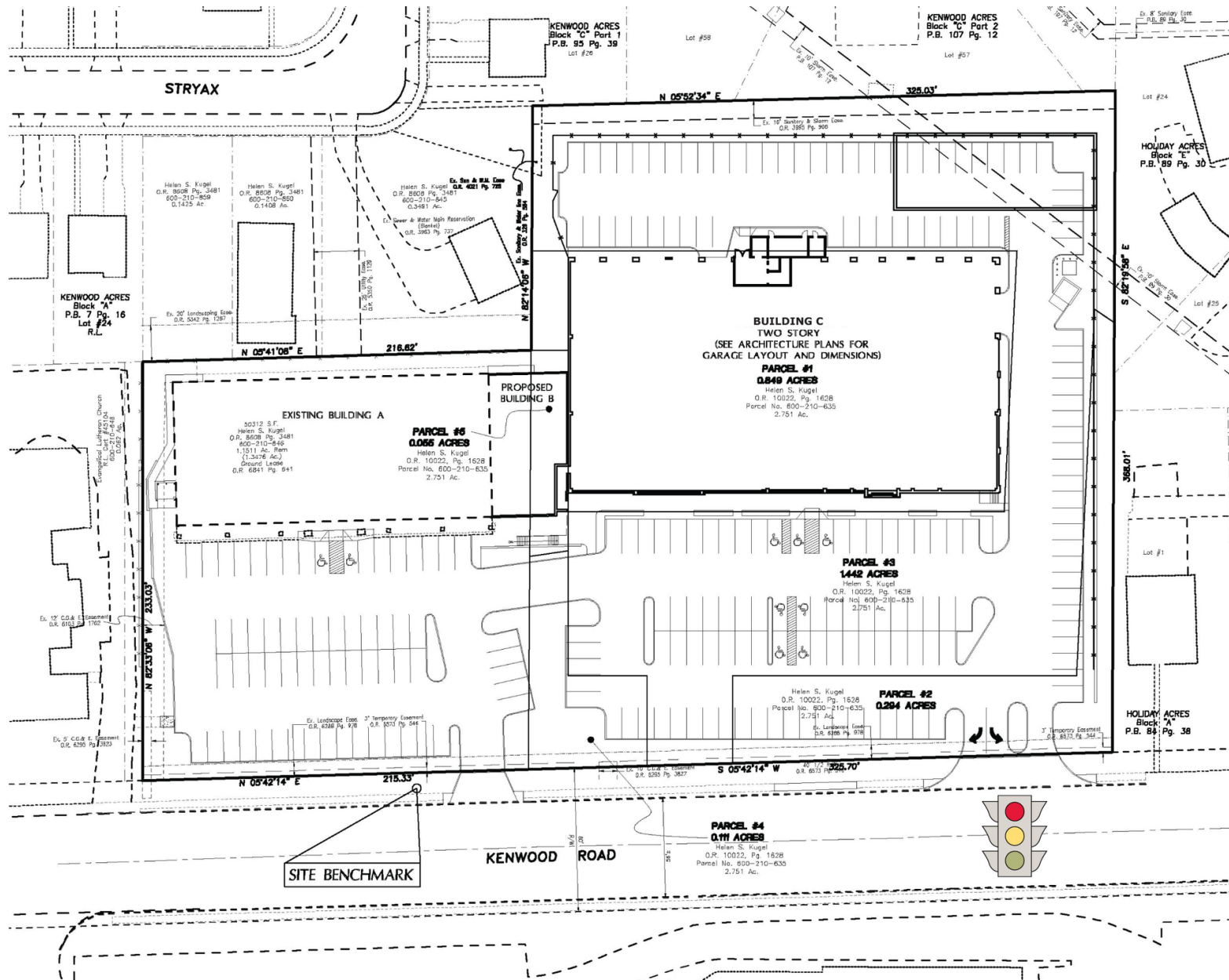


# KENWOOD PLACE

7727 Kenwood Road Cincinnati, OH 45236



MIDLAND ATLANTIC  
PROPERTIES





# KENWOOD PLACE

7727 Kenwood Road Cincinnati, OH 45236



MIDLAND ATLANTIC  
PROPERTIES



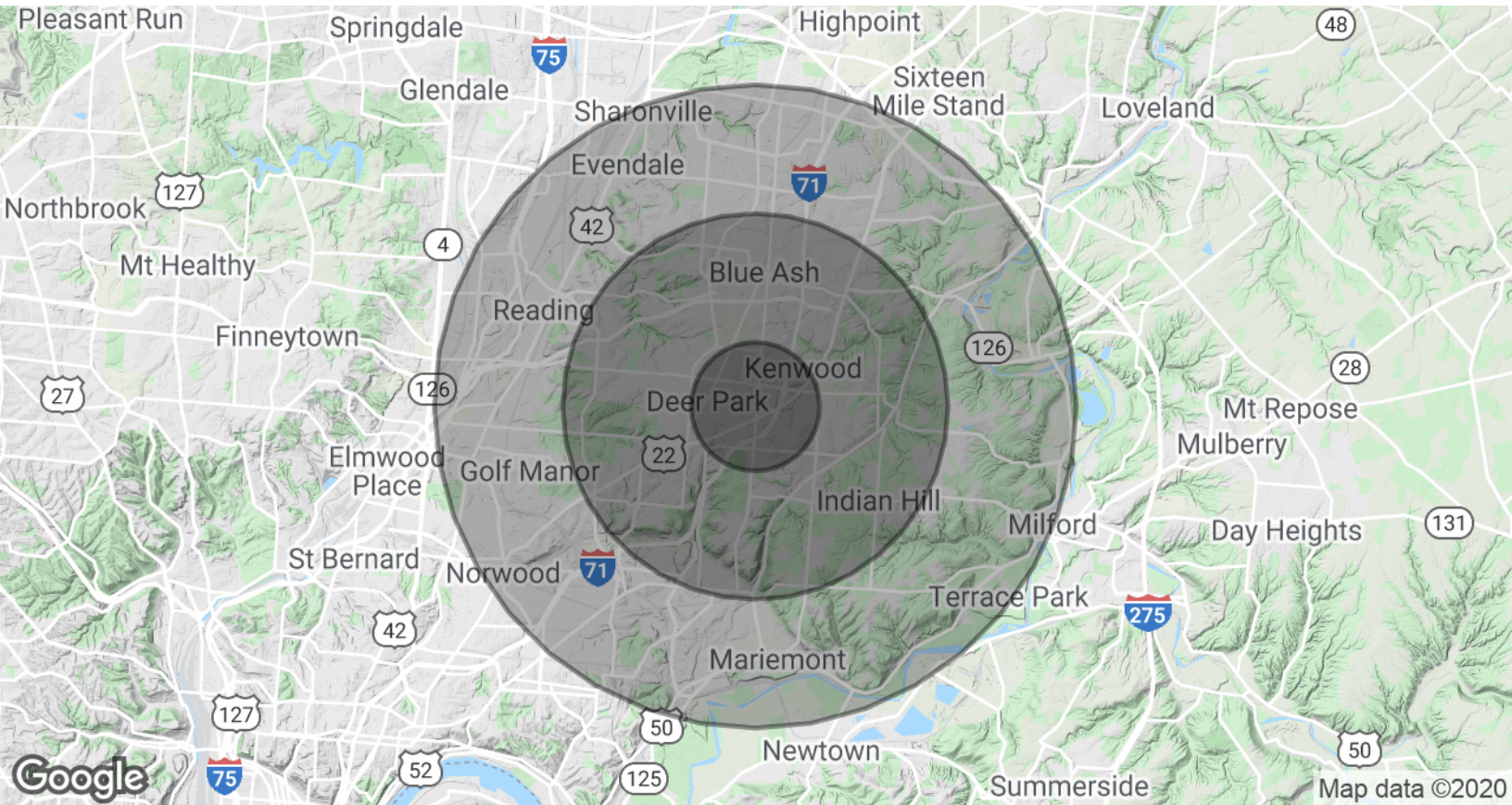


# KENWOOD PLACE

7727 Kenwood Road Cincinnati, OH 45236



MIDLAND ATLANTIC  
PROPERTIES



## POPULATION & HOUSING

|                             | 1 MILE    | 3 MILES   | 5 MILES   |
|-----------------------------|-----------|-----------|-----------|
| Total Population            | 11,801    | 67,759    | 167,748   |
| Projected Population (2014) | 11,764    | 67,446    | 167,654   |
| Total Households            | 5,683     | 30,446    | 77,579    |
| Median Home Value           | \$195,798 | \$248,267 | \$234,407 |

## INCOME & BUSINESS

|                                | 1 MILE   | 3 MILES   | 5 MILES  |
|--------------------------------|----------|-----------|----------|
| Average HH income              | \$85,791 | \$106,780 | \$99,266 |
| Daytime Population (16+ years) | 20,450   | 70,387    | 202,802  |
| Total Businesses               | 1,279    | 4,151     | 10,704   |
| Total Employees                | 17,568   | 51,050    | 155,982  |

### MIDLAND ATLANTIC PROPERTIES

Cincinnati Office  
8044 Montgomery Rd, Suite 370  
Cincinnati, OH 45236

### KYLE NAGELEISEN

Direct: 513.792.5003  
knageleisen@midlandatlantic.com

MIDLANDATLANTIC.COM

DEVELOPMENT • BROKERAGE • ACQUISITIONS • MANAGEMENT

Information contained herein has been obtained from sources deemed reliable but is not guaranteed and is subject to change without notice.