

SCOTTSDALE AIRPARK
SHOWROOM
WAREHOUSE

FOR LEASE

±10,471 sf



- Premier Scottsdale Airpark Showroom!
- Directly across from Costco
- Adjacent to flooring retailer and furniture store
- Showroom: ±8,025 sf | Warehouse: ±2,446 sf
- Working kitchen with propane

15250 N Hayden Road | Scottsdale, Arizona 85260



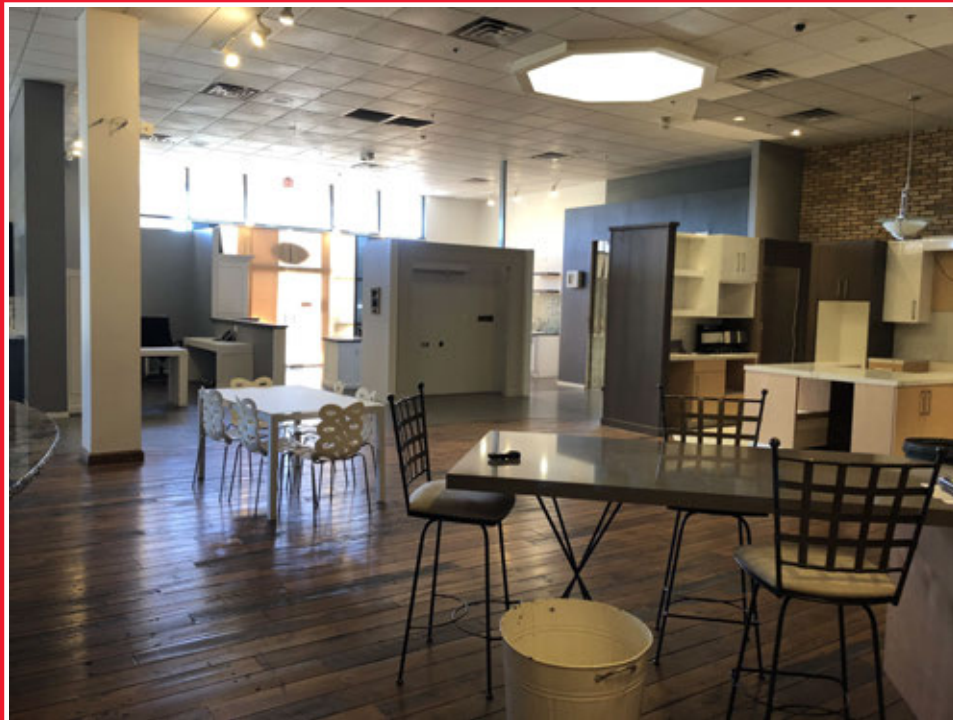
Randy Shell
Designated Broker
480 694 4100 | randy@shellcommercial.com
16410 N 91st St | Ste 112 | Scottsdale, AZ 85260

 **SHELL**
Commercial Investment Real Estate
480 443 3992

shellcommercial.com



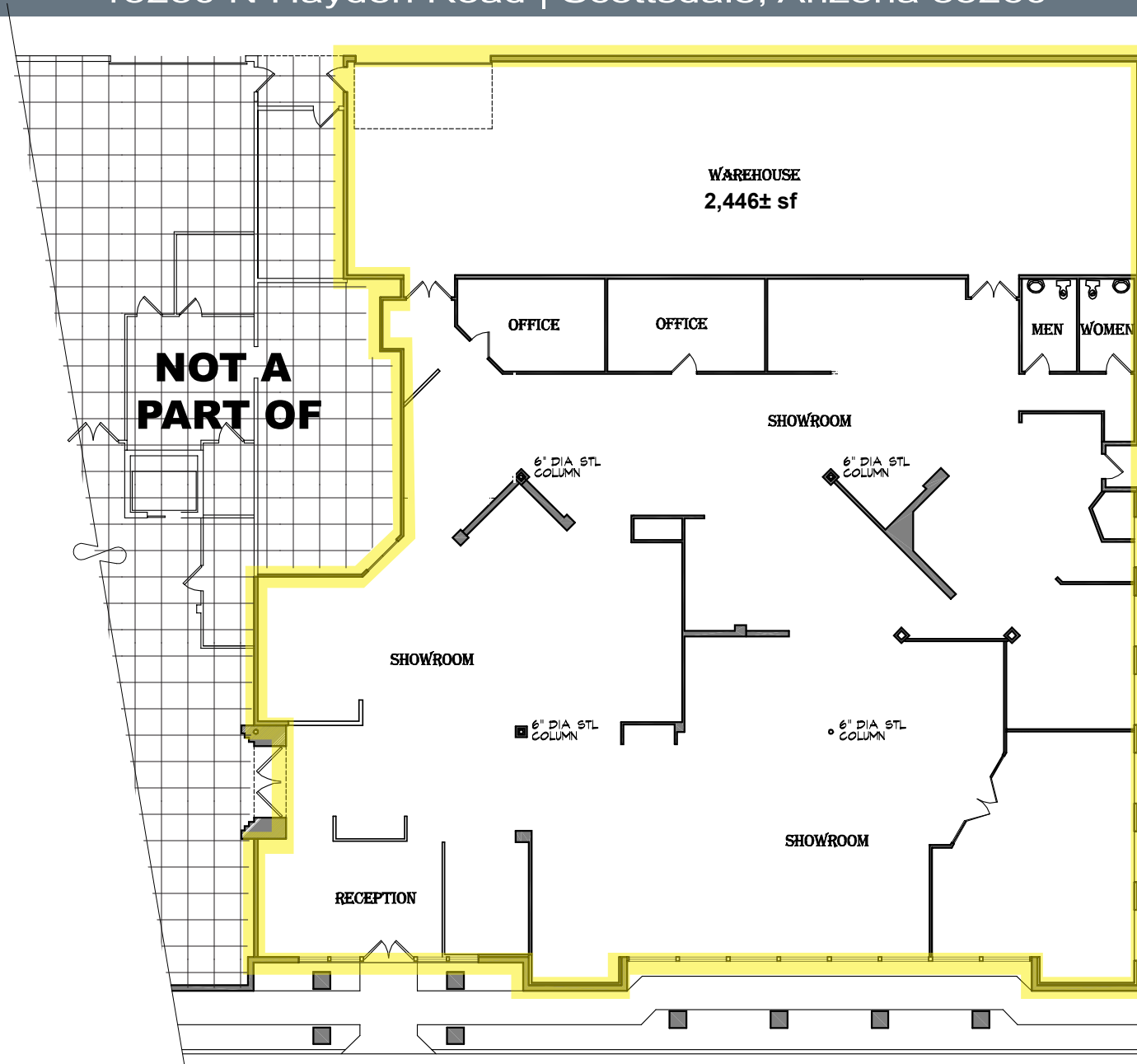
The above is subject to prior sales and leasing. This information has been secured from sources we believe to be reliable, but we make no representation or warranties, expressed or implied as to the accuracy of this information.



The above is subject to prior sales and leasing. This information has been secured from sources we believe to be reliable, but we make no representation or warranties, expressed or implied as to the accuracy of this information.

FLOOR PLAN

15250 N Hayden Road | Scottsdale, Arizona 85260

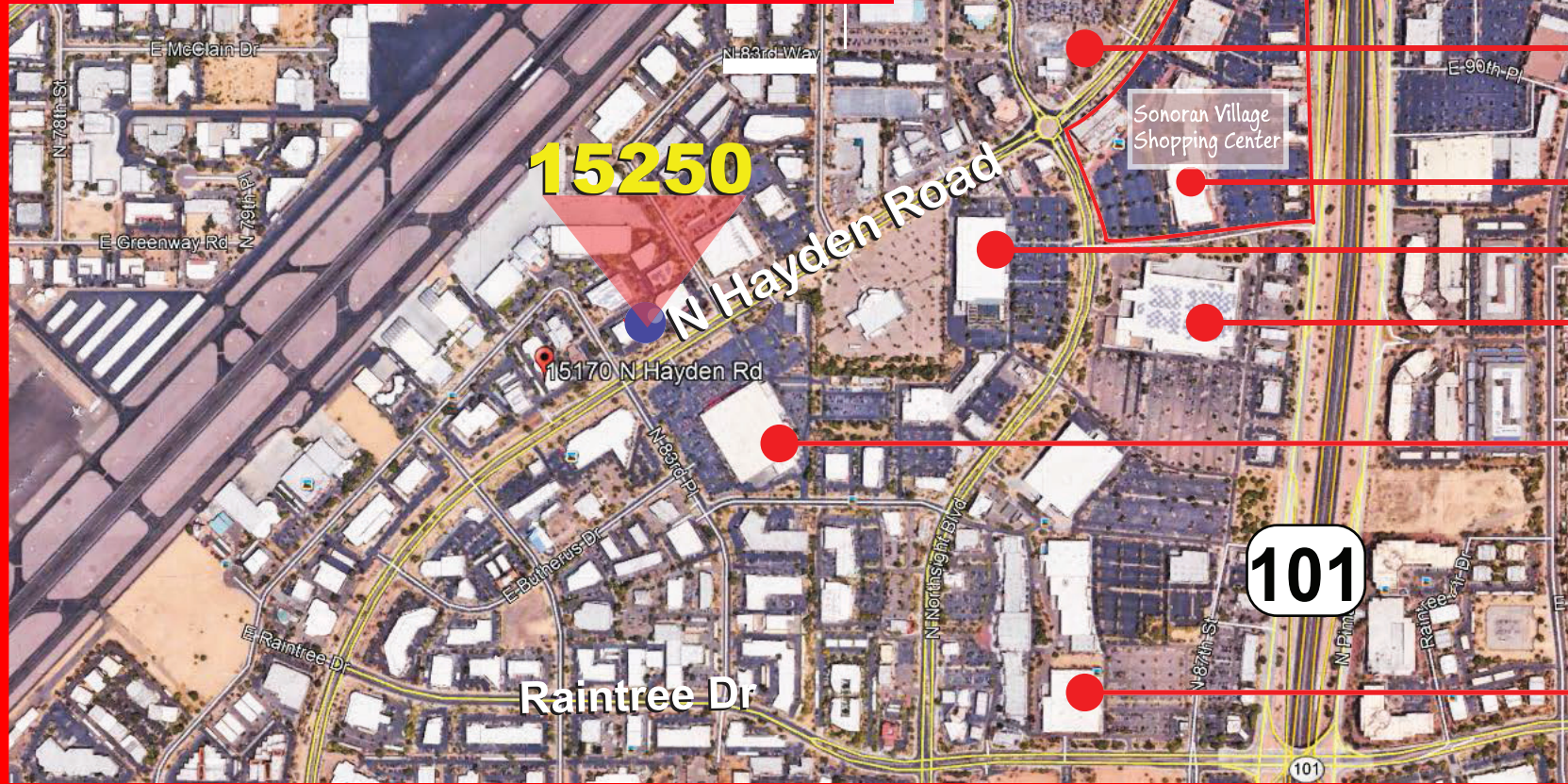


NOT TO SCALE

All information furnished regarding property for sale, rental or financing is from sources deemed reliable, but no warranty or representation is made to the accuracy thereof and same is submitted to errors, omissions, change of price, rental or other conditions, prior to sale, lease or financing or withdrawal without notice. No liability of any kind is to be imposed on the broker herein. This information has been secured from sources deemed reliable, however, we make no warranties as to its accuracy.

AERIAL

15250 N Hayden Road | Scottsdale, Arizona 85260



The above is subject to prior sales and leasing. This information has been secured from sources we believe to be reliable, but we make no representation or warranties, expressed or implied as to the accuracy of this information.