

FOR LEASE

Hjarta

1530 NW MARKET ST, SEATTLE, WA 98107

RETAIL



PROPERTY INFO

CREATIVE RETAIL/OFFICE SPACE IN THE HEART OF BALLARD'S RETAIL CORE

Ballard is the neighborhood to be in! Blossoming with first class restaurants from the best chefs, lounges to hear live music, cozy cafes, family owned shops, and anything else you need! Ballard has a great year-round farmers market and wonderful night life. An abundance of new apartment projects nearby bring thousands more residents to the area to live, work and play!

- Prime location near the corner of NW Market and 15th Ave NW
- Approximately 951 RSF
- \$30 PSF + NNN
- Traffic Counts: 35,000 VPD
- Former apartment model leasing office with 26 feet of frontage. Finished with electrical, restroom, front office, hardwood flooring, storage close and HVAC
- Ample street retail and street parking
- Ideal for service related retail, aesthetic/cosmetics or sports related medicine, accounting office, tech firm, tutoring center, and more!
- Neighboring tenants include Bartells, Five Guys, Safeway, Walgreens, Keybank, Sprint, Waxing the City, Mighty O's 7-11 and many more!

www.cbre.us/seattle

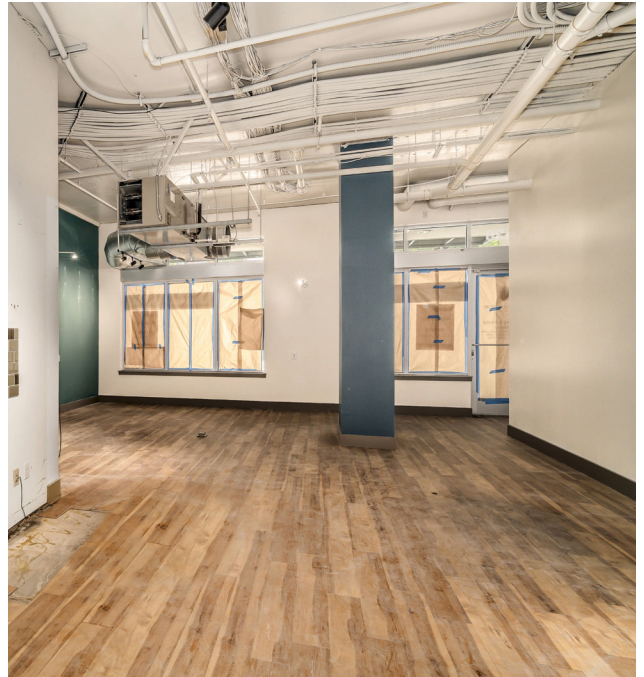
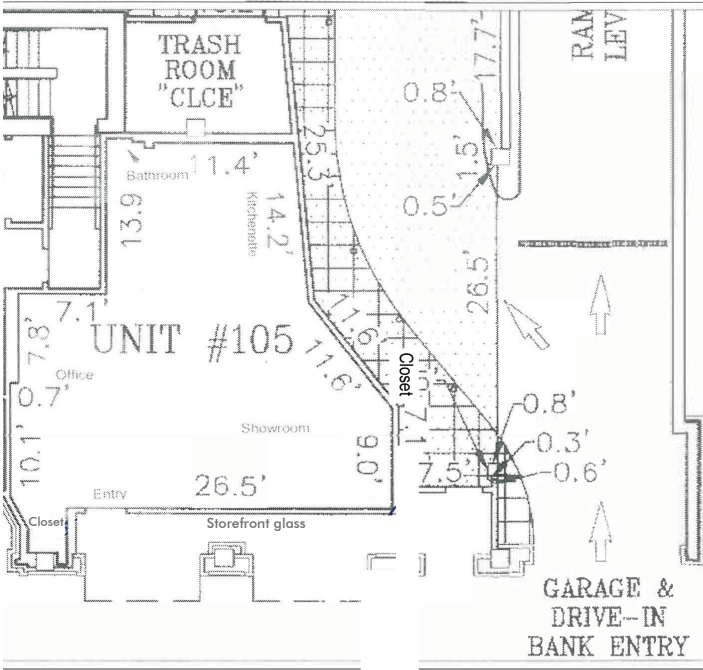
CBRE

FOR LEASE

Hjarta



SITE PLAN





 2018 DEMOGRAPHICS

	1 Mile	3 Miles	5 Miles
Employees	20,762	76,536	346,333
Population Current Year Estimate	32,587	203,662	435,904
Average Household Income	\$109,320	\$123,231	\$114,248
2012 - 2016 Housing Units	15,745	92,990	209,001
Daytime Population	34,923	161,415	568,002



FOR LEASE

Hjarta

1530 NW MARKET ST, SEATTLE, WA 98107

RETAIL



AERIAL



CONTACT US

Lourdes Valdesuso

+1 206 830 6474
lourdes.valdesuso@cbre.com

Gretchen Hamm

+1 206 292 6166
gretchen.hamm@cbre.com

CBRE Inc.
1420 5th Ave, #1700
Seattle, WA 98101

© 2019 CBRE, Inc. This information has been obtained from sources believed reliable. We have not verified it and make no guarantee, warranty or representation about it. Any projections, opinions, assumptions or estimates used are for example only and do not represent the current or future performance of the property. You and your advisors should conduct a careful, independent investigation of the property to determine to your satisfaction the suitability of the property for your needs. Photos herein are the property of their respective owners and use of these images without the express written consent of the owner is prohibited. CBRE and the CBRE logo are service marks of CBRE, Inc. and/or its affiliated or related companies in the United States and other countries. All other marks displayed on this document are the property of their respective owners.111819ar

www.cbre.us/seattle

