



1,787 SF Office Space

For Lease or For Sale

808

E WOODFIELD RD SCHAUMBURG, IL SUITE 200



1,787
Square Feet
Medical Space



Class "A"
Interior
Finishes



1.5 Miles
From
Interstate 290



3 Miles
From
Interstate 90



Located in Heart
of Schaumburg
Business District



Pace Bus Station
Located 1 Block
From Building

FOR MORE INFORMATION, PLEASE CONTACT:

Thomas Turk

Senior Vice President

847.649.2661

TomTurk@LPcommercial.com

Eugene "Bud" Gross

Director of Investments

847.649.2663

EGross@LPcommercial.com

Address

- ◆ 808 East Woodfield Road | Suite 200
Schaumburg, IL 60173

Space Highlights

- ◆ 1,787 SF Medical Office For Lease
- ◆ Highly Sought After Schaumburg Business District Location
- ◆ Building Built in 2006 with Quality Interior Build-Out featuring Upgraded Lighting, Flooring and Class "A" Finishes
- ◆ Easy Access from Interstates 290 and 90
- ◆ Ample Parking
- ◆ Building Signage Available
- ◆ Located One Block away from Pace Bus Station (608)

Asking Rate

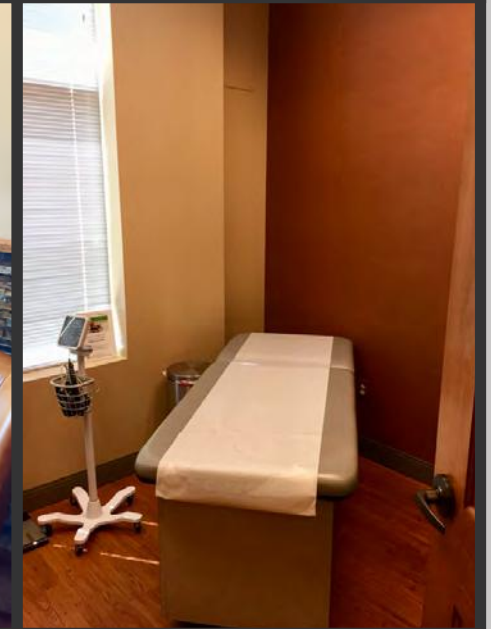
- ◆ Lease Rate: \$19.60PSF NET
- ◆ Sale Price: \$520,000.00



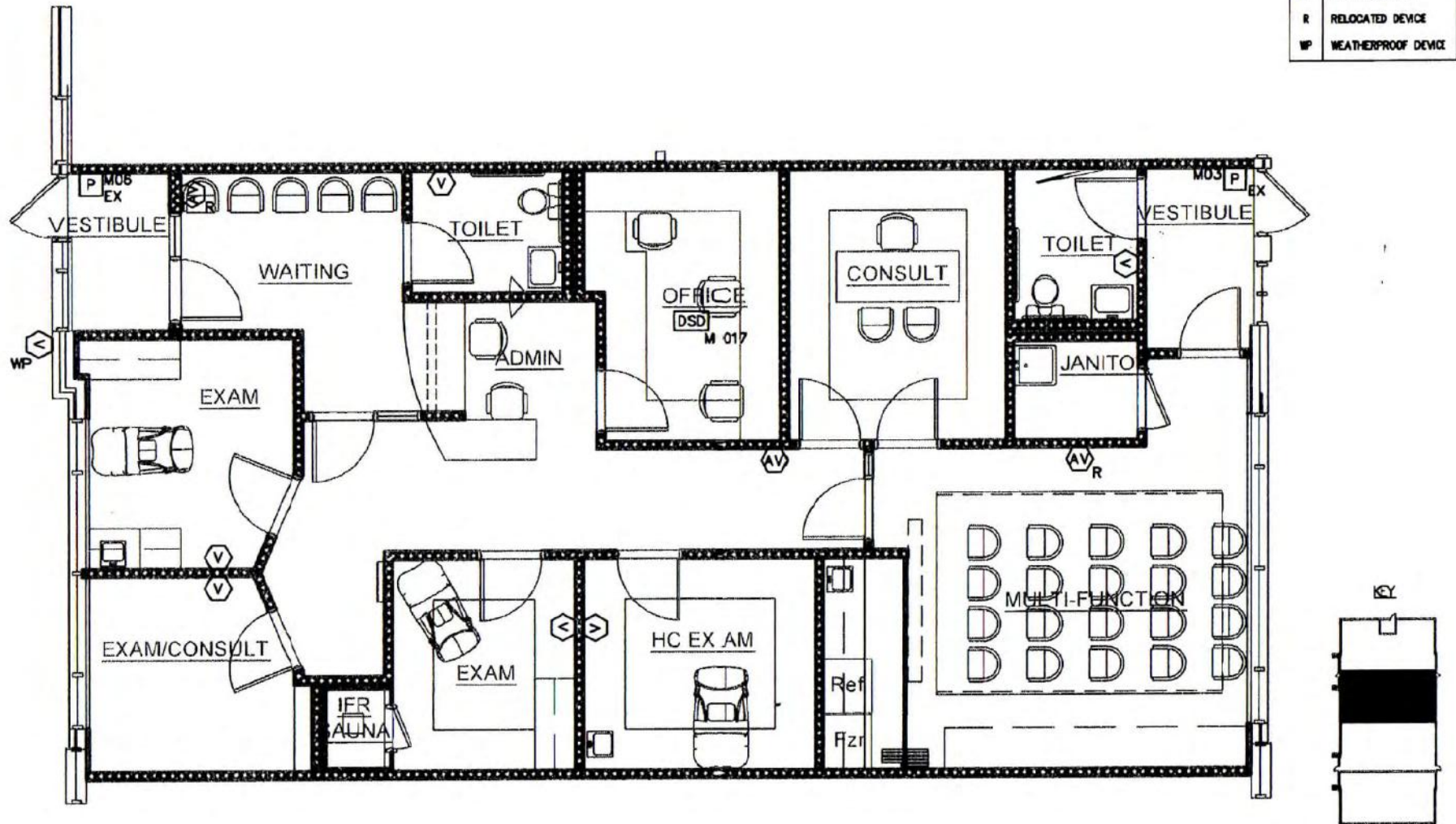
Photos

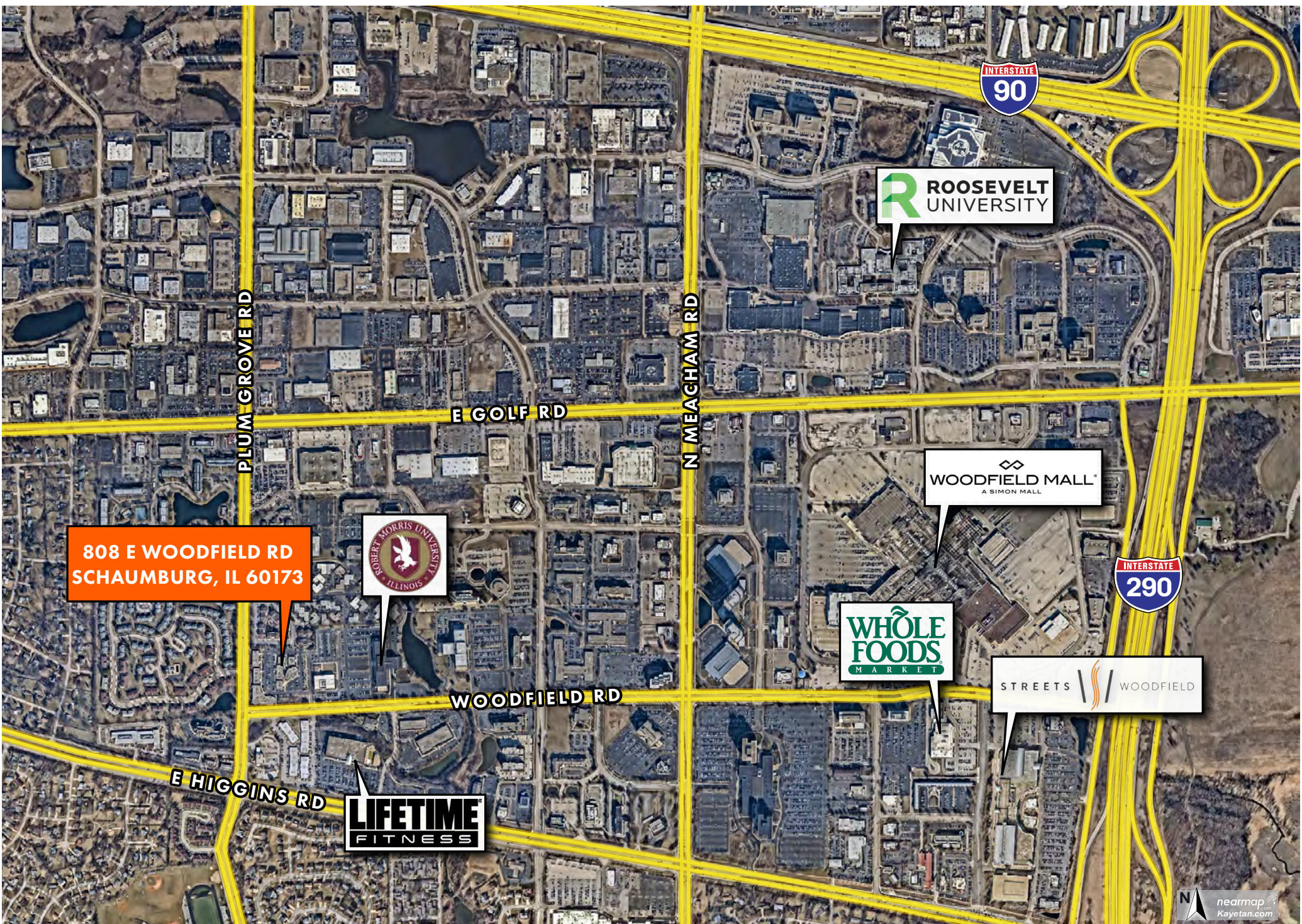
Clockwise from Top Right

- ◆ Office
- ◆ Exam Room
- ◆ Waiting
- ◆ Reception



Floor Plan





808 E WOODFIELD RD
SCHAUMBURG, IL 60173



R ROOSEVELT
UNIVERSITY

WOODFIELD MALL
A SIMON MALL

**WHOLE
FOODS**
MARKET

STREETS // WOODFIELD

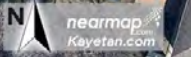
**LIFETIME
FITNESS**



PLUM GROVE RD

WOODFIELD RD

SUITE 200



Disclaimer

The information contained in the memorandum has been obtained from sources we believe to be reliable; however, Landmark Partners Commercial Real Estate, LLC, or any of their officers, employees, or agents, has not verified, and will not verify, any of the information contained herein and makes no warranty or representation whatsoever regarding the accuracy or completeness of the information provided. This memorandum does not purport to be all-inclusive or to contain all the information which prospective lessee or purchaser may desire. References to square footage or age are approximate. No legal liability is assumed or shall be implied with respect thereto.

The owner expressly reserves the right at its sole discretion to reject any or all proposals or expressions of interest in the property and to terminate discussions with any party at any time with or without notice.

Agency Disclosure:

Thomas Turk and Eugene "Bud" Gross ("Licensees") of Landmark Partners Commercial Real Estate, LLC are acting solely on behalf of the Owner or Lessor of the real estate and any information given to the Licensees by the Purchaser/Lessee may be disclosed to the Owner/Lessor.

For more information, please contact:

Thomas Turk

Senior Vice President

☎ 847.649.2661

✉ TomTurk@LPcommercial.com

Eugene "Bud" Gross

Director of Investments

☎ 847.649.2663


✉ EGross@LPcommercial.com



LANDMARK PARTNERS
COMMERCIAL REAL ESTATE

1699 E. Woodfield Road | Suite 202 | Schaumburg Illinois 60173

808
E WOODFIELD RD

 nearmap
Kayetan.com