

956 SF OFFICE CONDOMINIUM FOR LEASE**8396 Six Forks Road—Suite 102 Raleigh, NC 27615**

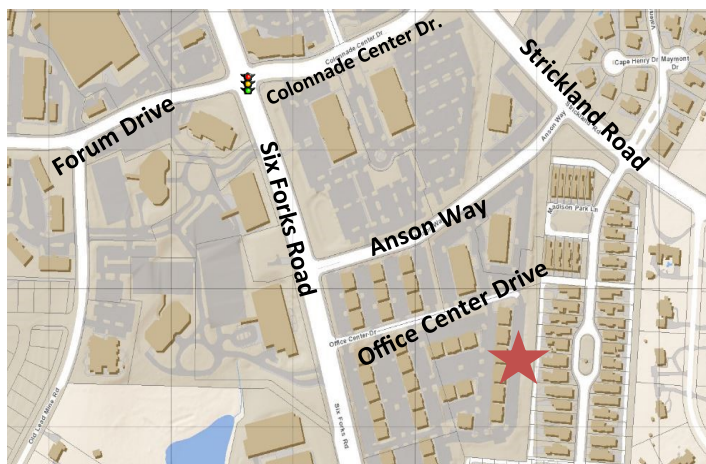
956 SF suite available for lease in popular office Park.

Lease Rate: \$14.50 SF / \$1,155.00 Monthly

Tenant pays electricity, in-suite janitorial and HVAC service agreement. Landlord pays water, dues and taxes.

Layout: Reception, three offices, conference room, kitchenette and restroom.

- New Carpet. New Paint.
- Ground level entry with parking in front of unit.
- Handicapped Accessible
- High speed internet available. Spectrum Business Class.
- Built in 2001. Zoned: OX-3-PL-CU .
- Close to retail, restaurants and banks.
- Available October 1, 2017
- Located in North Raleigh near Strickland Road .
- Walk to Whole Foods and Panera.
- Less than a mile from I-540.

**FOR MORE INFORMATION AND A TOUR CONTACT****Amy Bush**

(919) 272-2047
amybush@kw.com

Keller Williams Realty Cary

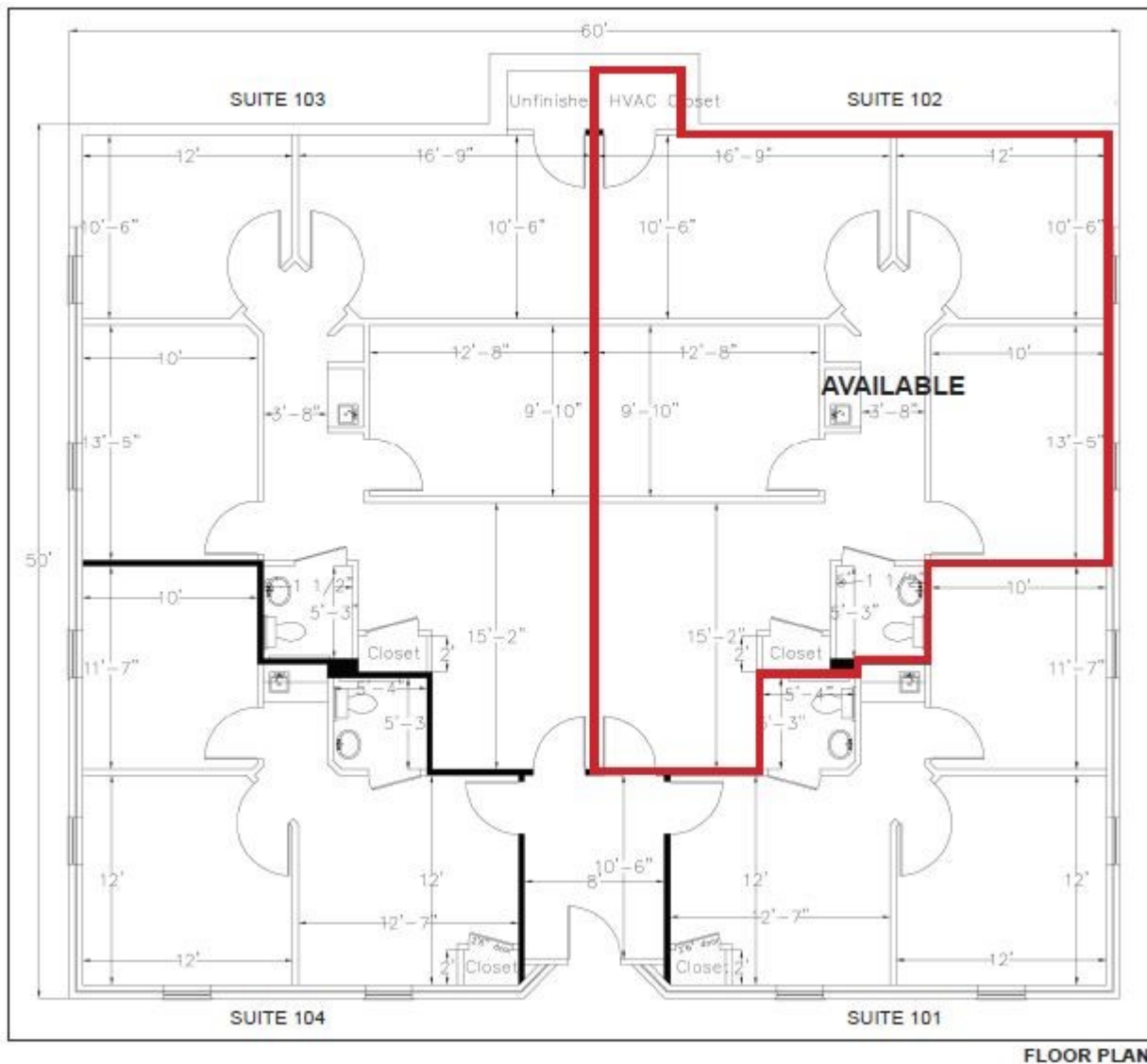
203 Shannon Oaks Circle
Suite 101
Cary, NC 27511

Anna Acerra

(919) 349-5539
annaacerra@kw.com



Website: <http://www.amybushcommercial.com>



FLOOR PLAN

FOR MORE INFORMATION AND A TOUR CONTACT

Amy Bush

(919) 272-2047

amybush@kw.com

Keller Williams Realty Cary

203 Shannon Oaks Circle

Suite 101

Cary, NC 27511

Anna Acerra

(919) 349-5539

annaacerra@kw.com



Website: <http://www.amybushcommercial.com>

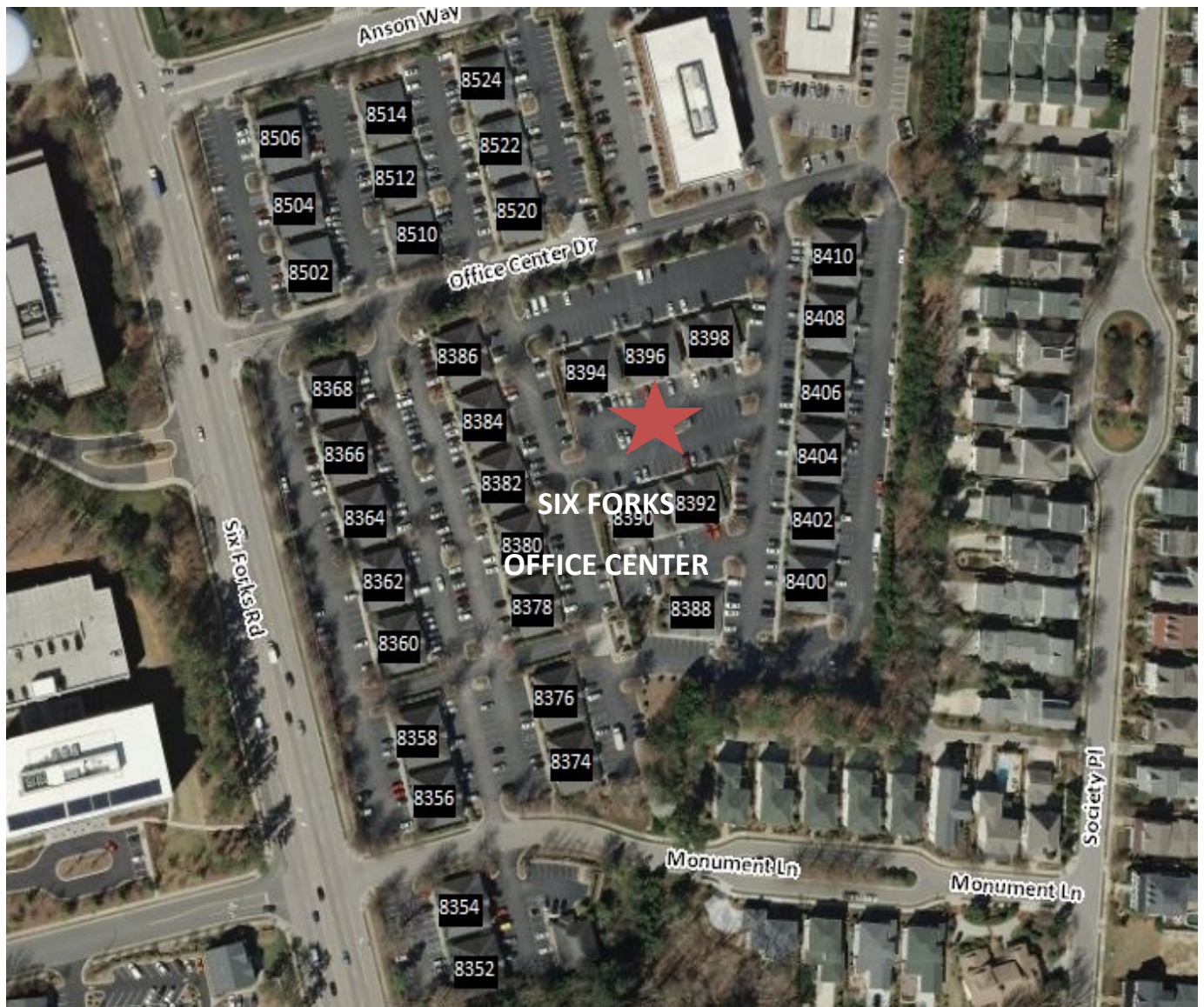
8396 Six Forks Road

Suite 102

Raleigh, NC 27615

956 SF Available

Lease Rate: \$14.50 SF / \$1,155.00 Monthly



FOR MORE INFORMATION AND A TOUR CONTACT

Amy Bush

(919) 272-2047
amybush@kw.com

Keller Williams Realty Cary

203 Shannon Oaks Circle
Suite 101
Cary, NC 27511

Anna Acerra

(919) 349-5539
annaacerra@kw.com



Website: <http://www.amybushcommercial.com>

The information above has been obtained from sources believed to be reliable. While we do not doubt its accuracy, we have not verified it and make no guarantee, warranty or representation about it. It is your responsibility to independently confirm its accuracy and completeness. Any projections, opinions, assumptions or estimates used are for example only and do not represent the current or future performance of the property.