

9th & Howell

SEATTLE | WASHINGTON

BEST-IN-CLASS A OFFICE SPACE IN
THE WESTLAKE TRIANGLE

OFFICE LEASING

TIM O'KEEFE
tim.o'keefe@ngkf.com
425.362.1401

JESSE OTTELE
jesse.ottele@ngkf.com
206.452.4529

CAVAN O'KEEFE
cavan.o'keefe@ngkf.com
206.395.2903

RETAIL LEASING

ANNE MARIE KOEHLER
annemarie.koehler@ngkf.com
206.487.5167

ERIKA KOEHLER
erika.koehler@ngkf.com
206.487.5168

 **Newmark
Knight Frank**



BUILDING HIGHLIGHTS



23-story office tower
totalling 365,000 RSF



Floorplates range from
18,000 to 24,000 RSF



State-of-the-art
building amenities



Efficient center core
floorplate



6 levels underground
secure parking

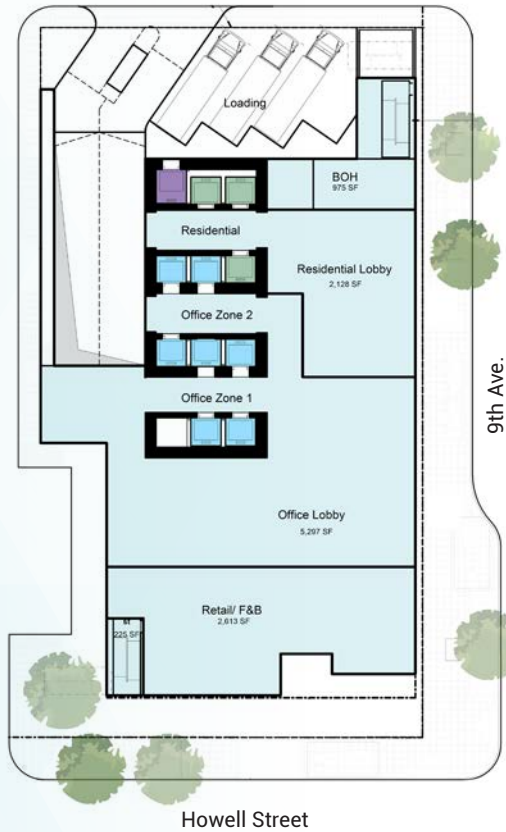
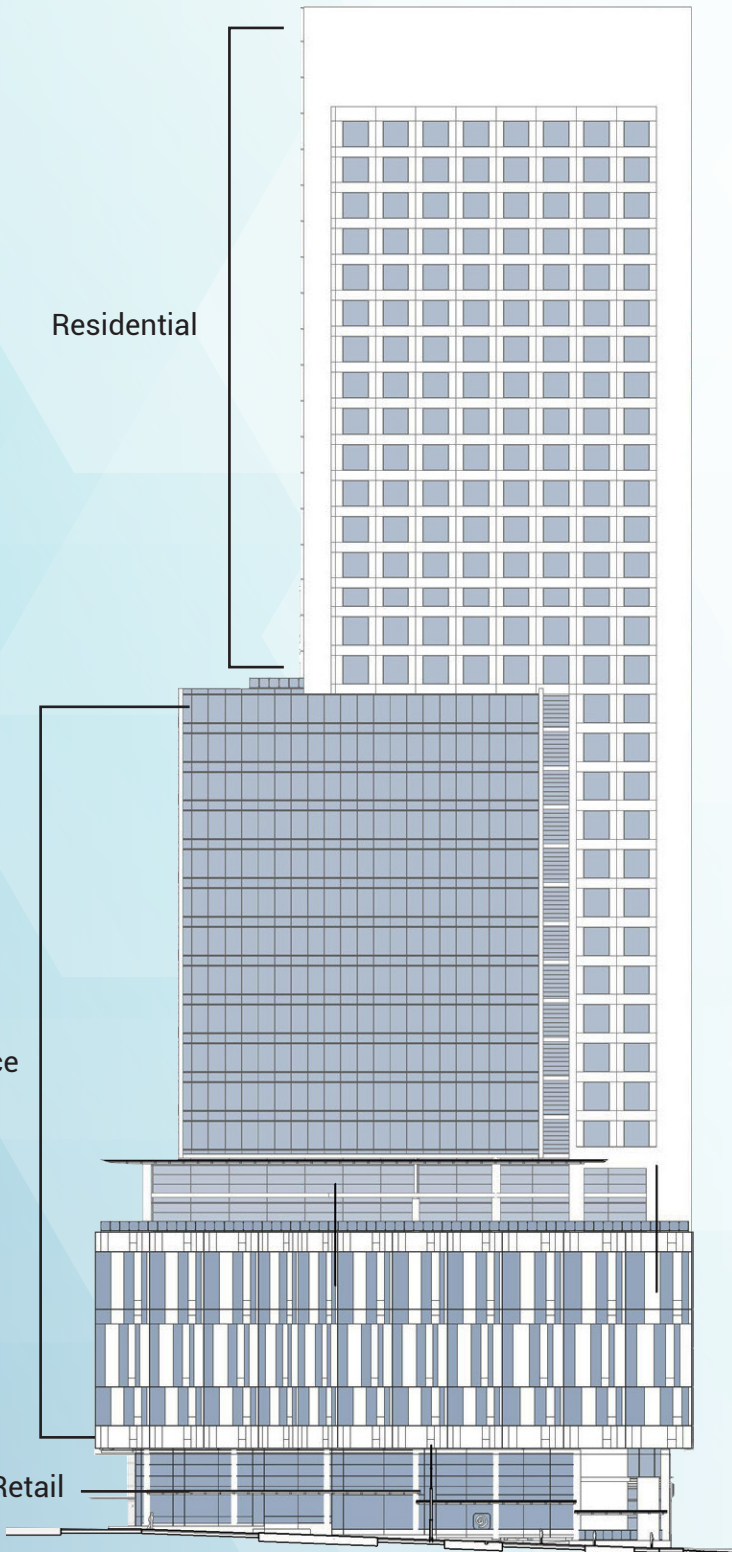


Ground floor retail
and restaurants

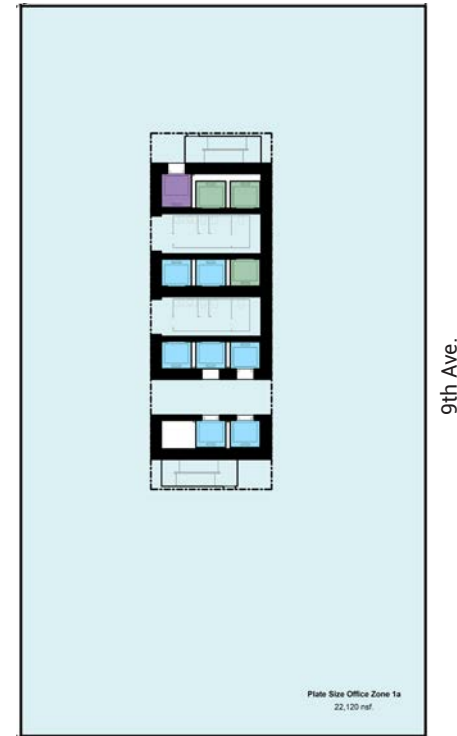
Residential

Office

Lobby/Retail



GROUND LEVEL FLOORPLAN



SAMPLE OFFICE FLOORPLAN

NEIGHBORHOOD HIGHLIGHTS

The 9th & Howell Project is located at the center of Seattle's most enviable neighborhoods: South Lake Union, Capitol Hill, and Downtown. This puts the project at the epicenter of growth and innovation with access to countless amenities and creative public spaces.



40+

RESTAURANTS
within 5 blocks



25+

COFFEE SHOPS
within 5 blocks



15

FITNESS CENTERS
within 1 mile



CONVENTION CENTER EXPANSION

- "Summit" opens in 2022
- 255,000 SF of exhibition space
- 125,000 SF of meeting rooms
- 60,000 SF of ballroom space



PIKE PLACE MARKET

WESTLAKE CENTER

ELLIOTT BAY

9th & Howell

NORDSTROM



PACIFIC PLACE SHOPPING CENTER

HYATT REGENCY SEATTLE

- 45-story hotel
- LEED Gold
- 103,000 SF of meeting and event space
- Dining options: Market, Andare Kitchen & Bar, Daniel's Broiler, The Rickhouse Whiskey Bar



LAKE UNION



TRANSPORTATION OPTIONS



WALK SCORE
99



TRANSIT SCORE
100



BIKE SCORE
89

9th & Howell



- Major Bus Lines
- Link Light Rail
- Seattle Street Car
- Bike Lanes
- Southlake Union Streetcar

9th & Howell

OFFICE LEASING

TIM O'KEEFE
tim.o'keefe@ngkf.com
425.362.1401

JESSE OTTELE
jesse.ottele@ngkf.com
206.452.4529

CAVAN O'KEEFE
cavan.o'keefe@ngkf.com
206.395.2903

RETAIL LEASING

ANNE MARIE KOEHLER
annemarie.koehler@ngkf.com
206.487.5167

ERIKA KOEHLER
erika.koehler@ngkf.com
206.487.5168



The distributor of this communication is performing acts for which a real estate license is required. The information contained herein has been obtained from sources deemed reliable but has not been verified and no guarantee, warranty or representation, either express or implied, is made with respect to such information. Terms of sale or lease and availability are subject to change or withdrawal without notice. 18-1023