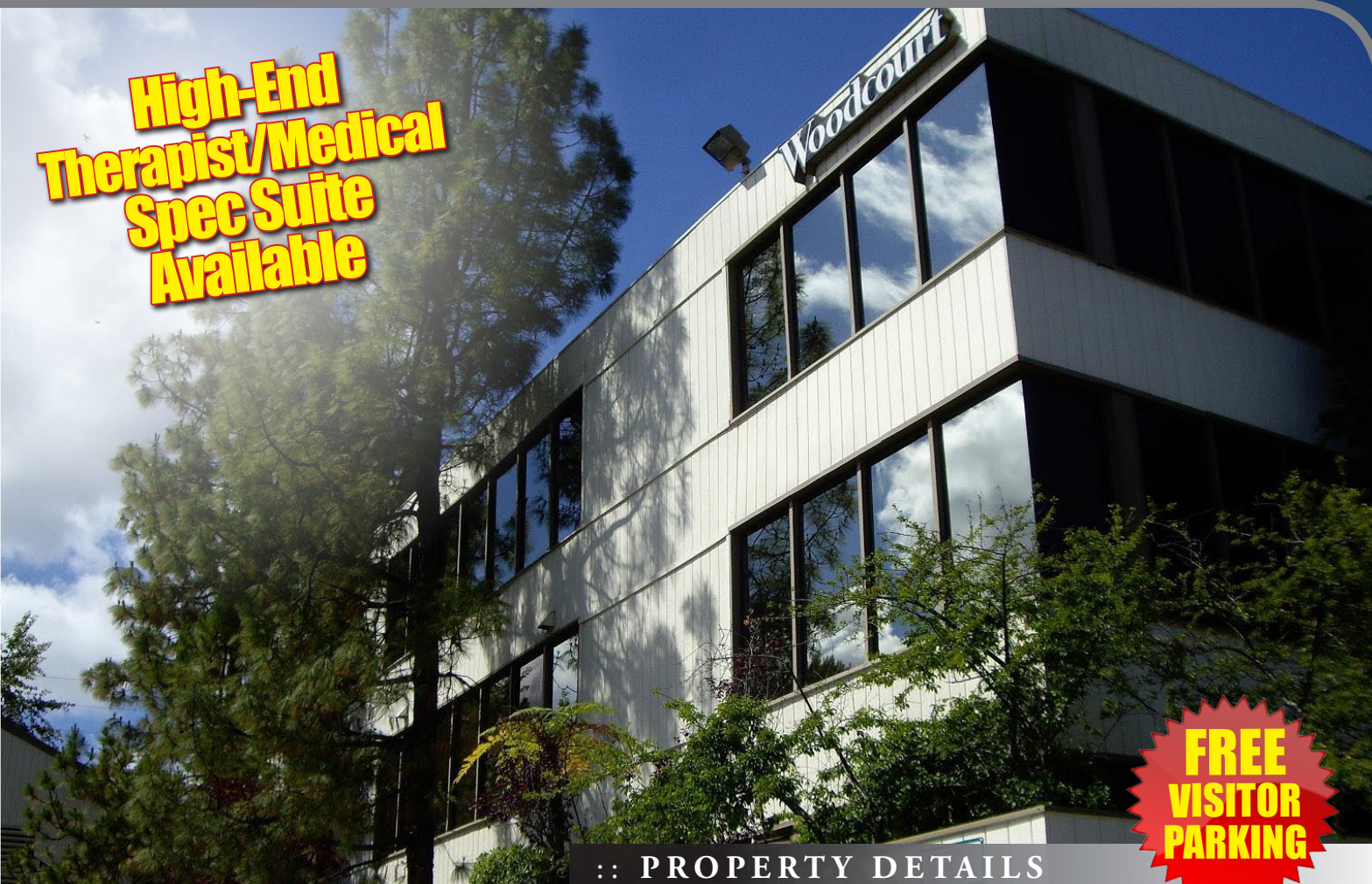


WOODCOURT

SUITE 126 • 20301 VENTURA BLVD., WOODLAND HILLS, CA

FOR LEASE

**High-End
Therapist/Medical
Spec Suite
Available**



**FREE
VISITOR
PARKING**

:: PROPERTY DETAILS

Location: 20301 Ventura Blvd., Woodland Hills, CA

Availability: Suite 126 - 3,218 RSF

Rental Rate: \$2.75-\$2.95/RSF Full Service Gross
Tenant shall be responsible for janitorial on medical leases.

Parking: 5:1,000 SF with Free Visitor Parking
(Covered \$66/mo. | Surface \$44/mo.)



:: AMENITIES

- High-End Therapist/Medical Spec Suite
- All Walls to Slab Above for Privacy
- Kitchen/Break Room
- Alert Lighting System
- Mix of Private & Group Rooms
- Plenty of Services and Restaurants Nearby
- Within Close Proximity to all Major Transportation Corridors
- Prominent Ventura Blvd. Address
- Private Patio



REGIONAL MAP

For more information please contact:

JAY RUBIN, PRINCIPAL
818.223.4385
jrubin@lee-re.com
www.JayRubin-RE.com
License ID #01320005

Lee & Associates®
COMMERCIAL REAL ESTATE SERVICES
No warranty or representation is made to the accuracy of the foregoing information. Terms of sale or lease and availability are subject to change or withdrawal without notice. Rev. 07-05-2012

WOODCOURT

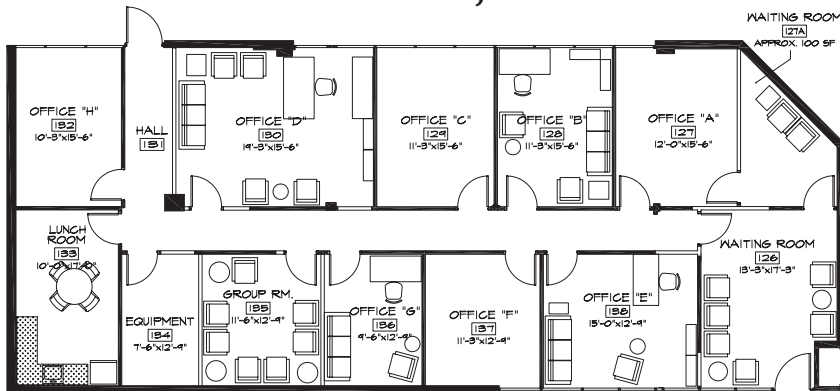
SUITE 126 • 20301 VENTURA BLVD., WOODLAND HILLS, CA

FOR LEASE



:: FLOORPLAN ::

SUITE 126: 3,218 RSF



Note: Not to Scale

For more information please contact:

JAY RUBIN, PRINCIPAL
818.223.4385
jrubin@lee-re.com
www.JayRubin-RE.com
License ID #01320005

