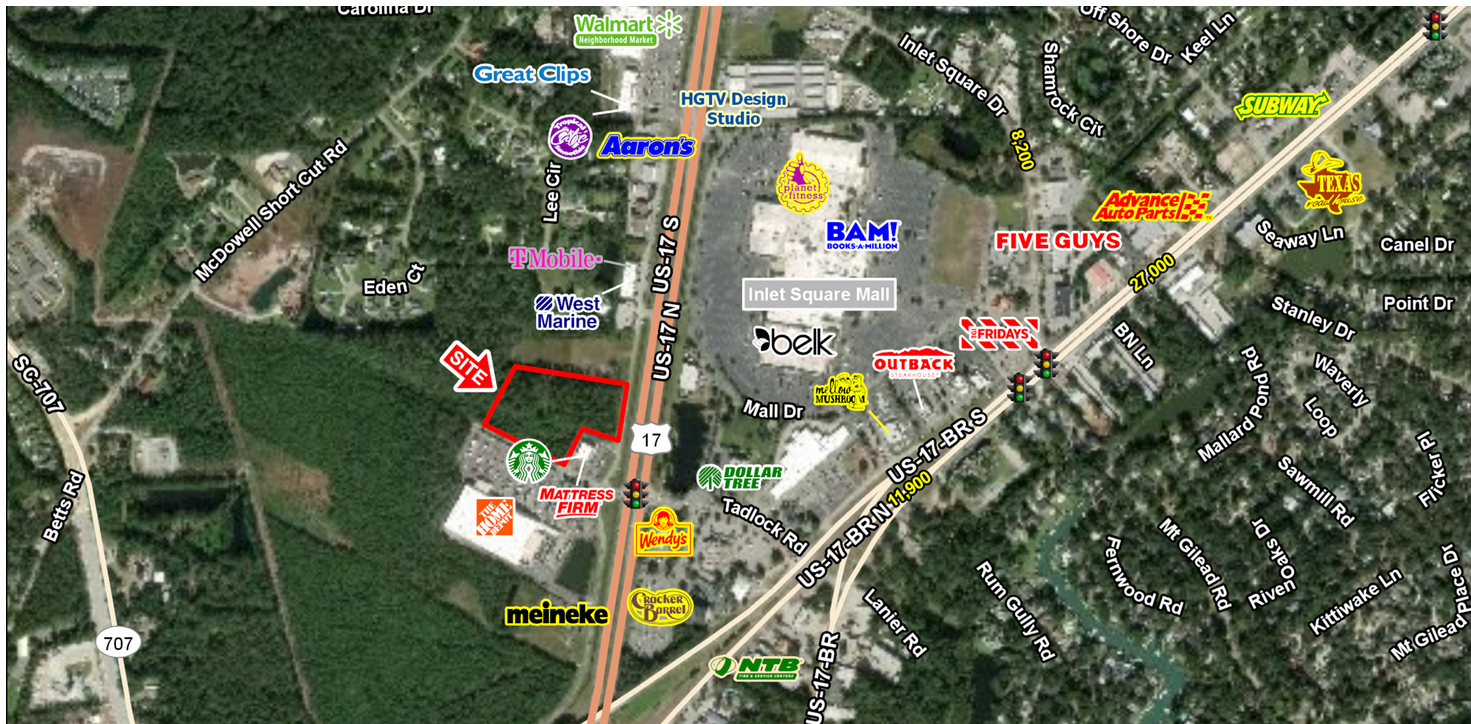


# MURRELLS INLET RETAIL DEVELOPMENT

Hwy 17 Bypass & Tadlock Drive, Murrells Inlet, SC 29576

## EXECUTIVE SUMMARY



## LOCATION OVERVIEW

High Profile front row planned retail development adjacent to new Starbucks and across the street from The Home Depot & Inlet Square Mall redevelopment



## PROPERTY HIGHLIGHTS

- Shop space available between 2,400 – 5,200 SF
- 3.03 acres- Second Row Land available (can be subdivided)
- Nearby businesses include Belk, Planet Fitness, Books A Million, Walmart Neighborhood Market, Mellow Mushroom, and AT&T
- TRAFFIC COUNTS:
  - Hwy 17 Bypass N- 36,100 AADT (3.25 miles N of site)
  - Hwy 17 Bypass S- 11,900 AADT
  - Inlet Square Drive- 8,200 AADT

## DEMOGRAPHICS

	7 MINUTES	10 MINUTES	15 MINUTES
2018 Total Population	20,073	42,413	70,083
2018 Total Households	9,708	19,653	31,787
2018 Median HH Income	\$51,184	\$51,396	\$52,676

## EXCLUSIVE AGENT(S)

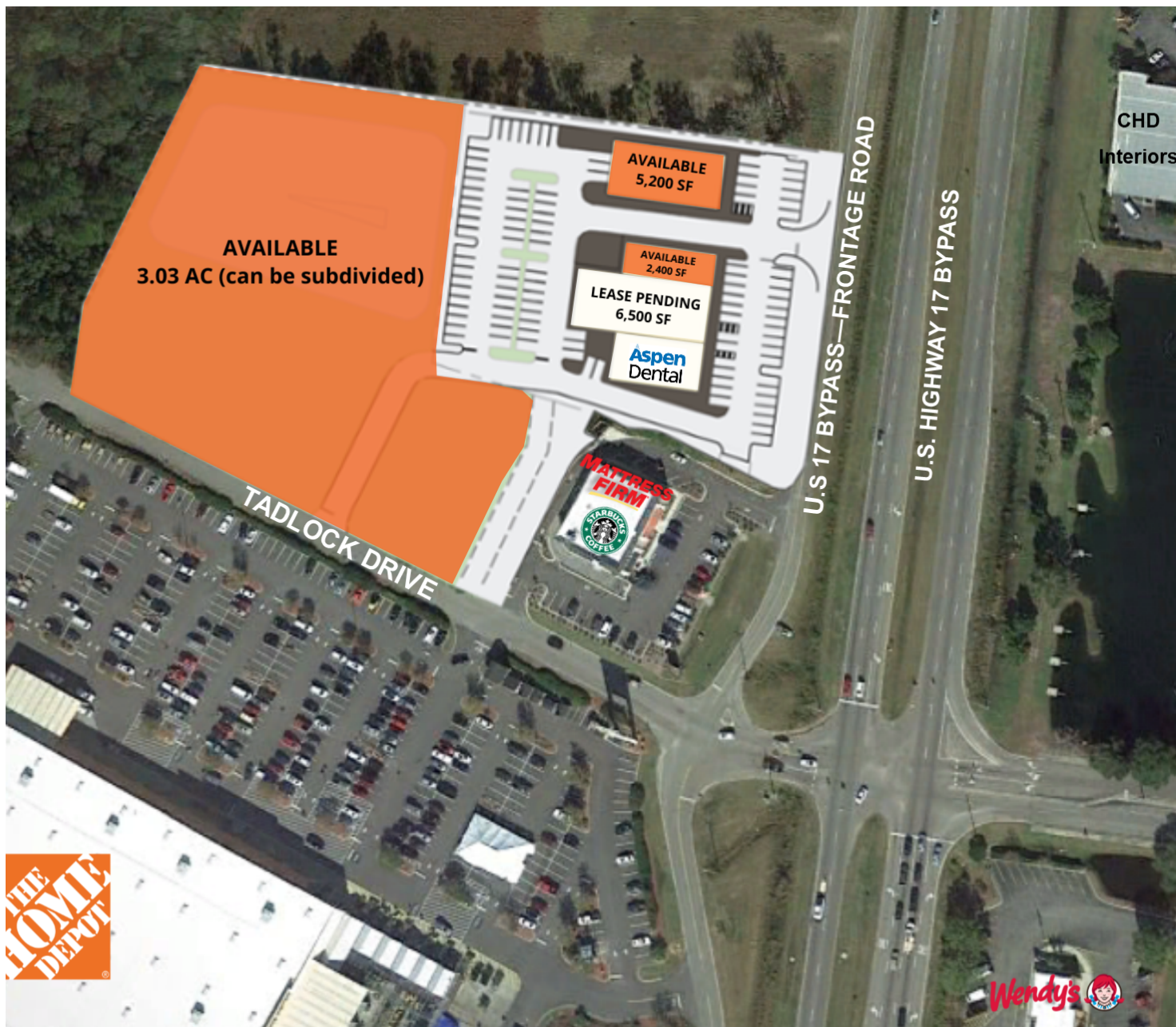
JEFF YURFEST, CCIM • [jeff.yurfest@tscg.com](mailto:jeff.yurfest@tscg.com) • 843.723.3054  
 DARRELL PALASCIANO • [darrell.palasciano@tscg.com](mailto:darrell.palasciano@tscg.com) • 704.335.5455  
 MATT HENRY • [matt.henry@tscg.com](mailto:matt.henry@tscg.com) • 704.335.5455



# MURRELLS INLET RETAIL DEVELOPMENT

Hwy 17 Bypass & Tadlock Drive, Murrells Inlet, SC 29576

## SITE PLAN



### EXCLUSIVE AGENT(S)

JEFF YURFEST, CCIM • [jeff.yurfest@tscg.com](mailto:jeff.yurfest@tscg.com) • 843.723.3054

DARRELL PALASCIANO • [darrell.palasciano@tscg.com](mailto:darrell.palasciano@tscg.com) • 704.335.5455

MATT HENRY • [matt.henry@tscg.com](mailto:matt.henry@tscg.com) • 704.335.5455