

BLOOMSBURG PLAZA

ROUTE 11 & CENTRAL ROAD, BLOOMSBURG, PA

±3,000 - 33,700 SF AVAILABLE FOR LEASE

JOIN



property highlights.

- Highly visible junior anchor and small shop retail space available for lease
- Situated on main commercial/retail corridor (Route 11)
- Located directly on Route 11 (Columbia Blvd) on Bloomsburg's main artery into town
- Ample parking for grocery, fitness, medical users, etc.
- Total GLA: ±126,742 SF



stats.

2019 DEMOGRAPHICS*	1 MILE	3 MILES	5 MILES
EST. POPULATION	2,855	22,628	30,633
EST. HOUSEHOLDS	1,274	8,312	11,540
EST. AVG. HH INCOME	\$81,009	\$63,722	\$66,853

ROUTE 11 TRAFFIC COUNT: 15,000 VPD *ESRI 2019



METRO
COMMERCIAL
REAL ESTATE, INC.

MetroCommercial.com | PHILADELPHIA, PA | PLYMOUTH MEETING, PA | MOUNT LAUREL, NJ | NAPLES, FL | MIAMI, FL

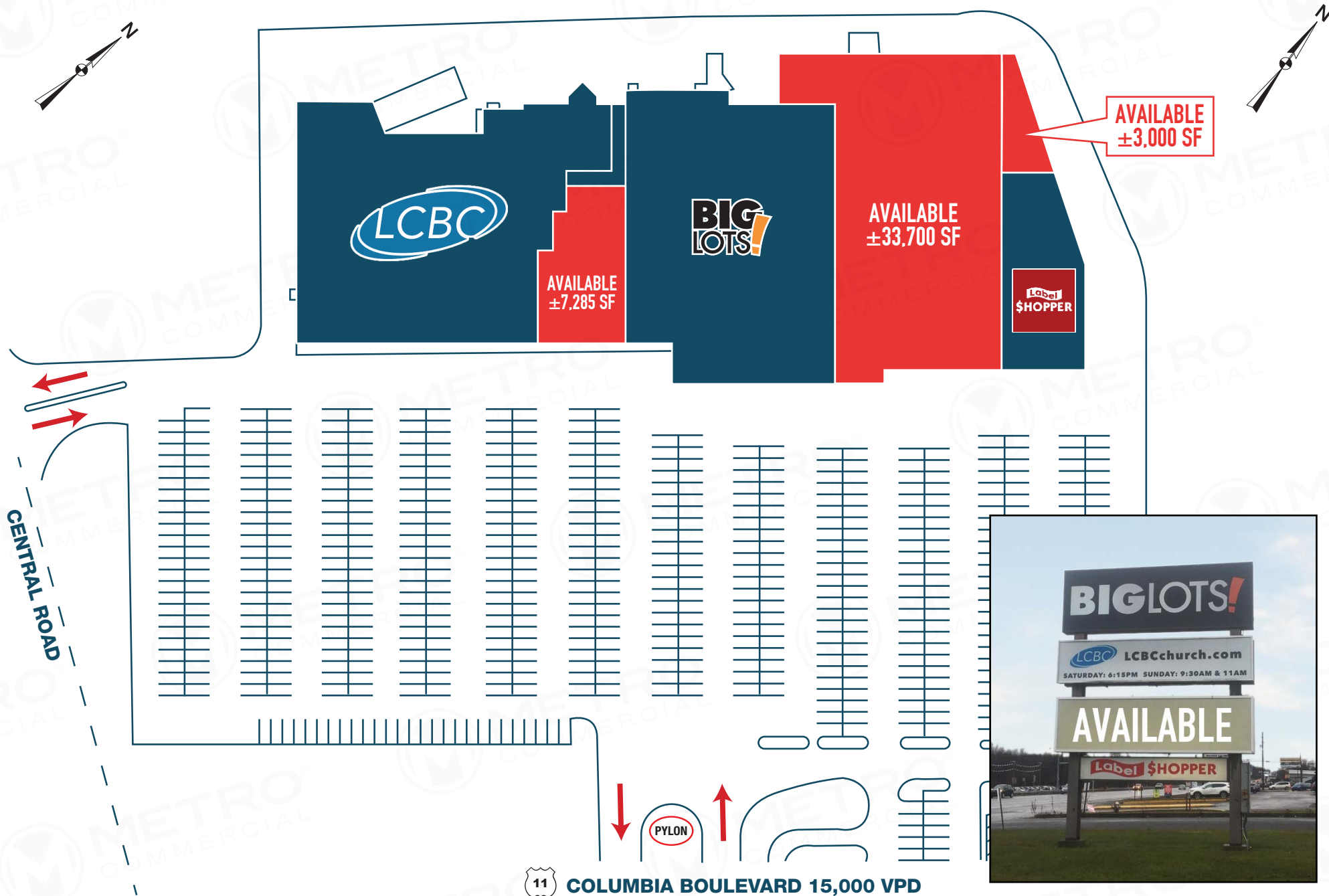
get in touch.

PAT GALLAGHER

office 610.825.5222
direct 610.260.2676
pgallagher@metrocommercial.com

SAMUEL THIERS

office 610.825.5222
direct 610.260.2665
sthiers@metrocommercial.com



The information and images contained herein are from sources deemed reliable. However, Metro Commercial Real Estate, Inc. makes no representation whatsoever as to their accuracy or authenticity. Images shown may be modified for illustrative purposes. Images may be out-of-date and not current. 1.12.20
The information and images contained herein are from sources deemed reliable. However, Metro Commercial Real Estate, Inc. makes no representation whatsoever as to their accuracy or authenticity. Images shown may be modified for illustrative purposes. Images may be out-of-date and not current. 1.16.20

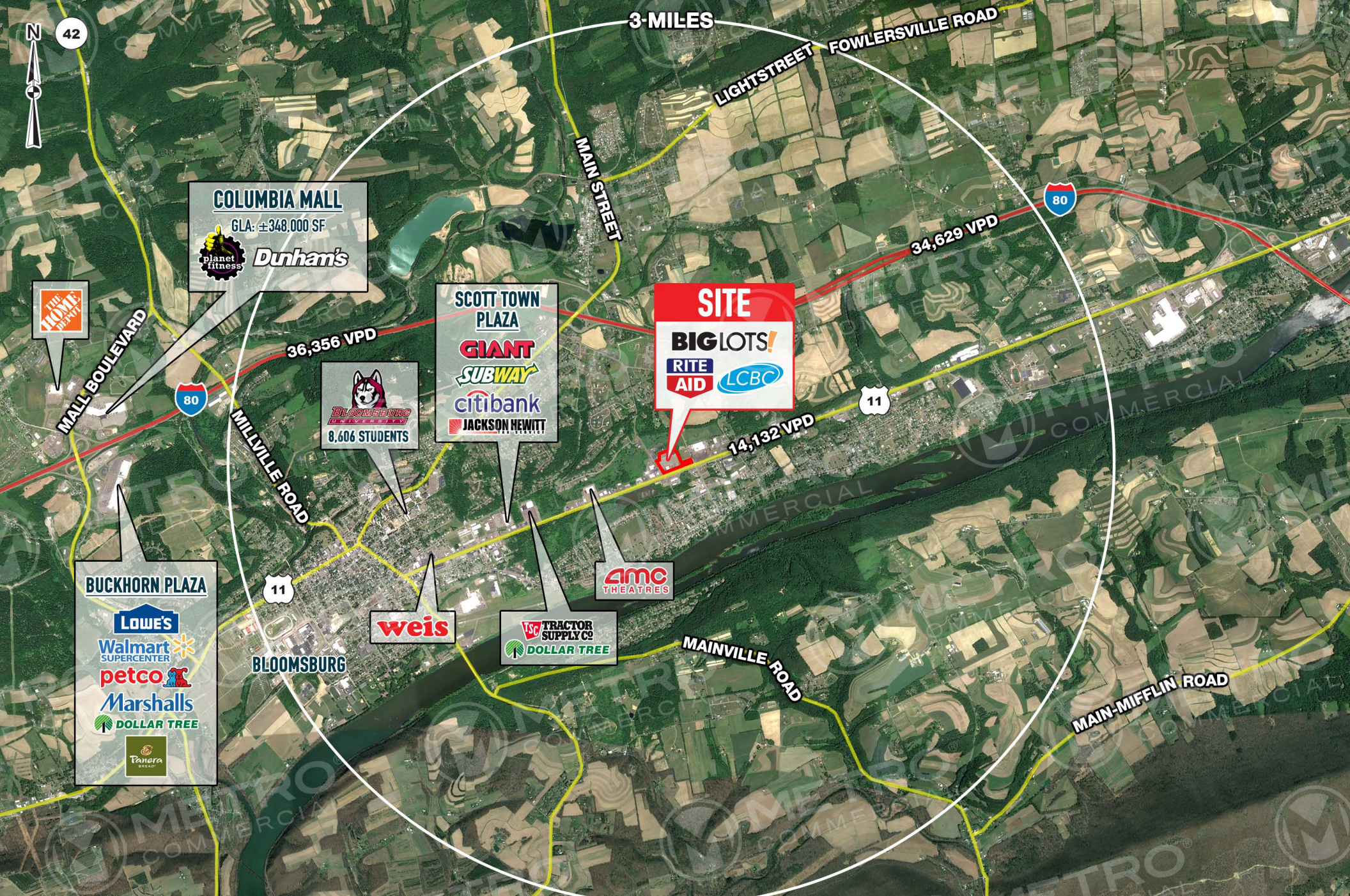
ROUTE 11 & CENTRAL ROAD
BLOOMSBURG, PA





The information and images contained herein are from sources deemed reliable. However, Metro Commercial Real Estate, Inc. makes no representation whatsoever as to their accuracy or authenticity. Images shown may be modified for illustrative purposes. Images may be out-of-date and not current. 1.16.20

ROUTE 11 & CENTRAL ROAD BLOOMSBURG, PA



The information and images contained herein are from sources deemed reliable. However, Metro Commercial Real Estate, Inc. makes no representation whatsoever as to their accuracy or authenticity. Images shown may be modified for illustrative purposes. Images may be out-of-date and not current. 1.16.20

ROUTE 11 & CENTRAL ROAD BLOOMSBURG, PA



The information and images contained herein are from sources deemed reliable. However, Metro Commercial Real Estate, Inc. makes no representation whatsoever as to their accuracy or authenticity. Images shown may be modified for illustrative purposes. Images may be out-of-date and not current. 1.16.20

ROUTE 11 & CENTRAL ROAD
BLOOMSBURG, PA

