

CEDAR GROVE PARK

14412 CEDAR GROVE RD SE
ISSAQUAH, WA

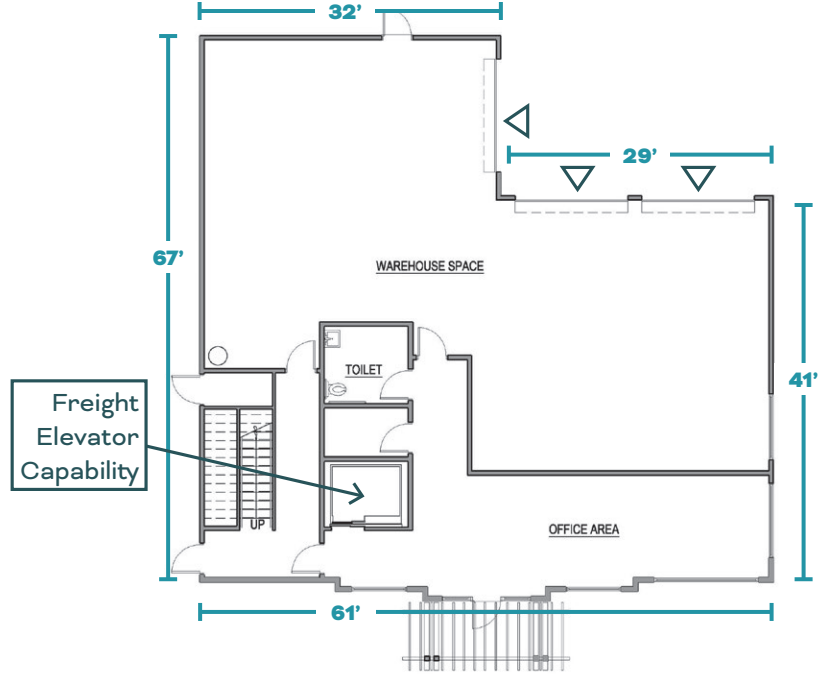
FOR SALE

BUILDING C

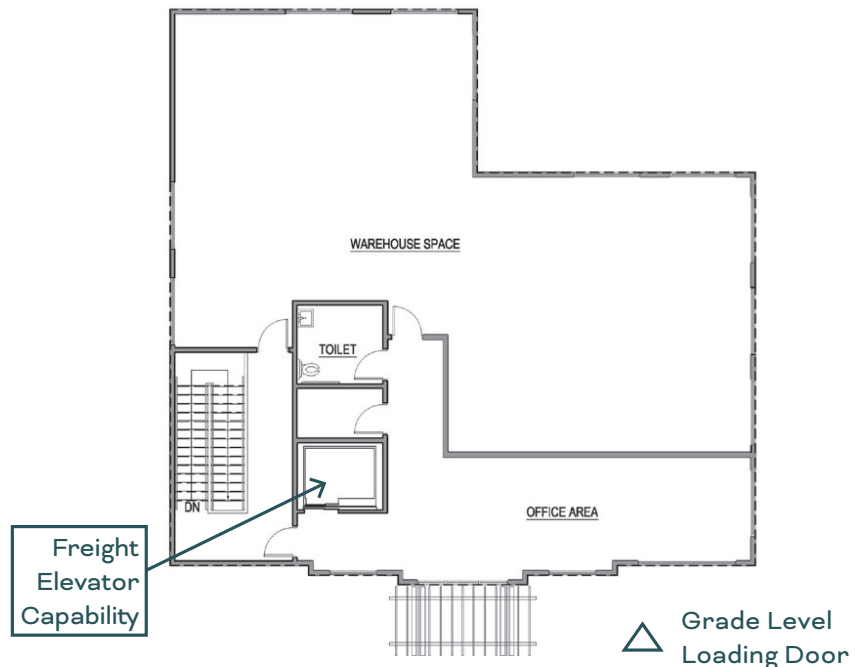
BUILDING FEATURES

| | |
|--------------------------|--|
| Size: | 6,144 SF |
| Delivery: | Shell complete, buyer can occupy within 90 days |
| Clear Height: | Floor 1: 15' Floor 2: 13' |
| Power: | 400 amps, 3-phase, 120/208V |
| Parking: | 13 stalls |
| Fire Suppression: | ESFR |
| Loading: | 3 oversized grade level doors with ability to add a freight elevator |
| Office: | Office improvements are partially complete and can be modified to suit buyer needs |
| Purchase Price: | \$2,730,000 |

Bldg. C, Floor 1: 3,072 SF



Bldg. C, Floor 2: 3,072 SF



CONNOR GILCHRIST
425.274.4286
gilchrist@broderickgroup.com

RAWLEY HOLMBERG
425.274.4284
holmberg@broderickgroup.com

STEVE HENDERSON
425.646.5248
henderson@broderickgroup.com