



ChaneyBrooks

WAREHOUSE AVAILABLE FOR LEASE

# 98-736 MOANALUA LOOP

PEARL CITY, HI 96701



## PROPERTY DETAILS

<b>TMK</b>	(1) 9-8-13-20	<b>Rent</b>	\$7,900/Mo
<b>Location</b>	Pearl City	<b>CAM</b>	\$1,600/Mo
<b>Available</b>	4,800 SF Warehouse 2,500 SF Yard	<b>Zoning</b>	I-2

# PERFECT CENTRAL LOCATION

- EASY INGRESS/EGRESS
- YARD SPACE
- CENTRAL LOCATION
- HIGH CUBE
- BUILT-OUT OFFICE SPACE
- TWO 12X10 ROLL UP DOORS

## CONTACT US FOR MORE INFORMATION

**ANTHONY PROVENZANO (B), CCIM, SIOR**  
+1 808 387 3444  
aprovenzano@chaneybrooks.com

**KELLY A. VEA (S)**  
+1 808 489 2703  
kvea@chaneybrooks.com

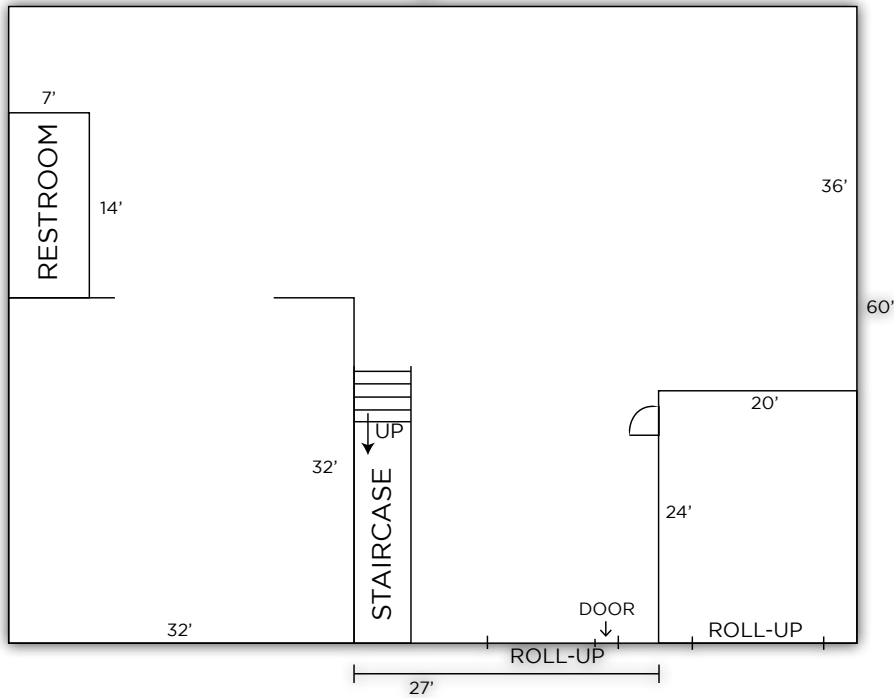
[www.chaneybrooks.com](http://www.chaneybrooks.com)

1440 Kapiolani Boulevard Suite 1010, Honolulu, Hawaii 96814

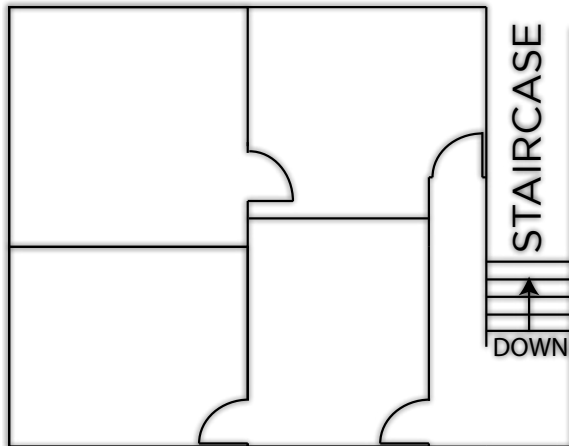
*Independently Owned and Operated / A Member of the Cushman & Wakefield Alliance*

©2018 Cushman & Wakefield ChaneyBrooks. All rights reserved. The information contained in this communication is strictly confidential. This information has been obtained from sources believed to be reliable but has not been verified. NO WARRANTY OR REPRESENTATION, EXPRESS OR IMPLIED, IS MADE AS TO THE CONDITION OF THE PROPERTY (OR PROPERTIES) REFERENCED HEREIN OR AS TO THE ACCURACY OR COMPLETENESS OF THE INFORMATION CONTAINED HEREIN, AND SAME IS SUBMITTED SUBJECT TO ERRORS, OMISSIONS, CHANGE OF PRICE, RENTAL OR OTHER CONDITIONS, WITHDRAWAL WITHOUT NOTICE, AND TO ANY SPECIAL LISTING CONDITIONS IMPOSED BY THE PROPERTY OWNER(S). ANY PROJECTIONS, OPINIONS OR ESTIMATES ARE SUBJECT TO UNCERTAINTY AND DO NOT SIGNIFY CURRENT OR FUTURE PROPERTY PERFORMANCE.

First Floor



Second Floor



**PROPERTY DESCRIPTION**

Don't miss out on this opportunity to lease warehouse and yard space together at a great location. Easy access to Kamehameha Highway and the H1. Located near Pearlridge Shopping Center, Best Buy, and Ashley Homestore Furniture.

Two 12'x10' roll up doors with a 20' ceiling height. Approximately 1,000 SF of office space with four separate offices.

Grow and expand your business at this great location!

**CONTACT US FOR MORE INFORMATION**

**ANTHONY PROVENZANO (B), CCIM, SIOR**  
+1 808 387 3444  
aprovenzano@chaneybrooks.com

**KELLY A. VEA (S)**  
+1 808 489 2703  
kvea@chaneybrooks.com

\*Measurements are just estimates and should be verified