

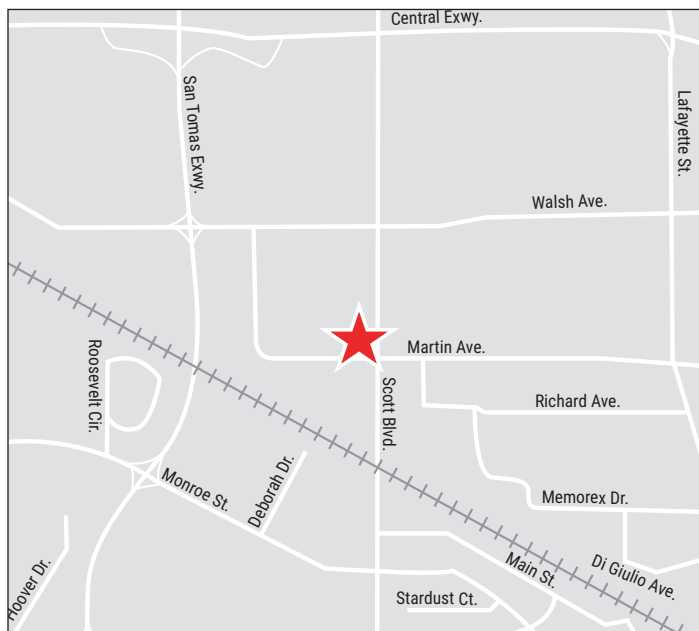
Kinco Property Available

2065 Martin Avenue, Suite 102
Santa Clara, California



Property Size: ±2,234 SF

As exclusive agent(s), we are pleased to offer the following space:



- ◆ ±70% Drop Ceiling Office Area
- ◆ ±30% Manufacturing/Warehouse Area
- ◆ Reception Area
- ◆ Three (3) Private Offices
- ◆ Open Office Area
- ◆ Two (2) Restrooms
- ◆ Lunch Bar
- ◆ One (1) Grade Level Truck Door
- ◆ Combo Lock Box to Tour



Frank Cox 408.982.8422 fcx@ngkf.com CA RE License #00889881

3055 Olin Avenue, Suite 2200, San Jose, CA 95128

www.ngkf.com

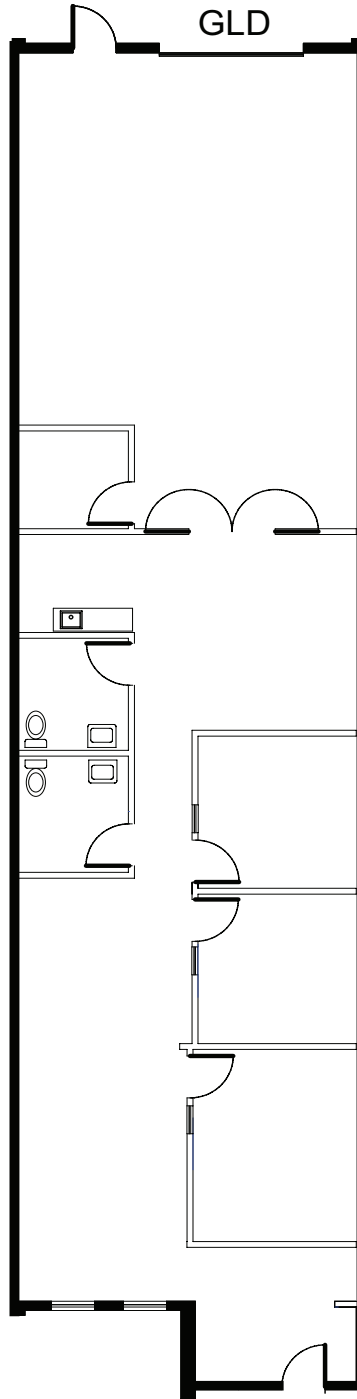
The distributor of this communication is performing acts for which a real estate license is required. The information contained herein has been obtained from sources deemed reliable but has not been verified and no guarantee, warranty or representation, either express or implied, is made with respect to such information. Terms of sale or lease and availability are subject to change or withdrawal without notice.

05-1491 • 08/19

Kinco Property Available

2065 Martin Avenue, Suite 102
Santa Clara, California

Floor Plan | ±2,234 SF (not to scale)



Frank Cox 408.982.8422 fcx@ngkf.com CA RE License #00889881

3055 Olin Avenue, Suite 2200, San Jose, CA 95128

www.ngkf.com

The distributor of this communication is performing acts for which a real estate license is required. The information contained herein has been obtained from sources deemed reliable but has not been verified and no guarantee, warranty or representation, either express or implied, is made with respect to such information. Terms of sale or lease and availability are subject to change or withdrawal without notice.

05-1491 • 08/19