



LAND For Sale

Location: James L. Hart Parkway
Side of Street: North
Lot Number: #21
City: Ypsilanti/Twp., MI
Build-to-Suit: Industrial, Lt. Industrial
Park Name: Washtenaw Business Park
Cross Streets: S. of I-94; W. of Huron Street
County: Washtenaw

Acres: 6.56
Zoning: I-1, Lt. Industrial
Improvements: N/A
Dimensions:

UTILITIES

Sanitary Sewer: Yes
Storm Sewer: Yes
Water: Yes
Gas: Yes
Outside Storage: No
Rail Siding: No

ADJACENT LAND

North:
South:
East:
West:

PRICING INFORMATION

Asking Price: \$428,630.40
Per Acre: \$65,340.00
Per SqFt : \$1.50
Terms: Cash
Parcel #: K-11-17-363-021
Assessor Number: N/A
Taxes: \$14,279.12 (2018)

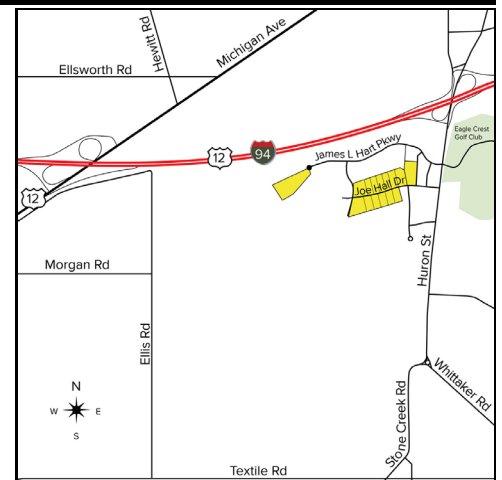
TRAFFIC INFORMATION

Yr: 2017 Count: 31,031 Huron St./Huron River Dr. & I-94
Yr: 2017 Count: 39,206 Huron St./ I-94 & Harriet St.
Yr: 2017 Count: 89,507 I-94 E. of Huron St
Yr: 2017 Count: 92,732 I-94 W. of Huron St.

DEMOGRAPHICS

	Population	Median HH Income
1 Mile Radius	5,408	\$33,865
3 Mile Radius	79,328	\$55,785
5 Mile Radius	131,563	\$61,107

Comments: Quick easy expressway access via I-94 and Huron Street interchange.



Broker: SIGNATURE ASSOCIATES

Agent(s):

Steve Gordon, (248) 948-0101, sgordon@signatureassociates.com
 Jay Chavey, (248) 948-4196, jchavey@signatureassociates.com