

FOR SALE

3122 Wade Hampton Blvd Taylors, SC 29687

NAI Earle Furman

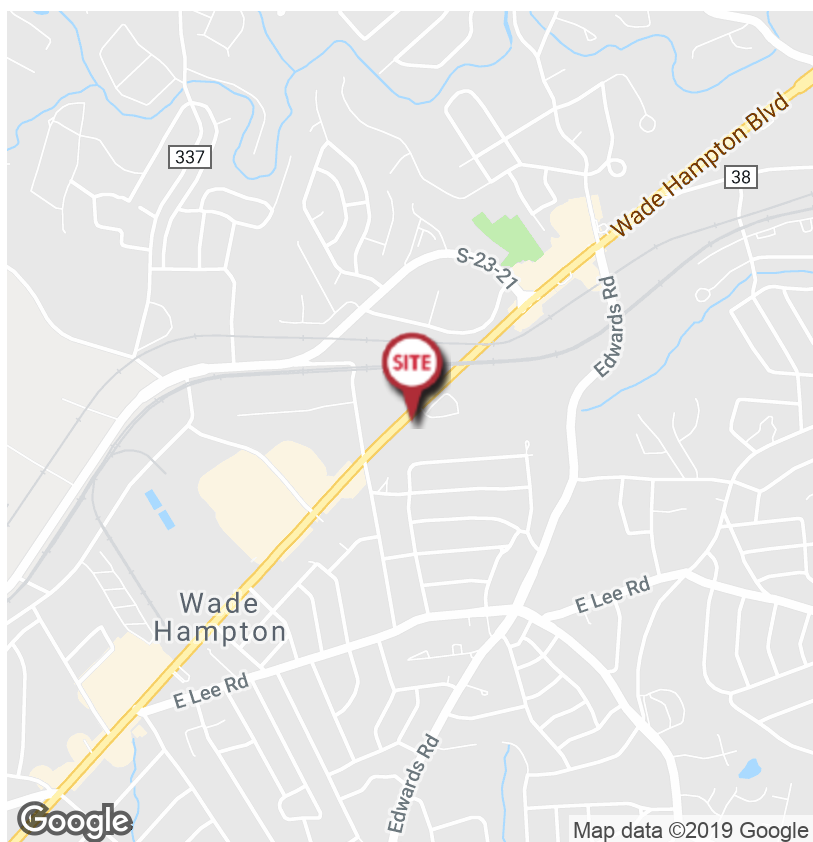


Office | 5,500 SF

- ±1.16 Acres
- ±225 LFT frontage on Wade Hampton Blvd
- Zoned: C-2 Greenville County
- Tax map # T031000300509
- Traffic count: 34,800 vpd
- Sale price: \$550,000

Demographics	1 Mile	3 Miles	5 Miles
Total Population:	6,474	48,930	122,331
Average HH Income:	\$50,754	\$60,621	\$66,071

No Warranty Or Representation, Express Or Implied, Is Made As To The Accuracy Of The Information Contained Herein, And The Same Is Submitted Subject To Errors, Omissions, Change Of Price, Rental Or Other Conditions, Prior Sale, Lease Or Financing, Or Withdrawal Without Notice, And Of Any Special Listing Conditions Imposed By Our Principals No Warranties Or Representations Are Made As To The Condition Of The Property Or Any Hazards Contained Therein Are Any To Be Implied.



✉ **Scott Jones, SIOR**
+1 864 678 5921
sjones@naiearlefurman.com

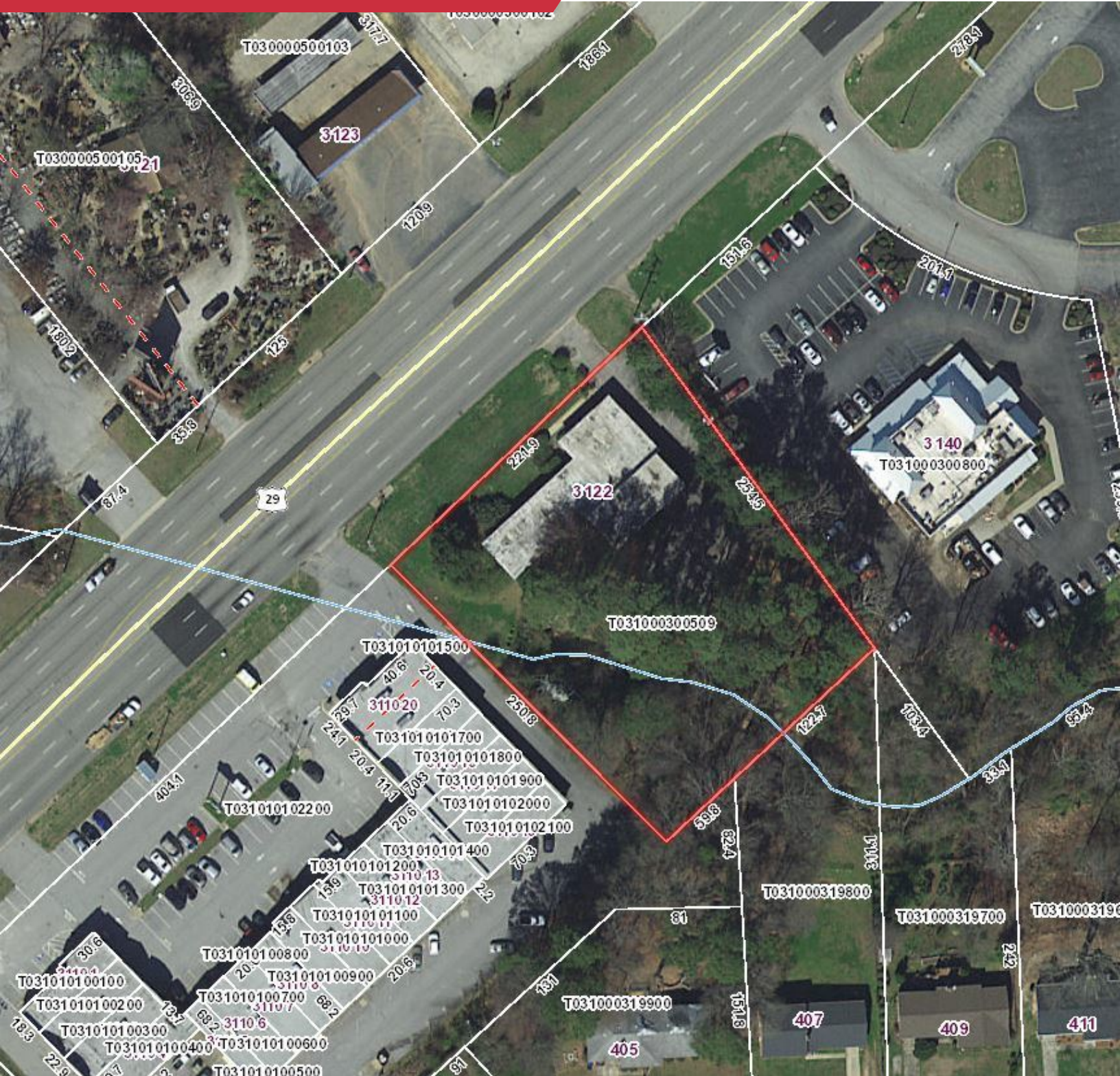
✉ **John Stathakis, II**
+1 864 678 5931
jstathakis@naiearlefurman.com

No Warranty Or Representation, Express Or Implied, Is Made As To The Accuracy Of The Information Contained Herein, And The Same Is Submitted Subject To Errors, Omissions, Change Of Price, Rental Or Other Conditions, Prior Sale, Lease Or Financing, Or Withdrawal Without Notice, And Of Any Special Listing Conditions Imposed By Our Principals No Warranties Or Representations Are Made As To The Condition Of The Property Or Any Hazards Contained Therein Are Any To Be Implied.

📍 **101 E Washington St**
Greenville, SC 29601
naief.com

FOR SALE

3122 Wade Hampton Blvd Taylors, SC 29687



✉ **Scott Jones, SIOR**
+1 864 678 5921
sjones@naearlefurman.com

✉ **John Stathakis, II**
+1 864 678 5931
jstathakis@naearlefurman.com

No Warranty Or Representation, Express Or Implied, Is Made As To The Accuracy Of The Information Contained Herein, And The Same Is Submitted Subject To Errors, Omissions, Change Of Price, Rental Or Other Conditions, Prior Sale, Lease Or Financing, Or Withdrawal Without Notice, And Of Any Special Listing Conditions Imposed By Our Principals. No Warranties Or Representations Are Made As To The Condition Of The Property Or Any Hazards Contained Therein Are Any To Be Implied.

NAI Earle Furman