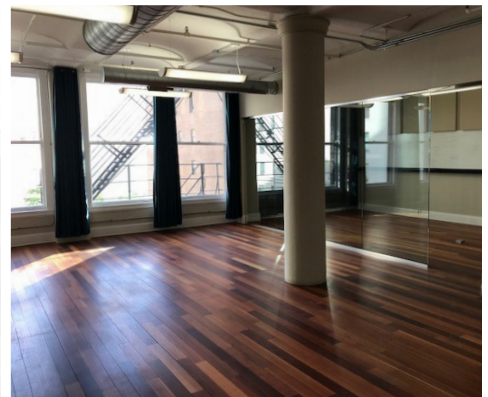
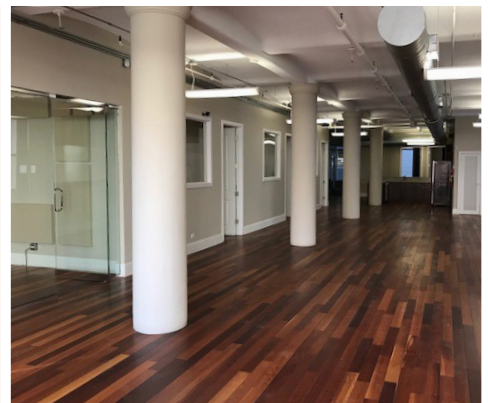




404 & 412

SOUTH WELLS



MOVE-IN READY LOFT OFFICE SPACE

FINISHED FULL FLOORS OF 4,000-12,000 SF

- Hardwood floors, kitchens & private restrooms in all suites
- Short distance to commuter train stations
- Full floors of 4,000 SF or 6,000 SF with a variety of configurations
- Tenant controlled HVAC
- Great light & views
- Windows on four sides at 412 S Wells & three sides at 404 S Wells

PRICED TO MOVE AT \$25/SF MG

FOR MORE INFORMATION OR TO ARRANGE AN INSPECTION PLEASE CONTACT:

ANDY DEMOSS 312.994.5767 ademoss@bradfordallen.com
MATT WRIGHT 312.994.5663 mwright@bradfordallen.com
AMY ZELASCO 312.994.5680 azelasco@bradfordallen.com

EXCLUSIVE LEASING AGENT:

 **BRADFORD ALLEN** 