

MEATPACKING
DISTRICT

NEW YORK
NY

414 WEST 14TH STREET



SPACE DETAILS

LOCATION

South block between Ninth Avenue and Washington Street

APPROXIMATE SIZE

| | |
|--------------|----------|
| Ground Floor | 2,616 SF |
| Lower Level | 2,000 SF |
| Total | 4,616 SF |

FRONTAGE

25 FT on West 14th Street

TERM

Long term

POSSESSION

April 1, 2020

SITE STATUS

Currently Levi's

NEIGHBORS

Asics, lululemon athletica, Fjallraven, Patagonia, Apple, Starbucks Reserve, Columbia Sportswear, Restoration Hardware, Samsung, SoHo House, The Whitney Museum of American Art and The Standard Hotel

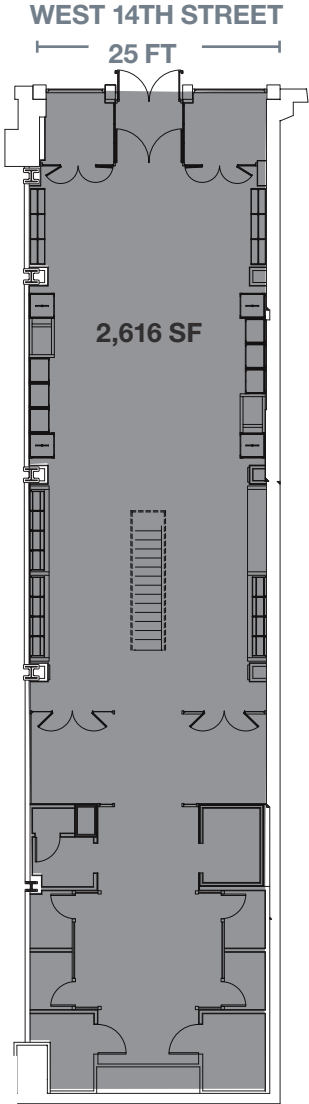
COMMENTS

Amazing branding opportunity in the heart of the Meatpacking District

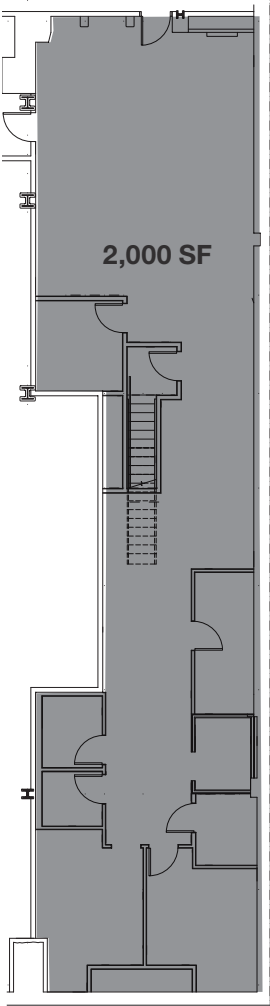
All uses considered; vent stack already in place

The Meatpacking District is home to a unique mix of experiential retailers, fine-dining establishments, world-class shopping, and strong office and residential demographics

GROUND FLOOR



LOWER LEVEL



AREA RETAIL



CONTACT
EXCLUSIVE
AGENT

MICHAEL PASTER
212.351.9345
michael.paster@ngkf.com



NGKF.COM

© 2020 NEWMARK KNIGHT FRANK RETAIL. The information contained herein has been obtained from sources deemed reliable but has not been verified and no guarantee, warranty or representation, either express or implied, is made with respect to such information. Terms of sale or lease and availability are subject to change or withdrawal without notice.