



# FOR LEASE

## CAPTAIN COUCH BUILDING

24-32 NW 2ND AVENUE  
PORTLAND, OR 97209

PLEASE CALL FOR RATES

JOSH BEAN  
[Josh@ECA-NW.com](mailto:Josh@ECA-NW.com)

BRIAN HANSON  
[Brian@ECA-NW.com](mailto:Brian@ECA-NW.com)

503.205.0610



ETHOS COMMERCIAL ADVISORS LLC | 2222 NE OREGON ST, SUITE 209 | PORTLAND, OR 97232

These marketing materials do not constitute an offer to sell or lease, and do not constitute or contain promises, representations or warranties of any kind. The information in these marketing materials may contain approximations and images for illustration purposes. The owner, broker and their agents assume no risk or liability for inaccuracies, errors or omissions in these marketing materials. The terms and conditions of any transaction with respect to the property shall be contained exclusively in a written purchase and sale agreement or lease between the owner and the purchaser or tenant. Prospective purchasers or tenants should perform their own inspections of the property to verify its condition, permitted uses, and all other characteristics.

LICENSED IN THE STATE OF OREGON



The Captain Couch Building was originally constructed as the Phillip Hotel in 1904, boasting ground floor retail and saloon space. The building was extensively remodeled in 1977 and renamed the Captain Couch Building in honor of Captain John Couch.

The building currently houses tech and creative office tenants in the bustling Old Town District.

## LOCATION

With the addition of tenants like Airbnb, neighborhood amenities in Old Town have blossomed in the past few years and continues to grow. Captain Couch has numerous nearby food, drink, and entertainment options, multiple modes of public transportation, and convenient parking.

Accessibility is key driver for successful businesses. Captain Couch is easily accessible by car and public transit. It is located adjacent to the Burnside Bridge and surrounded by twelve bus line and four streetcar lines.

## HIGHLIGHTS

- Exposed brick and wood finishes
- Historic architecture
- Landscaped courtyard
- Controlled access entry
- Public transit accessible – 12 bus and 4 streetcar lines
- Large windows and skylights in select suites

## Historic Architecture

Exposed brick and wood finishes

## Landscaped Courtyard

## Controlled Access Entry



Walk Score  
**98**



Transit Score  
**93**



Bike Score  
**99**

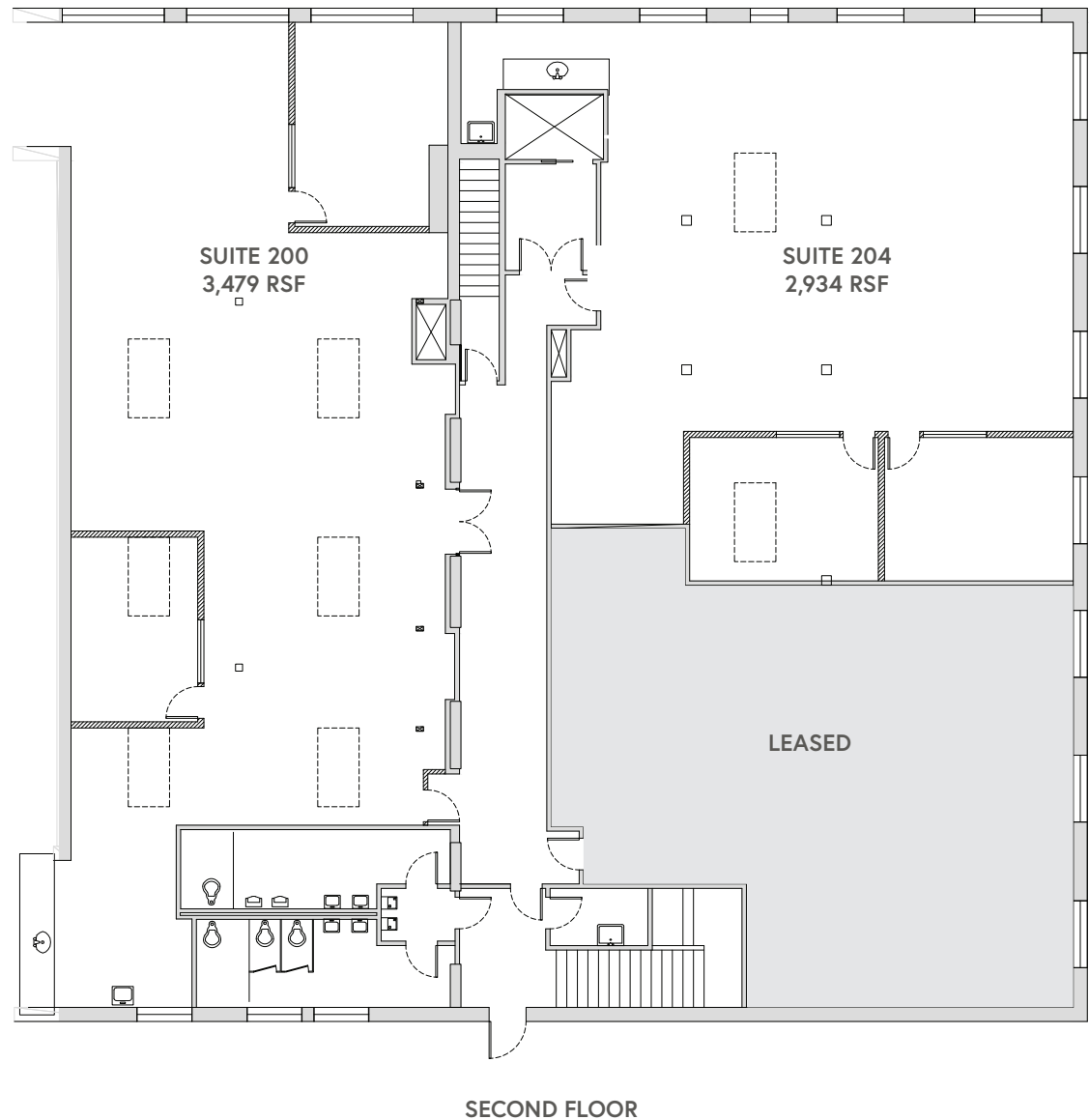


## CAPTAIN COUCH BUILDING

SUITE 200 | +/-3,479 RSF

SUITE 204 | +/-2,934 RSF

- Can be combined for +/-6,413 RSF
- Hardwood floors with exposed brick
- Multiple skylights and large windows with great natural light
- Each suite has its own kitchenette
- Generous ceiling height throughout (12')
- Connects to Norton House



THIS DRAWING IS NOT TO SCALE AND IS FOR ILLUSTRATIVE PURPOSES ONLY











● Restaurants

● Hotels

● Parking

--- MAX Lines

--- Bus Routes

--- Streetcar Lines

1. Floyd's Coffee

2. Angelina's Greek Gyros

3. Old Town Pizza & Brewing

4. Freddie Brown's Deli

5. Chen's Good Taste

6. Mi Mero Mole

7. Voodoo Donut

8. Dan & Louis Oyster Bar

9. Kell's Irish Restaurant & Pub

10. Pine Street Market

1. Embassy Suites by Hilton

2. Hi-Lo Hotel

3. Kimpton Hotel Monaco

4. The Nines

5. Marriott City Center

6. Kimpton Hotel Vintage

7. Hotel Lucia

8. The Benson

9. Courtyard by Marriott

10. The Society Hotel