



FOR LEASE

11130 SW Barbur Blvd

PORTLAND, OR



7,058 SF divisible to 1,558 SF

\$20,000 full service

3:1,000 parking ratio

SUITE 101 1,558 SF
- lobby exposure

SUITE 201 5,500 SF
- entire top floor
- to be newly carpeted

CONVENIENT location near I-5,
Hwy 217, Hwy 99

MINUTES to downtown Portland,
Lake Oswego and Beaverton

MONUMENT signage

ELEVATOR served

SHOWER in building

KEVIN JOSHI
503.221.2282
kevin.joshi@kidder.com

KIDDER.COM

This information supplied herein is from sources we deem reliable. It is provided without any representation, warranty, or guarantee, expressed or implied as to its accuracy. Prospective Buyer or Tenant should conduct an independent investigation and verification of all matters deemed to be material, including, but not limited to, statements of income and expenses. Consult your attorney, accountant, or other professional advisor.

**Kidder
Mathews**

FOR LEASE

11130 SW Barbur Blvd

PORTLAND, OR



SPACIOUS LOBBY



READY TO INSTALL NEW CARPET



MONUMENT SIGNAGE



THREE PARKING AREAS

KIDDER.COM

This information supplied herein is from sources we deem reliable. It is provided without any representation, warranty, or guarantee, expressed or implied as to its accuracy. Prospective Buyer or Tenant should conduct an independent investigation and verification of all matters deemed to be material, including, but not limited to, statements of income and expenses. Consult your attorney, accountant, or other professional advisor.

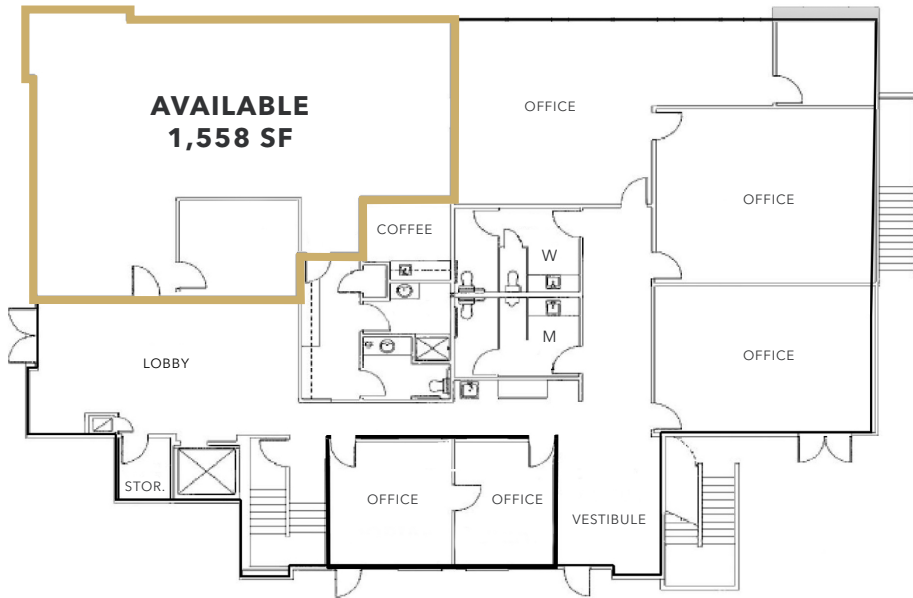
km Kidder Mathews

FOR LEASE

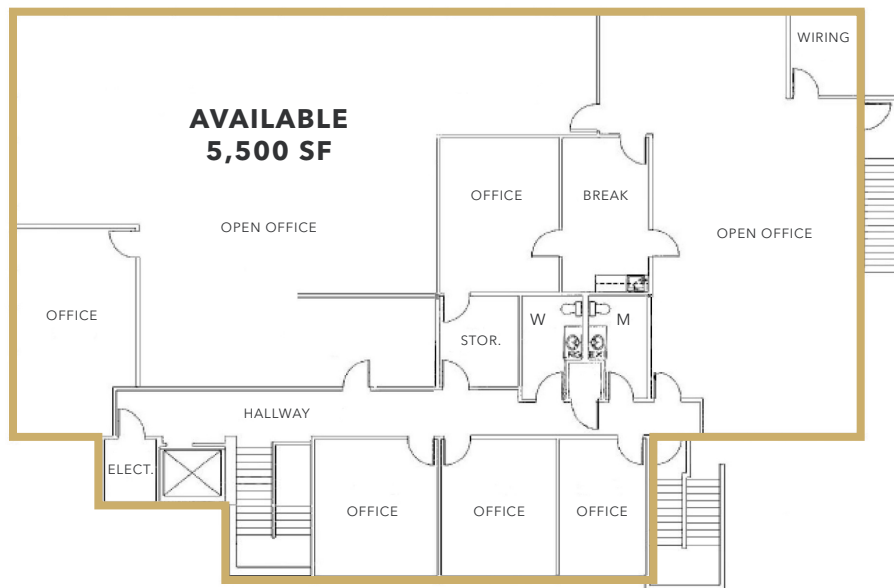
11130 SW Barbur Blvd

PORTLAND, OR

1st Floor - Suite 101



2nd Floor - Suite 201



KIDDER.COM

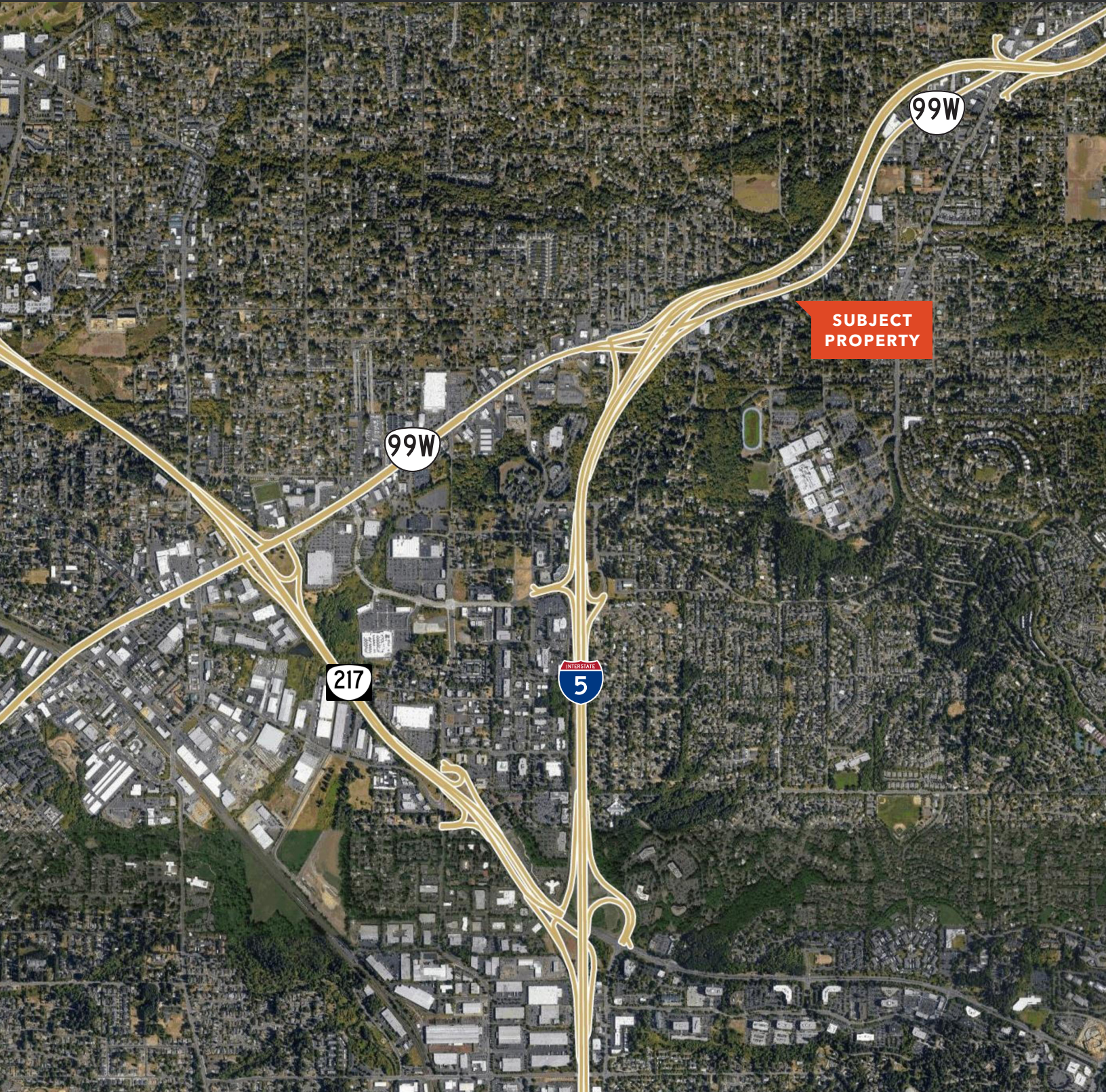
This information supplied herein is from sources we deem reliable. It is provided without any representation, warranty, or guarantee, expressed or implied as to its accuracy. Prospective Buyer or Tenant should conduct an independent investigation and verification of all matters deemed to be material, including, but not limited to, statements of income and expenses. Consult your attorney, accountant, or other professional advisor.



FOR LEASE

11130 SW Barbur Blvd

PORTLAND, OR



[KIDDER.COM](https://www.kidder.com)

This information supplied herein is from sources we deem reliable. It is provided without any representation, warranty, or guarantee, expressed or implied as to its accuracy. Prospective Buyer or Tenant should conduct an independent investigation and verification of all matters deemed to be material, including, but not limited to, statements of income and expenses. Consult your attorney, accountant, or other professional advisor.

 **Kidder
Mathews**