

**DRASTIC  
PRICE  
REDUCTION**



# FOR SALE +/- 15,252 SQFT OFFICE BUILDING



**2900 Palm Ave,  
Hialeah, FL 33012**

**MEDICAL OFFICE BUILDING / SELLER FINANCE**



- +/- 25 Parking Spaces
- Zoning C-2 / Corner Lot
- Shell Condition, Designer Ready
- Easy access to Hialeah Hospital, Palm Springs Hospital and Palmetto General Hospital
- Central Business District
- Cross street of Hialeah Park Casino
- Seller with share plans with new buyer

**+/- 15,252 SQFT**

**PRICE REDUCTION  
\$1,790,000**



**JOE PELAYO, CCIM, SIOR**  
TREC@JOEPELAYO.COM  
WWW.TRECFL.COM  
954.224.8773

**TREC** Total Real Estate  
Consultants Inc.  
www.trecfl.com

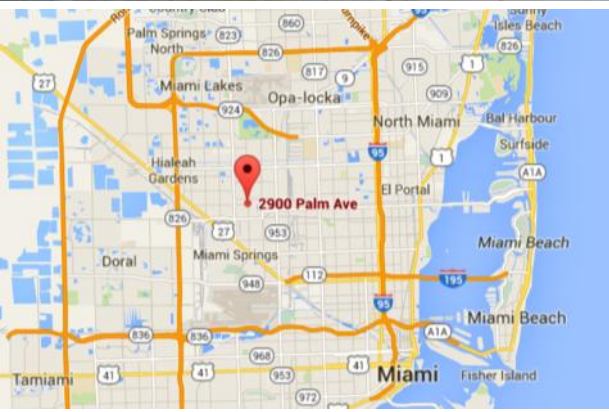
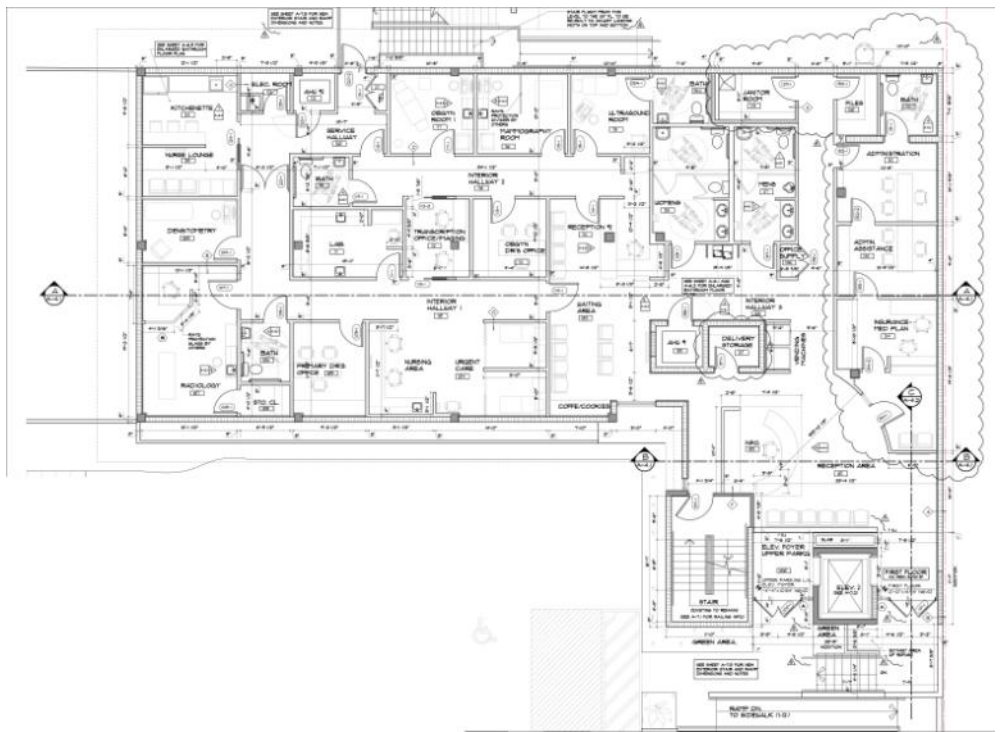
CoStar  
**POWER BROKER™ AWARD**  
Top Firm & Agent  
Ranked on sales & leasing transactions

NOTE: This offering subject to errors, omissions, prior sales or withdrawal without notice

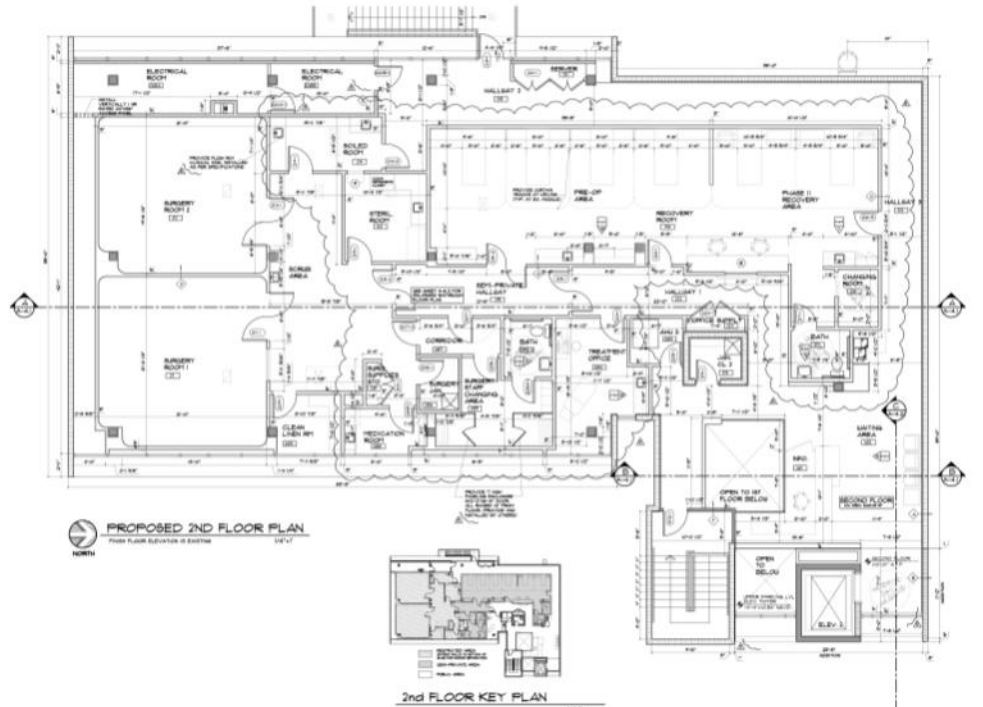


# 2900 Palm Ave, Hialeah, FL 33012 / PROJECTED PLANS

## First Floor ▶



## Second Floor ▶



**JOE PELAYO, CCIM, SIOR**  
TREC@JOEPELAYO.COM  
WWW.TRECFL.COM  
954.224.8773



NOTE: This offering subject to errors, omissions, prior sales or withdrawal without notice